

PARKVILLE



Parkville Area Chamber & EDC
ParkvillePACE.com



World-class expertise, right here at home

Our Mayo Clinic Care Network membership helps us see you and your healthcare needs in new ways.

With direct access to Mayo Clinic's expertise, you're not just treated — you're truly seen, understood and empowered. Close to home, at no additional cost.

Learn more at nkchealth.org/Together.



♥ OUR STORY

Since 2002, HPC Community Programs have housed the homeless while transforming lives, offering stability, support, and a clear path to independence for working families and teens, right here in the Northland.



GIVING BACK

Our Thrift Shops fund these services.



Picture Hills Thrift

6501 N. Cosby Ave. KCMO

Shop: Tu-F 10a-6p | Sat 10a-5p

 Hillcrest Thrift Shop - Picture Hills

816-505-0200

Platte City Thrift

1305 Branch St. Platte City, MO

Shop: M-F 10a-6p | Sat 10a-5p

 Hillcrest Thrift Shop - Platte City

816-858-7717



Thrift Outlet

6520 NW Prairie View Rd, KCMO

Shop: M-Thurs 10a-8p |

Fri 10a-6p | Sat 10a-5p

 Hillcrest Thrift Outlet

816-505-7963



Shop | Donate | Volunteer



CONTENTS

Welcome to Parkville.....6

Parkville in the Post-War Era.....8

Banneker School.....10

City of Parkville.....12

Platte County Parks & Trails.....16

City Government.....18

Community Organizations.....20

Recreation & Leisure.....22

Leaf Peeping.....24

Education & Schools.....26

Living in Parkville.....28

Events & Festivals.....30

Parkville Area Chamber & EDC.....31

2026 Board of Directors.....32

Chamber Sponsors.....33

Helpful Community Information.....34

Member List.....36



Parkville Area Chamber & EDC
8880 Clark Avenue, Parkville MO 64152
816.268.5003 | parkvillepace.com



Your Custom Publishing Partner
A Daily Herald Media Group Company
EMPLOYEE-OWNED

This is a Town Square Publications publication created and produced for the **Parkville Area Chamber & EDC.**

Copyright © 2026 Town Square Publications
P.O. Box 280, Arlington Heights, IL 60006
(847) 427-4905 | TownSquarePublications.com

Every effort has been made to ensure the accuracy of the information in this publication. The Chamber and Town Square assume no responsibility for misinformation. Please contact the Chamber with any additions or corrections. Reproduction in whole or in part without permission of the Chamber and Town Square is prohibited.

Chairman, CEO and Publisher | **Douglas K. Ray**
President and Chief Operating Officer | **Scott Stone**
Vice President / Director | **Scott Ray**
Director of Operations | **Joseph Nugara**
Director of National Sales | **Philip Hageman**
New Business Development Director | **Lori Urbaniec**
Production Director | **Darren Hinerman**
Production Manager | **Rebecca Anderson**
Sales Support Supervisor | **Tiffany Hogan**
Advertising Coordinator | **Angela Tuliao**
Sales Executive | **Josh Costly**
Project Manager/Design | **Sandy King**

Photos provided by | Dean Katerndahl,
Parkville Area Chamber & EDC, iStockphoto.com



#1 TRUSTED HEATING & COOLING COMPANY

Serving St. Joseph, Kansas City Northland & Surrounding Communities since 1991

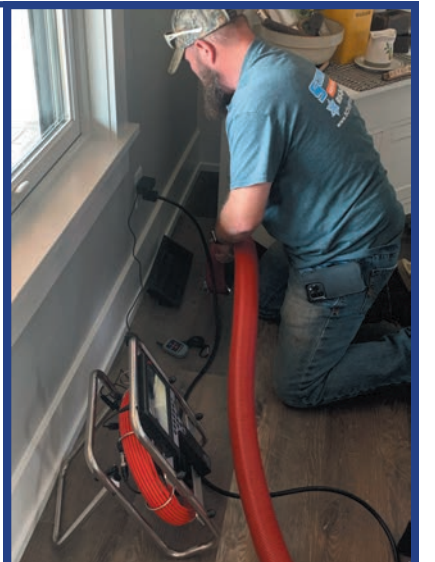


We Offer Heating & Cooling Services, Improving Indoor Air Quality, Installation of Ductless Mini Splits and Services on Water Heaters.

At Schomburg Heating & Cooling, we provide

- Furnace & Air Conditioner Installation
- Repair on **ALL** Brands
- Water Heater Replacement
- Bi-Annual Maintenance Checks
- Dryer Vent & Duct Cleaning

Protect your family from harmful allergens today!



Parkville Veterans Memorial



Ask us about our maintenance program

PARKVILLE

10903 NW Hwy 45 , Parkville, Mo 64152
816-431-4098



www.schomburgheatcool.com

WELCOME TO PARKVILLE!

For those seeking a natural setting, Parkville is nestled on the Missouri River just a few bluffs away from the Kansas City metropolitan area. In Parkville, connecting through community is a way of life. With a growing population and a nationally recognized education system, Parkville is the ideal city for businesses looking for an educated, well-trained workforce. This, combined with a high quality of life and business-

friendly government, adds up to a great place to live, work, learn, and play.

Over the years, Parkville has been named “Most Charming Community” by the Kansas City Star and Men’s Health Magazine, among others. It is regarded as one of the metropolitan areas most highly coveted places to reside.

The City of Parkville, where you are 10 minutes away from everything!

- Located about 10 miles northwest of downtown Kansas City, Missouri
- Kansas City International Airport is located approximately 10 miles north of Parkville
- Charles B Wheeler Downtown Airport approximately 9 miles southeast of Parkville
- Amtrak rail travel approximately 12 miles southeast of Parkville
- Near major interstates/highways, including I-29 (Hwy 71), I-435, and I-635, as well as Hwys 45 and 9 that meet in Parkville
- Just minutes away from several growing outdoor shopping and entertainment areas including Downtown Parkville, Creekside, Parkville Commons, Zona Rosa, Village at Briarcliff, The Village at Burlington Creek, and The Legends Outlets
- Downtown Parkville offers a variety of specialty shops, boutiques, restaurants, and a local Farmers’ Market
- Award-winning Park Hill School District
- Two Tom Watson World Class Golf Courses: The National Golf Club of Kansas City and The Deuce at the National
- Nature sanctuaries and beautiful parks with walking trails for everyone to enjoy
- Safe neighborhoods



METRO ROLL OFF CONTAINER SERVICES

Locally owned

Reliable. Local. Professional.

Serving the Greater Kansas City area since 2013, Metro Roll Off Container Services delivers dependable waste and sanitation solutions for construction sites, events, municipalities, and residential projects.

PORTABLE RESTROOMS

Metro Roll Off Container Services takes pride in delivering reliable sanitation solutions tailored to meet diverse needs. We provide an extensive range of rental options, including standard event units, ADA units, construction units and hand wash stations. Each portable toilet is cleaned and maintained, ensuring the highest standards of hygiene.

ROLL-OFF DUMPSTERS

15, 20, 30, and 40 yard containers for construction, demolition, roofing, and cleanup projects. Prompt delivery and pickup with flexible rental periods.



CALL TODAY: 816-809-1561

6225 NW Kelly Drive, Parkville, MO 64152
info@metrorolloffcontainer.com



DAVE'S FOREIGN CAR REPAIR



At Dave’s Foreign Car Repair, we feel serving you with honesty and integrity is more than just important - we really do go the extra mile to provide our customers with service and professionalism we hope they won’t soon forget. That’s why our customer satisfaction index is over 92% favorable.

Our service team is committed to keeping your car or truck in a safe, reliable condition and our team of dedicated mechanics are constantly updating their knowledge, skills, training and certifications.

HOURS: MON-THUR: 7AM-5:30PM - FRI. 7AM-5PM

6208 NW Bell Rd., Parkville, MO 64152 • 816-741-1498 • www.davesfcr.com



Below and right: The PACE Shake Rattle & Roll gala celebrated the people who support the Parkville community.

PARKVILLE

IN THE POST-WAR ERA: 1950-1960

The decade following World War II marked an important period of transition for Parkville, Missouri. While the community remained small in size, the 1950s helped establish the foundation for the vibrant and growing city residents know today.

In 1950, Parkville was home to just over 1,100 residents. Situated along the Missouri River just northwest of Kansas City, Missouri, the town maintained the character of a close-knit river community where education, agriculture, and small businesses formed the backbone of the local economy. Downtown storefronts along Main Street provided everyday goods and services, and neighbors regularly gathered in the city's small commercial district, reinforcing the strong sense of community that defined Parkville.

Parkville's location along the Missouri River had shaped its economy for generations. In earlier decades the river served as a major transportation corridor for agricultural products and trade, supporting mills, merchants, and river commerce. By the 1950s, highways and rail had largely replaced river transport, but the influence of that earlier commerce remained evident in the city's layout, businesses, and identity.

One of the most significant institutions in the community during this time was Park College, now known as Park University. The college had been part of the community since the late nineteenth century and continued to serve as an educational and cultural anchor. Students and faculty supported local businesses and

contributed to civic life, strengthening Parkville's reputation as a community where education and opportunity were closely connected.

Across the United States, the 1950s were marked by economic expansion and suburban growth. Returning veterans, new housing construction, and improvements in transportation reshaped communities across the country. The expanding economy of the greater Kansas City region began to influence surrounding towns, including Parkville.

Recognizing the importance of preparing for future growth, Parkville took a notable step in 1952 by expanding its municipal boundaries through annexation of land north of the original town site. At the time, the city limits covered only about half a square mile. This expansion allowed the city to accommodate new housing and infrastructure as the region continued to develop.

While the population remained relatively stable throughout the decade, the groundwork for future development was being laid. The combination of a strong educational institution, a stable local economy, and thoughtful planning helped position Parkville for the growth that would occur in the decades that followed. The 1950s ultimately served as a bridge between Parkville's historic river-town roots and its future as a thriving community within the Kansas City metropolitan region. The quiet progress of that decade preserved the city's character while preparing it for the opportunities ahead.



Urban Tree Specialists
Rooted in a Greener Future

Let Urban Tree Specialists Provide Your Tree Care Solutions!

Residential & Commercial Tree Care Solutions

- Tree & Shrub Pruning
- Tree & Stump Removal
- Cabling & Bracing
- Consultation
- Tree Preservation
- Insect & Disease Control
- Tree & Shrub Fertilization

816.214.8327 www.urbantreekc.com

KANSAS ARBORISTS ASSOCIATION MEMBER
NATIONAL TREE CARE ASSOCIATION MEMBER
INTERNATIONAL SOCIETY OF TREE CARE SPECIALISTS MEMBER
TREE CARE QUALITY ASSOCIATION MEMBER

WEBSITE

CHAR BAR
★ SMOKED MEATS & PICKLEBALL ★

Parkville's Go-To for KC BBQ Catering

From social events of all sizes, to corporate dinners that actually excite people, Char Bar Parkville delivers bold flavor and Midwest hospitality, so you can enjoy the party, too.

KANSAS CITY
4050 Pennsylvania Ave.
Kansas City, MO 64111
816.389.8600

PARKVILLE
15348 Old Town Drive
Parkville, MO 64152
816.622.9600

SCAN TO LEARN MORE OR VISIT US AT WWW.CHARBARBBQ.COM



BANNEKER SCHOOL

THE FIRST BLACK SCHOOL IN PLATTE COUNTY

Nestled just beyond the top of a hill on Main Street in **Parkville, MO** is a one-room school named Banneker School, the first Black school in Platte County. Access to this school is only from West Street which was the path taken by black children from southern Platte County.

Built in 1885 by students at Park College, it was replaced in the early 1900s by a two-room school built several blocks away.

Across the nation, schools have been named after Benjamin Banneker, a noted African American 18th Century scientist, mathematician, clockmaker, and astronomer. Parkville's Banneker School educated children from the area who were, by state law, prohibited from attending school with white children.

Although the Benjamin Banneker School in Parkville, built in 1885, is a brick building, an 1890s news article in the "Parkville Independent" indicates the modest level of its furnishings. "New seats are being placed in the primary room of the public school building. The old ones will be put in the colored school building, where benches have been heretofore used." The schoolhouse itself, is a simple rectangular, one-room building with a gable roof. On the interior, the blackboards are black paint on plaster (rather than slate). Fifty-eight students attended this school in 1898.

The construction of this school and a second Banneker School, built in 1903-04, was made possible by the interest and support of Park College, a Presbyterian school located in Parkville. Land for both buildings was acquired from Park College and the bricks for the 1885 schoolhouse were manufactured by Park College students.

Following desegregation, the original building fell into private hands. In the early 1980s, led by Mrs. Lucille Douglas, a former



Banneker teacher and long-time Parkville community leader, the property was purchased with the intent to preserve it. As such, it was deeded to the Platte County Historical and Genealogical Society.

Recognizing the school's potential as a site for unique hands-on history education for schoolchildren, efforts were made by former students and residents to work toward that goal. As the Banneker Restoration Committee, they succeeded in having the school designated on the National Register of Historic Places.

This distinction allowed them to apply for and receive a grant to stabilize the building and return it to its original configuration. Additional fundraising included the successful 1999-2002 'One Million Pennies' drive, a community service project of students at Union Chapel Elementary School. In 2008, to pursue the goal of restoration more actively and to raise the necessary funds, a 501(c)(3) non-profit organization was formed. The Banneker School Foundation of Parkville, Missouri now holds the deed to the nearly 130-year-old building. Recently recognized as one of Missouri's Top 10 Most Endangered Historic Places the need for restoration becomes more urgent with each passing year.

The Peanut
Food ♦ Cocktails
Since 1933

**6409 N. Cosby Ave.
Kansas City, MO 64151**

(816) 859-5005 | Peanutmidwest.com

Parkville's Hidden Creative Center

Local Arts Gift Shop

Pottery and Art Lessons

Membership Pottery Studio

5215 NW Crooked Road
ParkvilleArtHouse.com
ParkvilleArtHouse@gmail.com
816-651-4734

Get Creative on Crooked Road

BRACES BY BILLINGS

Look & Feel Your Best!

- Clear, Silver, & Gold Braces
- Invisalign
- Early Interceptive Treatment

PARKVILLE
LIBERTY
PLATTE CITY
KANSAS CITY
CAMERON

816.741.9007
Free Consultation



CITY OF PARKVILLE

Parkville continues to be recognized for its strong quality of life and as one of the top places to live in Missouri. The voter-approved one-half percent park sales tax increase has funded several new park projects that will also further enhance the city's trails, parks, and recreational facilities.

Developments, both residential and commercial, are popping up around Parkville, with the biggest boom in the Creekside area, located in western Parkville at I-435 and Hwy 45. In 2022, new residential projects were approved for Platte 38 and Village on the Green near The National and Nature Sanctuary at Riss Lake. Commercial projects, like Dairy Queen, Wells Bank, What-a-Burger, and Taco Bell, were also approved.

The City of Parkville provides many municipal services including parks, community development, police, public works, and municipal court. Parkville offers residents the comfort of a small town with the amenities of a much larger city.

PARKVILLE PARKS DEPARTMENT

Parkville is home to five parks, two nature sanctuaries, and miles of trails. English Landing Park and Platte Landing Park are central community hubs for jogging, biking, community performances, entertainment, dog parks, and a boat ramp for easy access to the Missouri River.

- English Landing Park**
 English Landing Park is a 68-acre facility with several amenities, including three miles of walking trails, a certified 5k/10k course, a large playground area, picnic shelters, two stages, sand volleyball courts, ball fields, pickleball courts, and a disc golf course. The park, with its scenic walking trails that parallel the winding Missouri River, is like none other in the metro area. English Landing Park attracts a wide variety of users from bicyclists to walking or running enthusiasts – there is a recreation outlet for all to enjoy.
- Platte Landing Park**
 Platte Landing Park is a 140-acre park located adjacent to English Landing Park on the Missouri River and includes two miles of trails, off-leash areas for dogs (one area for large dogs and one area for smaller dogs), and a boat ramp into the main channel of the Missouri River. The park is owned by the city and is open 5 am-midnight. Shade structures at the dog parks provide refuge during hot summer days and inclement weather.
- Pocket Park**
 Located in the downtown historic district, Pocket Park is a central gathering location. The unique downtown ambiance has a magnetic draw to all those who may happen to pass by. The park includes a tiered garden, a small stage area, benches, a terrace, and an engraved brick garden. In 2022, the city made improvements to the frontage of the park including bollards for safety and planters for aesthetics. The Grigsby statue is relocated to a new location in the upper terrace. Additional improvements will be completed as funding becomes available.



- Watkins Park**
 Watkins Park is one of the city's two neighborhood parks, located just a few blocks from Main Street at the intersection of West and 10th Street. The first phase of the Watkins Park Master Plan was completed in 2022 that includes upgrades to the parking lot, fencing, stream bank, loop trail. A new shelter and playground equipment were also added to the park. The second and final phase will be completed as funding becomes available.
- Adams Park**
 Adams Park is a small neighborhood park located just off Main Street at the intersection of 13th and Walnut Street. Adams Park will receive improvements in the future which will include a loop trail, fencing, playground, new parking area, and shelter work.



- Parkville Nature Sanctuary**
ParkvilleMo.gov/departments/nature-sanctuary
 The Parkville Nature Sanctuary is a wildlife preserve and educational site developed and maintained by the City of Parkville with the help of a group of extraordinary volunteers. The Parkville Nature Sanctuary is a 115-acre natural outdoor area made accessible by nearly three miles of hiking trails. A shelter known as the Girl Scout Cabin can be reserved in three-hour increments in the Nature Sanctuary. The main entrance of the Parkville Nature Sanctuary is located below the Platte County Health Department at 12th Street and Highway 9 and is open from dawn to dusk. There is no vehicle access or utilities available at the shelter.

Several events are held at the Parkville Nature Sanctuary every year. The most popular event is Ghost Stories – an event held around Halloween where visitors can listen to spooky stories and music in front of a fireplace, walk a haunted trail or a pumpkin-lined trail and make s'mores. The pumpkins that line the trail are carved by volunteers at a pumpkin carving event held the Thursday before Ghost Stories. In the summer, kids between the ages of 6 and 13 are invited to hike the trails and along the creeks, make bird feeders and enjoy archery. In December, Winter Wonderland is free outdoor, hands-on learning event for families of all ages where participants make wildlife-themed crafts, sip hot cocoa and take a holiday-themed hike through the sanctuary to see Santa!

Daily operations of the Parkville Nature Sanctuary are overseen by Director, Brittanie Propes, and Assistant Director, Wayne Frazier. If you have questions about the Parkville Nature Sanctuary, email Director Brittanie Propes at bpropes@parkvillemo.gov.

- Sullivan Nature Sanctuary**
parkvillemo.gov/nature-sanctuary/sullivan-nature-sanctuary
 The Sullivan Nature Sanctuary is 7.63 acres and is located on the north side of Platte Landing Park along Rush Creek, west of the bridge entry. Because of its proximity to the riverfront parks, dogs are allowed in the Sullivan Nature Sanctuary. The land, donated by members of the Sullivan family, includes acreage that is reserved for future parkland.
- Parkville Farmers' Market**
parkvillefarmersmarket.com/
 The Parkville Farmers' Market, operated by the Parkville Farmers Market Association, is a friendly grower-verified market located downtown outside English Landing Park. It has a wide selection of locally grown and produced assorted fruits and vegetables, meats, farm fresh eggs, local honey and honey by-products, jams and jellies, homemade baked breads and sweet treats, plants and cut flowers, herbs, mushrooms and more. The Farmers' Market is open from 7 a.m. to noon on Saturdays (April-October) and from noon to 4 p.m. on Wednesdays (June-September). The season begins in late April and ends in late October.





PARKVILLE EVENTS

parkvillemo.gov/guidelines-events-parkville

Parkville has numerous partnerships with organizations who take advantage of our city parks, nature Sanctuary, and associated shelters and grounds. Your organization can also enjoy your next professional or personal event by contacting the City of Parkville Parks and Recreation Director, Brittanie Propes, at bpropes@parkvillemo.gov. To find out more about planning your event in Parkville, visit the city's website.

- **Parkville Days**

One of downtown Parkville's largest festivals, **Parkville Days**, features a variety of family-friendly entertainment beginning with a parade which is hosted by the Main Street Parkville Association. Bring your lawn chairs and enjoy live music along the Missouri River and on Main Street. The Evans Midland Empire Carnival is open all weekend, starting Friday. Browse and enjoy arts & crafts, retail, food, and specialty booths. Participating downtown shops will host their "end of summer" sales and specials... and much more!

- **Christmas on the River**

Another event hosted by the Main Street Parkville Association is **Parkville's** annual celebration of the holiday season with Christmas on the River that is held the 1st Friday in December. Enjoy holiday entertainment, take photos with Santa Claus and holiday characters, kid's activities, hayrides through English Landing Park and a holiday firework show.

- **4th of July Celebration**

Parkville's traditional salute to Independence Day is hosted by the Main Street Parkville Association. The event includes a pancake breakfast, community parade, food, fun, shopping, kid's activities, a skydiving exhibition, and a fireworks finale.

- **Cruise Nights**

Parkville Cruise Nights, hosted by the Main Street Parkville Association, are held in historic downtown Parkville. Hang out with friends at the classic car show, listen to music and check out all the cars, while also exploring downtown Parkville. Come early to enjoy shopping at Parkville's unique stores and dine at your favorite local restaurant – all within walking distance.

CITY-WIDE WASTE DISPOSAL AND RECYCLING OPPORTUNITIES

parkvillemo.gov/residents/recycling-waste-disposal

Parkville residents have several options to recycle and get rid of unwanted materials, yard waste, household hazardous waste and other materials at events throughout the year. More information about all the events is available on the city's website at.

- **Electronics Recycling**

On the first Saturday of every even month, starting in February and going until October, anyone can recycle electronics, which essentially includes everything that has a cord or battery (working or not). Most items are free, but there are charges to recycle certain electronics so be sure to check the city's website for specifics.

- **Paper Shredding**

In conjunction with the electronics recycling events, Parkville residents can drop off paper that will be securely shredded on-site.

- **Cleanup Events**

The city holds two cleanup events annually, one in the spring and one in the fall, for Parkville residents only. Items collected include small limbs, leaves, and grass, used batteries, scrap metal, water heaters, auto parts, metal products, air conditioners without compressor, washers and dryers without motor, tires, furniture, and other household debris.

- **Curbside Events**

Every year in October, the city will pick up, at curbside, such items as yard waste and household debris for residents in Parkville. Only items that can be carried by one person are accepted.

- **Household Hazardous Waste Collection**

www.recyclespot.org/HHW.aspx

Parkville is a member of the Regional Household Hazardous Waste Collection Program (HHW). Residents have year-round access* to the safe disposal of unwanted products such as paint, lawn and garden chemicals, automotive fluids, batteries, florescent bulbs, and house cleaners. Business waste is not accepted.

*This is year-round access due to the ability of Parkville residents to utilize locations that participate in the annual HHW program. This listing can be found on the Mid-America Regional Council's website.

- **Yard Waste Drop Off**

For 4-6 weeks in the spring and fall, Parkville residents may drop off yard waste at no charge at 6305 NW River Park Drive, Riverside. Yard waste does not have to be bagged and proof of residency is required.



PARKVILLE POLICE DEPARTMENT

parkvillemo.gov/departments/police-dept/police-services/community-assistance-fund

The Parkville Police Department personifies servant leadership in the Parkville community. The quality of community relationships between citizens and individuals of the Police Department represents a high degree of positive engagement, communications, and involvement within Parkville. They continually strive to build relationships within our city, region, and state. Under Chief Kevin L. Chrisman's leadership, his team promotes a sense of group connection where members are encouraged to interact with citizens – maintaining focus on the importance of collaboration and visibility in the community. This natural approach to personal interactions between police officers and community members builds mutual trust – essential to addressing any existing or future problems.

There are numerous programs within the city where the Police Department makes great effort to reach citizens of all ages. For example, in 2010, Chief Chrisman and his team started the Parkville Police Community Assistance Fund (PPCAF) to assist children and families in need during the holiday season. Over the years, several programs have been implemented and many people in need have benefited from the fund. Some of the regular programs include Back to School, in which children are provided backpacks, school supplies, clothing and food, as needed; Park Village Apartments senior holiday luncheon; and the largest program is Shop with a Cop always held in December.

These programs are possible due to the many generous donors that support these worthwhile efforts, year-in and year-out. To learn more about the PPCAF please visit the city's website.



PUBLIC WORKS

Public Works Department oversees public wastewater and storm water services for most of the city. This department includes two divisions: Operations (Streets) and Wastewater. For the remaining services, including fire protection, ambulance, water, gas and electric, the city partners with the Southern Platte Fire Protection District, Missouri American Water, Spire, and Evergy.

The **Streets** division of Public Works is responsible for maintaining a growing network of approximately 85 lane miles of pavement, rights-of-way, sidewalks, and storm drains. Potholes, pavement cracks, mowing, storm sewer repairs, and snow removal are only some of their responsibilities.

Sewer operations is responsible for maintenance of the wastewater treatment plant, six pump stations and sewer collection system. The Sewer Fund is an enterprise fund used to operate and maintain the city's sewer service system. It is funded by the revenue collected from charges on customers using the service.

CODE ENFORCEMENT

Code enforcement is one of the responsibilities of the Community Development Department. It is a shared responsibility of all residents, property owners, and city Government. They enforce the Property Maintenance Code to ensure that the city preserves its safety, welfare, and appearance



PLATTE COUNTY PARKS & TRAILS



Parks

- 1 Edgerton City Parks
City of Edgerton Partnership (9.5 Ac)
- 2 Dean Park
City of Dearborn Partnership (26 Ac)
- 3 Camden Point City Park
City of Camden Point Partnership (10 Ac)
- 4 Platte Ridge Park
(215 Ac)
- 5 Weston Bend State Park
Managed by Missouri State Parks (1133 Ac)
- 6 Parma Woods
Operated by MDC (265 Ac)
- 7 Mark McHenry Park
Owned by KCMO (838.46 Ac)
- 8 Tiffany Hills Park
Owned by KCMO, Operated in partnership with NSA
- 9 Platte Purchase Park
KCMO Parks (140 Ac)
- 10 Barry Platte Park
(18 Ac)
- 11 Frank Vaydik Park
KCMO Parks (144.74 Ac)
- 12 Platte Landing Park (140 Ac)
English Landing Park (68 Ac)
Parkville Nature Sanctuary (115 Ac)
City of Parkville
- 13 Michael Gunn Park at Platte Meadows
(114 Ac)
- 14 Green Hills of Platte Wildlife Preserve
(45 Ac)
- 15 EH Young Riverfront Park
City of Riverside (40 Ac)

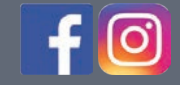
Trails

- Proposed Trails
- Completed Trails
- Trailheads

Community Centers & Aquatics

- 1 Platte County Community Center North
operated by YMCA, 3101 Running Horse Rd, Platte City
- 2 Platte County Community Center South
operated by YMCA, 8875 Clark Avenue, Parkville
- 3 Springs Aquatics Center at Tiffany Hills Park
operated by KCMO Parks, 9400 N. Congress Ave., Kansas City

Follow Platte County Parks



816-858-3419
www.platteparks.com

CITY GOVERNMENT



The City of **Parkville** is governed by a Board of Aldermen of eight who represent four wards, and a mayor. **Parkville's** new mayor, Mayor Dean Katerndahl, was elected in 2022; he was re-elected to a second three-year term in 2025.

CITY APPOINTED BOARDS AND COMMISSIONS

Board of Appeals

The Board of Appeals considers applications for appeal where it is alleged that the:

- True intent of the adopted Property Maintenance Code or its rules have been incorrectly interpreted
- Provisions of the Property Maintenance Code do not fully apply; and
- Requirements of the Property Maintenance Code are satisfied by other means

The Board consists of the members of the Board of Zoning Adjustment.

Board of Zoning Adjustment

The Board of Zoning Adjustment (BZA) is authorized in accordance with Sections 89.010 to 89.140, RSMo, 1959, and the City of **Parkville** Municipal Code to hear and act on:

- Appeals of decisions made by staff in enforcement of Zoning Code Variances that would not be contrary to public interests and in cases in which literal enforcement of code would result in unnecessary hardship
- Special exceptions; and
- Other considerations as may be authorized by the Board of Aldermen through ordinance

Members are appointed by the Board of Aldermen and serve staggered five-year terms. Officers are elected annually by the

members of the Board. Alternates are appointed by the Board of Aldermen, confirmed annually, serve only in the absence of an appointed member, and have no term limit.

Community Land & Recreation Board

Pursuant to **Parkville** Municipal Code Chapter 150, the Community Land and Recreation Board (CLARB) acts in an advisory capacity to study trees and shrubs along streets and in other public areas; review matters of park planning, or other issues brought before the Board of Aldermen; and make recommendations regarding public neighborhood beautification project requests, event approvals occurring on community public right-of-way and park land, and procedures for carrying out such events. The mission is to develop and maintain community lands and public recreational facilities and opportunities for today and the future.

CLARB consists of nine members who serve staggered, three-year terms.

Diversity & Inclusion Commission

Pursuant to **Parkville** Municipal Code Chapter 154, the **Parkville** Diversity and Inclusion Commission acts in an advisory capacity to provide special insight into matters of equity, diversity and inclusion and to provide a foundation for open and respectful dialogue. The Commission makes recommendations to the Mayor and Board of Alderman to:

- promote community awareness and education on the value of diversity to the community
- promote equity based on economic status, race, color, religion, gender, national origin, ancestry, marital status, physical or mental disability, familial status, sexual orientation, and gender identity
- evaluate and develop actionable equity recommendations

to be used to examine and strengthen policies, practices, services, and programs

- promote responsiveness of government to concerns of people that may be subject to bias or discrimination in the community
- encourage the creation and continuation of community equity, diversity and inclusion awareness efforts, programs and activities that are available and accessible to all community members; and
- address ad hoc requests related to diversity and inclusion from the Mayor and Board of Aldermen

The Commission consists of eight members who serve staggered, three-year terms and one non-voting representative from Park University that serves during the academic year.

Municipal Officials' Ethics Commission

The Municipal Officials Ethics Commission is governed by **Parkville** Municipal Code Chapter 107 and has the power and duty to render advisory opinions to the Board of Aldermen in all ethics complaints.

It consists of five members who serve staggered, five-year terms. The mayor appoints a member who serves as the Chairperson. The four remaining members are appointed by the Board of Aldermen and represent one of each of the four wards. The Commission meets when a complaint is filed with the city.

Planning & Zoning Commission

The Planning & Zoning Commission is responsible for all duties and functions provided for in the Municipal Code of the City of **Parkville** and Chapter 89 of the State Statutes (RSMo). These duties include:

- Review and make recommendations on zoning, development plans and subdivision plats

- Zoning and subdivision text amendments
- Adoption, periodic review, and update of the City's Master Plan; and
- Other related planning and zoning activities

Tax Increment Financing (TIF) Commission

Missouri's TIF Act defines a "Municipality" as an incorporated city, town, village, or county. The governing body of **Parkville** is required to establish a TIF Commission. The municipality is also responsible for the approval of ordinances (or resolutions if a county) that establish a comprehensive Redevelopment Plan and for approval of the specific TIF Redevelopment Project. Responsibilities of the TIF Commission are many and may include working with the local government in creating the Redevelopment Plan and TIF Redevelopment Project parameters, holding required public hearings, preparing economic impact reports and revenue projections, blight studies and other documents to justify the need for TIF and as required by state statutes governing Local TIF projects.

The idea behind local TIF is the assumption that property and/or local sales taxes (depending upon the type of redevelopment project) will increase in the designated area after redevelopment, and a portion of the increase of these taxes collected in the future (up to 23 years) may be allocated by your municipality to help pay certain project costs. The use of TIF is helping dozens of Missouri communities thrive by creating new and better jobs while increasing tax revenue streams from formerly non-productive, unattractive, and substandard areas. TIF benefits redevelopment in the urban core areas of our largest metropolitan cities, as well as in smaller Missouri communities, wherever the need exists.

The TIF Commission consists of eleven total members, with six appointed by the mayor with the consent of the Board of Aldermen, two members appointed by the school board whose district is in the boundary of the redevelopment area, two members appointed by the chief elected officer of Platte County with the consent of the Platte County Commission, and one member appointed by the affected taxing district. The mayor's appointments serve staggered, four-year terms.

Parkville
Missouri

MAYOR & BOARD OF ALDERMEN

Mayor: Dean Katerndahl

Ward 1 Aldermen Philip Wassmer Tina Welch	Ward 3 Aldermen Douglas Wylie Stephen Melton
Ward 2 Aldermen Brian T. Whitley Mark A. Hill	Ward 4 Aldermen Abby LackKamp Evan Maxon

COMMUNITY ORGANIZATIONS

PARKVILLE AREA CHAMBER & EDC (PACE) Story of Working Together

Parkville, Missouri, is home to over 8,000 residents, 350 businesses, and a significant number of visitors. It is a community



that has stood the test of time by working together toward a common purpose: creating a high-quality community where it is safe to raise a family, access excellent education, and enjoy time with friends. Whether spending time outdoors in our beautiful parks or enjoying great food and drink with friends, Parkville truly has it all.

In 2023, the Parkville Chamber of Commerce and the Parkville EDC made a strategic decision to merge, uniting two award-winning organizations to provide members with additional opportunities to enhance our community. Over the past several years, we have made significant strides in improving the membership experience and offering high-quality networking opportunities to all members. We've built strong partnerships and friendships that bring Parkville and the surrounding community together.

PACE (Parkville Area Chamber and Economic Development Council) is a 501(c)(6) nonprofit organization that supports local businesses while advancing their collective interests. Our mission is to improve the business environment, encourage responsible economic growth, and create a positive community impact. PACE achieves this through various programming efforts, including:

- Networking events
- Educational luncheons
- The Economic Summit
- Ribbon cuttings and marketing support
- Building partnerships
- Engaging with developers to foster high-quality, needed development
- Marketing the community to attract development and highlight member offerings
- Legislative forums
- Major community events
- Community Calendar
- Providing a platform for discussion among members

Parkville is known for its exceptional schools and thriving business community, making it one of Kansas City's most sought-after areas. PACE is committed to understanding the needs of its members and the community to better serve Parkville's future. We also welcome new businesses by introducing them to our vibrant network of existing members.

PLATTE COUNTY COMMUNITY CENTER SOUTH - PARKVILLE

[KansascityYMCA.org/locations/platte-county-south](https://kansascityymca.org/locations/platte-county-south)



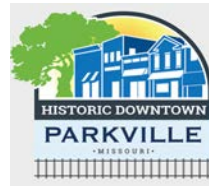
Platte County Community Center South, located in **Parkville**, is currently the largest center in the Kansas City metro area, serving over 10,000 individuals. Membership at the center includes access to all

Kansas City metro YMCAs.

The center features a wellness center, a full indoor gym, a one-eighth-mile suspended walking track, and an indoor aquatics center featuring three lap lanes, a lazy river, a vortex, dry sauna, steam room, kids adventure center, indoor & outdoor playground areas, a generational center, party room, and locker rooms. Platte County Community Center South also hosts several community events, including a summer Block Party, Boo Bash, Kids' Night Out, and Cookies with Santa in December.

MAIN STREET PARKVILLE ASSOCIATION

[@MainStreetParkville](https://ParkvilleMo.org)



Main Street **Parkville** Association (MSPA) is a non-profit 501(c)3 organization dedicated to the preservation, continued revitalization, and promotion of Historic Downtown **Parkville**. Based on national and state Main Street guidelines, the focus of MSPA on behalf of the downtown district is:

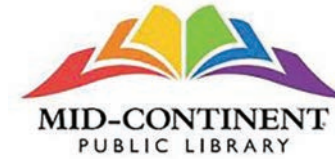
- design & beautification
- organization (partnerships, sponsorships, and volunteerism)
- economic vitality of the district
- events and festivals
- marketing promotions

The mission of the Main Street **Parkville** Association is to preserve, maintain, and promote the hometown charm of Historic Downtown **Parkville**. MSPA hosts many community events throughout the year, including **Parkville** 4th of July Celebration, **Parkville** Days Festival, and Christmas on the River. They also host **Parkville** Microbrew Fest (their annual fundraiser), **Parkville** Cruise Nights, Small Business Saturday Passport event, Downtown Trick-or-Treat and many other promotional events.

MSPA is guided by an Executive Director and a volunteer Steering Committee. Leadership of the Steering Committee includes the Chair, Vice Chair, Secretary, Treasurer, and Standing Committee Chairs. You can get involved with MSPA by being a member, sponsor, investor, or volunteer. Visit parkvillemo.org to learn about these opportunities, what's happening in the downtown district, and for a complete directory of our local small businesses.

MID-CONTINENT PUBLIC LIBRARY – PARKVILLE BRANCH

MyMCPL.org/locations/Parkville



Located in Platte County, northeast of Kansas City in historic **Parkville**, Missouri, Mid-Continent Public Library's **Parkville** Branch

serves the local community. This branch (previously the Platte Woods Branch) opened in 1992 and offers customers a wide array of free resources and services—from free books, movies, and music, available in both physical and streaming formats, to public computers and high-speed Wi-Fi.

All MCPL branches offer free access to many online resources, including digital versions of popular publications such as the Kansas City Star. The **Parkville** Branch offers passport processing services (for new passports), is equipped with free co-working space, including a community room for larger gatherings and a community room available to rent for a nominal fee. Free programs on a variety of topics are consistently offered for all ages at the **Parkville** Branch, including early literacy story times, book groups, entertainment, exercise classes, and more.

FRIENDS OF PARKVILLE ANIMAL SHELTER

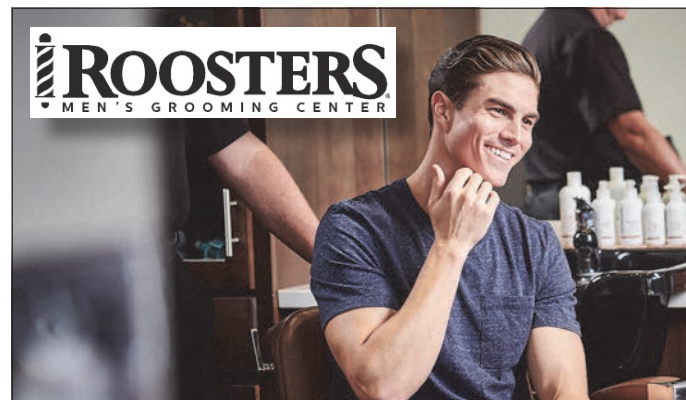
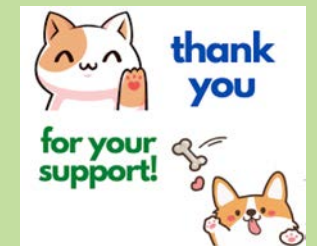
ParkvilleShelter.com

Parkville is home to a true Northland treasure in Friends of **Parkville** Animal Shelter (FOPAS). Founded in 1999 by a group of concerned citizens, FOPAS's primary mission is to provide care and find permanent homes for the abandoned and stray animals in their care, primarily accomplished through the generosity of volunteers and donors. FOPAS is a no kill animal shelter almost exclusively run by dedicated volunteers who work tirelessly to change the lives of area strays.

FOPAS believes the entire community benefits from the compassion and humanity shown in caring for animals who have been discarded. Animals cannot speak for themselves, so FOPAS speaks and acts for them. FOPAS is a 501(c)(3) organization.



FRIENDS OF PARKVILLE ANIMAL SHELTER



The Classic Barbershop

Roosters Men's Grooming Center provides an authentic barbershop experience in a modern and upscale environment. Our focus is on delivering consistent, exceptional service, and providing guests an escape from their busy lives. Come visit us today!

9008 NW Highway 45, Parkville, MO 64152
(816) 673-1091 | roostersmgc.com

PRIORITIZE WELLNESS

IN THE NEW YEAR!

DON'T LET ACES OR DISCOMFORT HOLD YOU BACK!

Stretch Zone's certified practitioners use our patented strapping system, ensuring you get the best stretch to start feeling better sooner. Improve your mobility & flexibility in 2025...we do all the work, you get all the benefits.

\$85 FREE

FIRST \$85 STRETCH IS ON US!
LIMITED TIME ONLY!

SIX CONVENIENT LOCATIONS TO SERVE YOU!

BROOKSIDE | LEE'S SUMMIT | LENEXA
OVERLAND PARK | PARKVILLE | PRAIRIE VILLAGE

BOOK NOW

RECREATION & LEISURE



CREEKSIDE

CreeksideParkville.com

Growth That Is Good for Parkville

The Creekside Development continues to make important contributions to the sustainable growth of **Parkville**, creating significant opportunity for the city now and in the future. The project includes residential, mixed-use residential, commercial, and industrial developments on nearly 300 acres of desirable land at the intersection of Interstate 435 and Missouri Highway 45. Currently, there is \$200 million worth of investment in place as the development continues to build out and benefit **Parkville**, surrounding communities, and nearly a million annual visitors.

The Creekside Development project is committed to moving **Parkville** on a positive path forward for generations to come. The development is founded on a smart, thoughtful, and comprehensive vision and helps fulfill the city's Master Plan. Creekside positions **Parkville** as the preeminent place to live, work, eat, shop, play, and visit – not only in Kansas City's Northland and the metro area, but across the Midwest. We are bringing this area to life!

Project Features

The project development will ultimately feature:

- 148 single-family homes
- 272 townhomes
- 416 apartments
- 184,700 square feet of restaurant and retail space
- 38,000 square feet of public green space with walking trails
- Six tournament-quality youth baseball fields
- Four hotels
- A 50-acre industrial park

Creekside has been intentionally configured to include five distinct sections with a focus on providing both residents and visitors with first-rate amenities:

- **Creekside Commons** on the northwest corner includes three hotels, retail, and restaurant space plus apartments, office space and the baseball complex.
- **The Meadows at Creekside** on the southeast corner includes single-family homes, townhomes, and apartments.
- **Old Town at Creekside** on the southeast corner includes a hotel, apartments, retail, and restaurant space, as well as public green space.
- **The Woods at Creekside/Creekside Village** on the northwest corner includes single-family homes and townhomes.
- **Creekside Industrial** on the southwest corner includes 50 developable acres.

THE NATIONAL GOLF CLUB OF KANSAS CITY

TheNationalGolfClub.com

The National Golf Club of Kansas City, recognized as one of the finest private country clubs in the Midwest, is in the affluent Kansas City, MO suburb of **Parkville**. The 36-hole golf club consists of the award-winning Tom Watson-designed "The National", its beautiful counterpart known as "The Deuce", and outstanding racquet ball, fitness, and pool facilities. This exclusive private club provides multiple tiers of membership, as well as the ideal setting for a limited number of corporate or charity golf tournaments, private events, meetings, and weddings in a wondrous indoor or outdoor setting.



PARKVILLE COMMONS

ParkvilleCommons.com

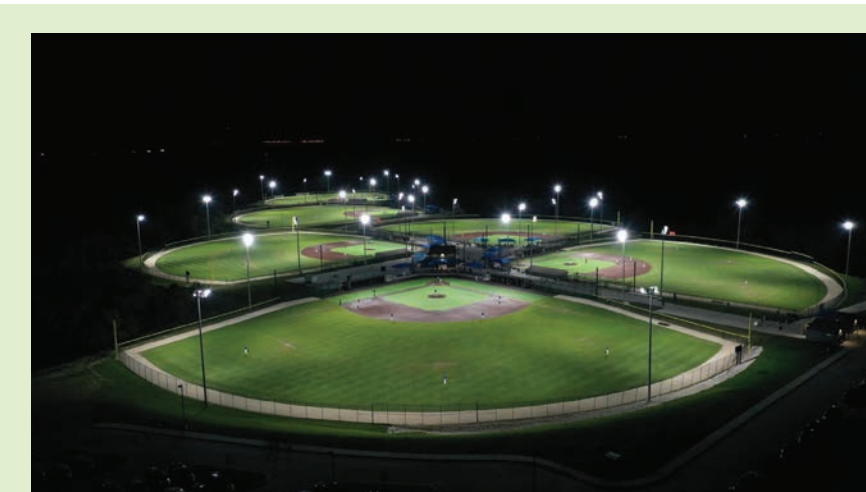
Parkville Commons is a retail center located in **Parkville's** core retail corridor with excellent high traffic generators and affluent demographics. The center includes 130,000 square feet located at the intersection of Hwys 45 and 9, and houses an excellent merchandising mix with a variety of locally owned businesses. A few of **Parkville Commons'** highly recognized tenants include Acre Restaurant, Price Chopper, Nick and Jake's, Twill., Cycle City, YMCA, and is the home of the **Parkville Area Chamber** office. Gather at **Parkville Commons** to shop local, dine, get fit, and play.



BASEBALL FIELDS

Creekside's state-of-the-art baseball complex features six innovatively designed competitive baseball fields, which utilize turf infields and pristine, natural grass outfields. All fields have adjustable base paths and fencing to accommodate play for any age group or ability level, as well as softball. The baseball complex brings first-class traveling youth baseball clubs and their families from all over the country to **Parkville** for multiple-day trips.

The baseball fields were modeled after a development in Westfield, Indiana, called Grand Park Sports Campus, and response to the new complex has been overwhelmingly positive. Creekside draws in about a million visitors per year with much of that traffic related to competitive tournaments and events held on-site.



LEAF PEEPING



Parkville is consistently recognized as a prime destination for beautiful fall foliage.



Scan the QR code to read more.



Parkville
Pediatric Dentistry, LLC

Let our family take care of your family!



Dr. Rachael Graue
Board Certified
Pediatric Dentist



Dr. J. Reese Graue

6004 N.W. 9 Hwy, Parkville, Missouri 64152
(816) 746-KIDS (5437)
www.parkvillepediatricdentistry.com



Unlock an unforgettable dining experience

(816) 716-1097

12 East 1st Street, Parkville, MO 64152
www.primaparkville.com



EQUIPMENT RENTAL, SALES & SERVICE
You're Hometown Rental Equipment Specialists

Propane Sales, STIHL Power Equipment Dealer,
Commercial Lawn Mower Sales & Service



6304 NW Bell Rd, Parkville, MO
816-741-4900 | www.platterental.net



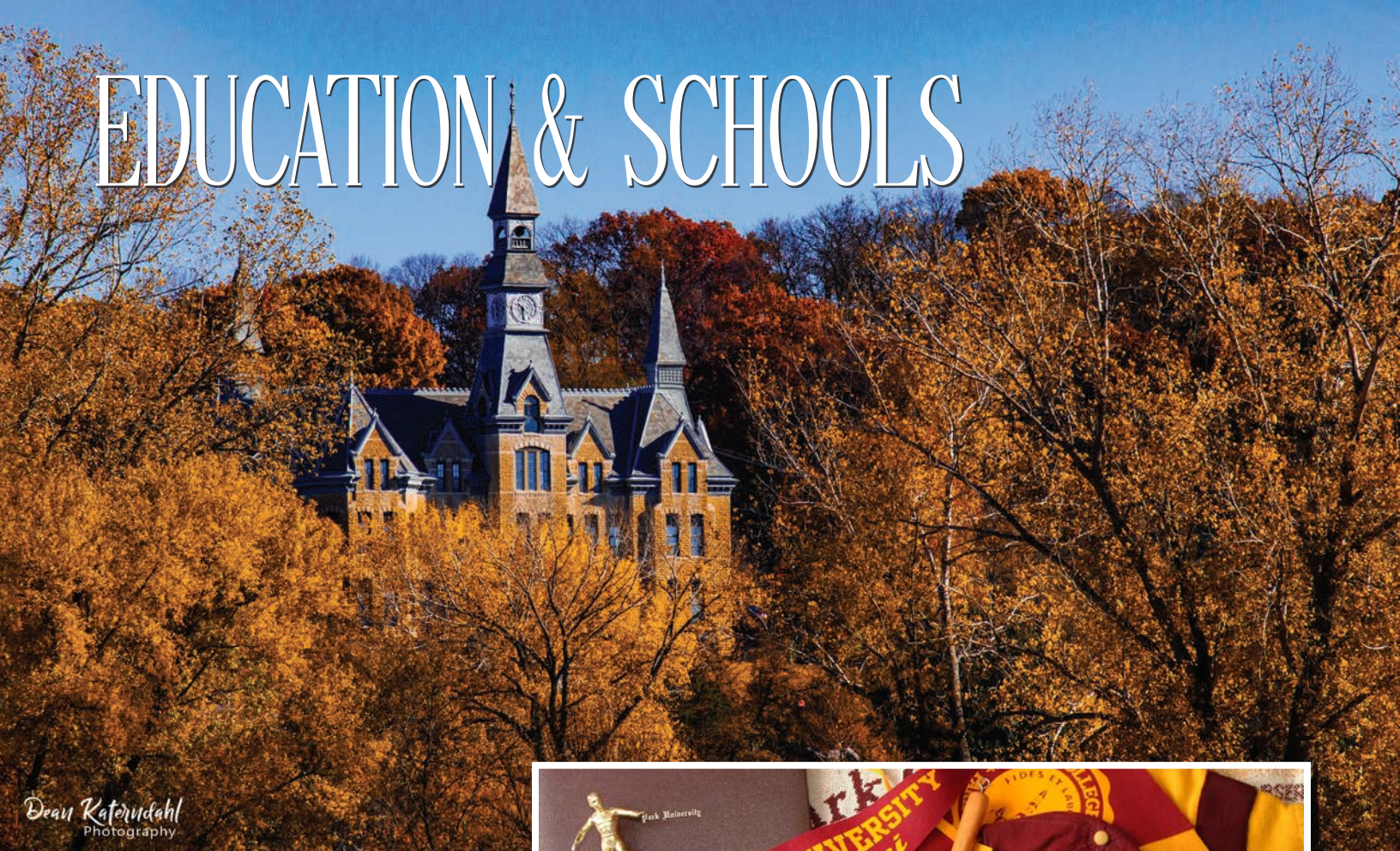
ST. THERESE
CATHOLIC CHURCH and SCHOOL

Discover
ST. THERESE

THIS PARISH
COMMUNITY INCLUDES
OUR CHURCH, SCHOOL
(K-8), AND EARLY
EDUCATION CENTER
(INFANT - PRE-K).



EDUCATION & SCHOOLS



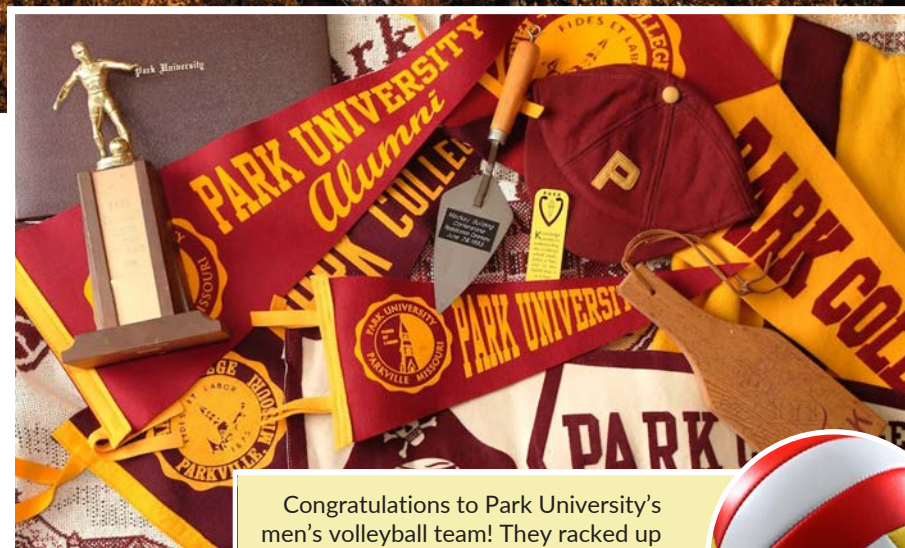
Dean Katerudahl Photography

PARK UNIVERSITY

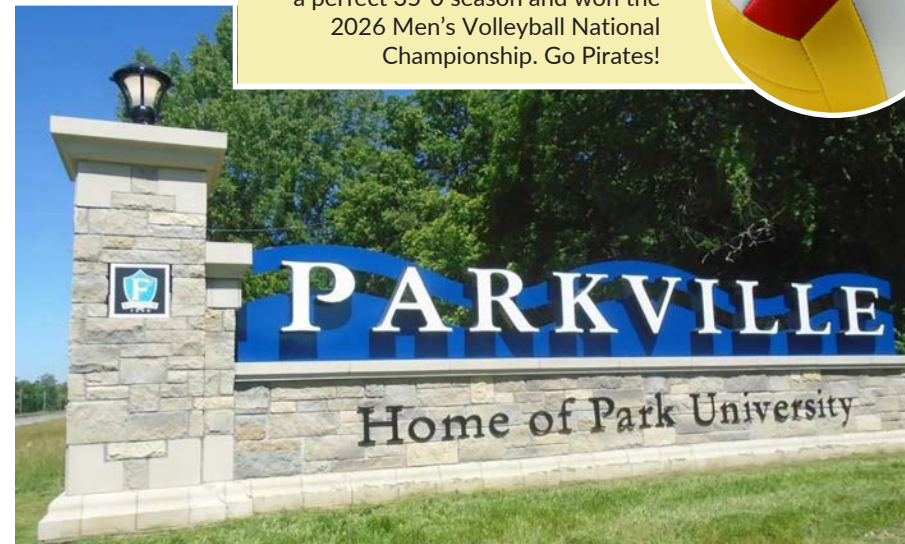
Park.edu

Founded in 1875 in Parkville, Park University has a long history of educating students for success in the global marketplace. Besides the flagship Parkville Campus, Park has 40 other campuses across the country, including 33 on military installations and three others in the Kansas City area (Downtown Kansas City, Independence, MO, and Lenexa, KS).

With its promise of “serving those who serve their community and country with personalized, globally-relevant education for life,” Park University continues to increase access to higher education by offering the quality undergraduate and graduate degrees students desire at locations, times, and delivery formats that best serve their needs. Park’s degree programs are accredited by the Higher Learning Commission, a member of the North Central Association of Colleges and Schools.



Congratulations to Park University's men's volleyball team! They racked up a perfect 35-0 season and won the 2026 Men's Volleyball National Championship. Go Pirates!



PARK HILL SCHOOL DISTRICT

Parkhill.k12.mo.us

The Park Hill School District was awarded the prestigious Missouri Quality Award in 2009 and 2015 and is arguably one of the best education programs in the United States. The school district encompasses most of southern Platte County in the Northland region of the Kansas City Metropolitan Area. There are eight cities and towns that are partly or entirely within the district boundaries, including Parkville, Riverside, Weatherby Lake, Platte Woods, Lake Waukomis, Houston Lake, Northmoor, and Kansas City, Missouri.

There are 21 schools in the Park Hill School District:

High Schools

Serving ninth through 12th grade, Park Hill High School and Park Hill South High School both provide a full, comprehensive high-school experience. Students can also choose the LEAD Innovation Studio, which provides a more



personalized option that gives students opportunities to learn through problem-solving and professional experiences.

Middle Schools

There are four middle schools that each serve students in sixth through eighth grades. Congress and Plaza Middle Schools feed into Park Hill High School, and Lakeview and Walden Middle Schools feed into Park Hill South High School.

Elementary Schools

Students in kindergarten through fifth grades attend one of 12 elementary schools, based on the attendance areas where they live.

Russell Jones Education Center

The Jones Center provides a therapeutic learning environment for students with certain special needs in kindergarten through 12th grade.

Gerner Family Early Education Center

The early education programs at Gerner provide learning opportunities for our community's littlest learners.

New School!
Angeline Washington Elementary opened in August 2025.

Scan the QR code below to see all the details, access school resources and check out our mascot!



ST. THERESE SCHOOL

SaintThereseSchool.org

It is through a broad-based, challenging curriculum integrated with Catholic Christian values that the total life experience of the child is enriched. St. Therese School develops our students' ability to reason and make responsible decisions. We provide the foundation for our K-8th grade students of all denominations to contribute to the community and the global society as they enrich their relationship with God.

St. Therese School K-8

- Home to 600+ students
- Includes kindergarten through 8th grade

St. Therese Early Education Center, Infant to Pre-K

- We educate young children 8 weeks to 5 years of age
- Accredited by NAEYC

LIVING IN PARKVILLE

KANSAS CITY'S MOST CHARMING COMMUNITY



Parkville is home to many lifestyles. All are enriched by the limestone-carved bluffs, rolling hills, wooded vistas, and the Missouri River. Although the shopping and dining district is a delightful jumble of the mid-1800s through 1900's architecture, new development is bringing an exciting synergy to **Parkville** giving it that small-town feel artfully designed to unite old and new.

Historic, traditional, contemporary, and certainly unique are among the choices that homeowners can make in **Parkville**. Homes range from small eclectic bungalows near downtown **Parkville** to upscale quality homes in Thousand Oaks to multimillion-dollar estate homes at The National and Riss Lake. Combine that with our award-winning school district, proximity to local shopping, and a strong sense of community, you will see that **Parkville** has what many families look for when choosing a good community to raise children.

Browse through a few of our neighborhoods for a sampling of what is available in **Parkville**.

THE BLUFFS

The Bluffs is located just west of downtown **Parkville** nestled in the forest up the winding bluff roads overlooking the Missouri River. Homes throughout the neighborhood have unique

architectural designs. The Bluffs neighborhood has some of the most beautiful heavily wooded lots in **Parkville**.

CHAPEL RIDGE

One of **Parkville**'s newer home communities, Chapel Ridge, is located just north of 45 Hwy and Hampton Road on Union Chapel Rd. Chapel Ridge incorporates both single-family and maintenance-provided homes. Amenities include two pools, a clubhouse/gathering room, stocked ponds, and walking trails that connect to Union Chapel Elementary.

CREEKSIDE

Creekside, **Parkville**'s newest development, is located at I-435 and 45 Hwys on the west side of **Parkville**. Communities within Creekside include Creekside Village Townhomes, Creekside Meadows Rental Townhomes, The Meadows at Creekside – Maintenance Provided Single Family Homes, The Woods at Creekside – Single Family Homes, and Thrive Apartments. With stunning scenery and the nostalgic feel of a small town, you will fall in love with this incredible all-ages new home community.

GREEN GLADES AT THE MASTERS

Located off N Childress Ave and NW 81st Street, Green Glades at The Masters sits within Platte County's rolling hills offering expansive water and nature views.

MAIN STREET PARKVILLE

Parkville's historic charm extends to tree-lined Main Street where you will find true **Parkville** homes, with character and age that you come to expect when living in this one-of-a-kind Midwest community.

THE HILLS OF MONTICELLO

The Hills of Monticello, located off I-29 and 64th street, is a small executive subdivision in **Parkville**, Missouri. Residents of this neighborhood enjoy a community swimming pool and playground as well as the exclusivity of a small subdivision aimed at executive housing.

THE NATIONAL

Located along Highway 45, the National is close to shopping, great parks, and wonderful schools. It offers stately homes, a golf course, and maintenance-free homes. As a bonus, these properties surround the Tom Watson-designed golf course. Amenities include swimming pools, tennis courts, fitness center, trails, playground, and an amazing clubhouse.

PARKVILLE HEIGHTS

Parkville Heights is located on Highway 45 north of the **Parkville** Commons. It is a quiet, well-established community

conveniently located near a variety of amenities **Parkville** has to offer.

PINECREST

Pinecrest is located on Route 9 south of Highway 45 and is nestled in a wooded area across from **Parkville** Commons and the Platte County Community Center. This unassuming, private neighborhood offers well-maintained homes and close access to almost anything you need.

RISS LAKE

Riss Lake and its communities, Estates of Riss Lake, Riss Lake Manor, Riss Lake Meadows, West Shore Estates, and the Reserve at Riss Lake offer residents a multitude of amenities to enjoy. Residents have easy access to 134-acre fishing and sailing lake, swimming pools, tennis courts, marina, sand volleyball, basketball court, a nature area and trails, and a playground. Access to Riss Lake communities is available from 9 Hwy, just north of downtown **Parkville**, and from 64th Street, east of 9 Hwy and 64th Street intersection.

RIVERCHASE

The Riverchase subdivision is located off Highway 9 on the southeast side of **Parkville** and is minutes away from Park University, English Landing Park and all that Historic Downtown **Parkville** has to offer!

RIVER HILLS ESTATES

River Hills, located east of **Parkville** between NW Crooked Rd and State Hwy FF, is nestled within winding hills with homes that sit on beautiful, wooded lots with access to the community pool.

THOUSAND OAKS

Portions of Thousand Oaks are located within the **Parkville** city limits. Located near I-435 and 45 Hwy, the neighborhood boasts two pools, tennis courts, beautiful walking trails, a playground, several ponds, and three entrances!

TIMBER RIDGE

Located near I-435 and 45 Hwy, Timber Ridge consists of large estate homes on acre-plus lots surrounded by woods.

EVENTS & FESTIVALS

SPRING

Annual Gala

Hosted by the Parkville Area Chamber & EDC (PACE), this annual event highlights area businesses, outstanding service, and community partnerships. The evening is filled with silent and live auctions, dinner, and entertainment. Registration required.

Parkville Microbrew Fest

Parkville Microbrew Fest, hosted by the Main Street Parkville Association (MSPA), is one of Kansas City's largest beer festivals with live music, handcrafted ales from 75+ breweries, and great food in Historic Downtown Parkville. Visit parkvillemicrobrewfest.com for more details and to buy tickets.

Healthy Kids Day

This event, hosted by the YMCA locally and nationally, includes fun active play, and educational activities to keep kids moving and learning. This free community event helps to motivate and teach families how to develop and maintain healthy routines throughout the year.

Arbor Day Celebration

An Arbor Day event with Platte Landing Park, a community tree planting event. Registration required.

Creekside Movie Night Select Saturdays through September, Infield at Creekside

Hosted by Creekside Parkville and Parkville Parks & Recreation, these free, family-friendly outdoor movies are open to the public.

SUMMER

Rolling on the River

Hosted by Parkville Parks and Recreation, a family-friendly bike ride that starts in E.H. Young Park and ends in Platte Landing Park

Parkville Area Chamber Golf Tournament

Hosted by PACE, a four-man scramble at one of the finest courses in the Kansas City metro, The Deuce at The National. Local food, drinks and games on the course as well as prizes for the winners. Registration required.

National Parks and Recreation Month of July

The Parkville Parks and Recreation department will be offering a variety of free activities this month.

Parkville 4th of July Celebration

Bring the whole family to celebrate Parkville's traditional salute to Independence Day, including a parade, fireworks, and more! Hosted by MSPA.

Creekside Movie Night Select Saturday nights through

September, Infield at Creekside

Hosted by Creekside Parkville and Parkville Parks & Recreation, these free, family-friendly outdoor movies are open to the public.

YMCA Annual Community Block Party

Join us for an afternoon of fun, games, prizes, food, inflatables, vendors from the community and so much more! It is a great way to spend time with family and friends!

Parkville Days

Fri, Aug 21 – Sun, Aug 23, 2026

Celebrate Parkville at the annual Parkville Days festival, hosted by MSPA. Fun for everyone – live music, carnival rides, more than 75 retail and arts/crafts booths, great food, games, and a Saturday parade. parkvillemo.org

Parkville Cruise Nights

1st Sat of every month, Apr - Oct

Bring or find your dream ride at Parkville's monthly car show – browse the unique collection of cars, listen to music, and shop and dine in beautiful downtown Parkville. Hosted by MSPA.

Farmer's Market –

parkvillefarmersmarket.com

Saturdays, Apr 25-Oct 31, 2025

Wednesdays, June 10-Sept 9, 2026

The Farmer's Market is a friendly grower-verified market located at English Landing Park in downtown Parkville, MO. Support your local farmers by shopping at the market! There is a wide array of locally grown fruits & vegetables, meats, farm-fresh eggs, local honey & honey by-products, jams & jellies, homemade baked bread & sweet treats, plants & cut flowers, herbs, mushrooms, and more.

FALL

Creekside Movie Night

**Select Saturdays through September,
Infield at Creekside**

Hosted by Creekside Parkville and Parkville Parks & Recreation, these free, family-friendly outdoor movies are open to the public.

Annual Cornhole Tournament

Hosted by the PACE, this annual event includes a fun social gathering with friendly competition, DJ, food and prizes along with the margarita-off among our member restaurants competing for the traveling trophy.

Pumpkin Carving

The Haunted Forest

Halloween Trick or Treat

Families are invited to Historic Downtown Parkville for safe and fun Halloween "Trick or Treating" at participating businesses. Donations for the Park University Pirate Pantry will also be collected. Hosted by Parkville Parks & Recreation.



Scan the QR code for Parkville's event calendar.

WINTER

7th Annual Trivia Night

Hosted by the PACE, enjoy an evening of trivia fun, friendly competition, food, beverages, prizes, and more. Registration required.

Veteran's Appreciation Day

Hosted by Parkville Parks & Recreation

Parkville Turkey Trot

This event exists to promote family-friendly health & fitness and proceeds support English Landing Park, Parkville Nature Sanctuary and Friends of the Parkville Animal Shelter.

Small Business Saturday Passport Event

Celebrate small businesses and shop local on Small Business Saturday in downtown Parkville. Visit all your favorite stores and restaurants and earn gift cards for participating businesses through the Main Street Parkville Association.

Christmas on the River

This historic downtown Parkville holiday celebration, hosted by MSPA, greets the season with entertainment, local choirs, open houses, family activities, Santa's workshop, and a spectacular fireworks display.

Gallery of Trees

An annual MSPA fundraiser for Christmas on the River, this event includes a festive social gathering including great food from local businesses, a silent and live auction, decorated tree raffles, music, and more.

YMCA - Cookies with Santa

Join us with your little ones for this fun kick-off to the holiday season. Bring your friends and family and join us for cookies and hot cocoa with Santa. We will also have crafts for all the kids, photos with Santa, and much more. This event is free and open to the public. Get into the spirit of the season and help us spread holiday cheer!

Winter Wonderland

Self-guided luminary hike with holiday decor along the trails that lead to the Scout Shelter. Come to Parkville Nature Sanctuary with your family around 4:30 pm to take a whimsical hike with the trails gently aglow.

PARKVILLE AREA CHAMBER & EDC

Special Events

Annual State of the City Address

Hosted by PACE, an annual State of the City presentation by Parkville's Mayor, Dean Katerndahl, during a spring member luncheon.

Economic Summit

The Economic Summit highlights opportunities for growth that benefit all business owners. Registration required. Held in the spring; 2027 date to be announced.

Throughout the Year

Luncheon Series—Held the 2nd Tuesday of the month this is your chance to network and socialize with other chamber members and guests. Monthly speaker and sponsorship opportunities are available. Registration required.

Ribbon Cuttings – Let the chamber welcome you to Parkville, provide a ribbon cutting ceremony and help to promote your business.

Happy Hours – Whether hosted by the chamber or one of our members, a happy hour is a great way to connect in an informal environment.

Sponsorship opportunities are available for all chamber events.

These include:

- Presenting Sponsors
- Entertainment Sponsors
- Food/Beverage Sponsors
- Prize Sponsors
- Table Sponsors
- Game Sponsors
- Event Signage

Sponsorship opportunities are available for all events through the year with levels to fit any budget.



Scan the QR code to see the PACE event calendar at ParkvillePACE.com.



2026 LEADERSHIP

Executive Board

Dale Brouk Chairman of PACE	Melissa Moran Past Chair of PACE Chamber	Bradley Cole
Katie Valentine Chair of PACE Chamber	Dean Katerndahl Mayor of Parkville	Kevin Robinson Treasurer
Lynn McClure	Evan Maxon Alderman of Parkville	Scott Lehr Past Chair of EDC
Greg Plumb Secretary of PACE		Mataya Franken Chair of Young Professionals

Pace Chamber Board

Katie Valentine Chairperson for Chamber	Melissa Moran Past Chamber Chair	Connor McCullough
Matt Eaves	Michael Kimbrel	Heather Versfeld
Kevin Robinson	Tina Welch	Austin Harlow
Connie Revers	City Alderman	Lena Hogan
Secretary	Greg Plumb Vice Chair of Chamber	Mataya Franken Chair of Young Professionals
Jason Fewin		

PACE EDC Board of Directors Voting Members

Scott Lehr Past EDC Chair	Bradley Cole Secretary	Johnny's Rep
Sam Stahnke	Darren Bass	Michael Short
Lynn McClure	Greg Darkenwald	Kyle Tankesley
Dale Brouk Chair of EDC	Brian Mertz	Matt Eaves
Matt Eblen	Dr. Ellen Crowe	David Ritmann
Dean Katerndahl	Arron Schmit	Main Street
Susan Newburger	Greg Plumb	Cory Dudley
Katie Valentine Vice Chair	Dr. Mike Kimbrel	Audra Heller
	Christopher Cline	Tina Chace
	Evan Maxon	Jacob Wilson

Mission

PACE's mission is to proactively work to support a healthy local economic environment that strengthens existing businesses and attracts new investment; and to aggressively promote a vibrant local economy that ensures a high quality of life in Parkville.

Vision

Through collaboration, community improvement, advocacy, and leadership development, the Parkville Area Chamber & EDC aims to be a champion of local business and strives to create opportunities for growth for our community while influencing the highest quality of life for all we serve.

Did You Know...

Most consumers (59 percent) think that being active in the local chamber of commerce is an effective business strategy overall. It's 29 percent more effective, however, for communicating to consumers that a company uses good business practices and 26 percent more effective for communicating that a business is reputable.

If a company shows that it's highly involved in its local chamber (e.g. sits on the chamber board), consumers are 12 percent more likely to think that its products stack up better against its competition.

CHAMBER SPONSORS

The Chamber extends sincere gratitude to all of our members, and especially to those who continue to actively participate in the many events and initiatives that help strengthen our community. It is inspiring to see local businesses coming together, building relationships, supporting one another, and working collectively to make Parkville such a special place to Live, Work, Play, and Grow.



For companies and professionals seeking to have direct impact on their business, there is no more powerful vehicle than a Champion's Club membership with the Parkville Area Chamber of Commerce.

BENEFITS INCLUDE:

- Advisory Level EDC Membership
- Annual (12 months) Foundation Membership
- One Month Social Media Sponsor
- One Table at Gala
- One Team in the Golf Tournament



As we reflect on the significance of this historic year, we also want to pause in appreciation of those who have served — and those who continue to serve — in protection of our nation, our states, our counties, and our local communities. To our military veterans, active service members, law enforcement officers, firefighters, EMS personnel, and all first responders: thank you. Your commitment, sacrifice, and willingness to stand watch over others allows communities like ours to thrive in safety, freedom, and prosperity. We are deeply grateful for all that you do.

HELPFUL COMMUNITY INFORMATION

TRANSPORTATION AND DEMOGRAPHICS

The City of **Parkville** is a fourth-class city located in the northern region of the Kansas City metro. Our boundaries are near Interstate 435 (to the west), Interstate 29, (to the east) Interstate 635 (to the south and east) and Missouri Route 152 (to the north). Missouri Highway 45 and Highway 9 bisect the City.

Connection to transportation outlets makes **Parkville** an excellent choice for business.

- Kansas City International Airport is located approximately 10 miles north of Parkville
- Charles B Wheeler Downtown Airport approximately 9 miles southeast of Parkville
- Amtrak rail travel approximately 12 miles southeast of Parkville
- Near major interstates/highways

Parkville Population	8,366 (2024 estimate)
Total Land Size	14.9 Square Miles
Population Density	559.7/sq mi
Projected Growth Rate	4.9%
Growth Since 2019	24.4%
Rank in State	103rd largest City

Parkville Income, 2024

- Median Household Income \$171,271
- Per capita annual..... \$78,652

- Median Age 39.4
- Overall Poverty Rate..... 1.6%
- Tax Rates 7.61%

Education (2024)

- High school grad or above..... 97.1%
- Bachelor's degree or higher 72%

Unemployment (2025)

- Parkville..... 3%
- State of Missouri..... 3.9%
- United States..... 4.3%

Housing Units

- Total households..... 3200
- Rate of home ownership..... 82%
- Average family size..... 3.43
- Median Household Value \$573,500
- Average Market Rent..... \$1048

References:

- <https://censusreporter.org/profiles/16000US2956288-parkville-mo/>
- <https://www.missouri-demographics.com/parkville-demographics>
- US Bureau of Labor Statistics
- <https://www.apartments.com/rent-market-trends/parkville-mo/>
- <https://www.plattecountyedc.com/employment-statistics/>

HELPFUL NUMBERS

Better Business Bureau, KC (816) 421-7800

City of Parkville (parkvillemo.gov)

City Hall.....	(816) 741-7676
Community Center-YMCA.....	(816) 505-2622
Economic Development.....	(816) 268-5006
Police Department.....	(816) 741-4454

EMERGENCY 911

Fire Department..... (816) 741-2900

License Bureau (816) 286-4351

Mid-Continent Public Library (816) 741-4721

North Kansas City Hospital (816) 691-2000

Park Hill School District..... (816) 359-4000

Park University..... (816) 741-2000

Parkville US Post Office.....(816) 741-5973

Platte County (co.platte.mo.us)

Assessor.....	(816) 858-3310
Auditor.....	(816) 858-3328
Circuit Clerk.....	(816) 858-2232
Collector.....	(816) 858-3356
County Commission.....	(816) 858-2232
County Clerk.....	(816) 858-3340
Courthouse.....	(816) 858-2232
Economic Development.....	(816) 270-2119
Elections.....	(816) 858-4400
Emergency Preparedness.....	(816) 858-2424
Facilities Management.....	(816) 858-3350
Health Department.....	(816) 858-2412
Human Resources.....	(816) 858-3384
Information Technology.....	(816) 858-1944
Juvenile Offices.....	(816) 858-3420
Parks & Recreation.....	(816) 858-3419
Planning & Zoning.....	(816) 858-3338
Prosecutor's Office.....	(816) 858-3476
Public Work's Department.....	(816) 858-2223

Recorder's Office.....	(816) 858-3326
Sheriff 's Office.....	(816) 858-2424
Treasurer's Office.....	(816) 858-1937
Visitor's Bureau.....	(816) 270-3979

Representatives

U.S. Senator Eric Schmitt.....	(573) 751-2853
U.S. Senator Josh Hawley.....	(202) 224-6154
Congressman Sam Graves.....	(202) 225-7041
MO State Senator Tony Luetkemeyer.....	(573) 751-2183
MO Representative Mike Jones, District 12.....	(573) 751-9760
MO Representative Sean Pouche, District 13.....	(573) 751-3618
MO Representative Ashley Aune, District 14.....	(573) 751-6593

Saint Luke's Health System.....(816) 891-6000

State of Missouri (mo.gov)

Attorney General.....	(573) 751-3321
No-call list registration, business registrations, consumer complaints, consumer protection	
Governor.....	(573) 751-3222
State budget, bills, laws, state constitution	
Motor Vehicle.....	(573) 526-2407
Driver's licenses, license plates, vehicle property taxes	
Local Office.....	(816) 584-8651
6400 N Cosby, Kansas City, MO 64151	
Natural Resources.....	(573) 751-3443
State parks, environment, water quality, air pollution	
Revenue.....	(573) 751-3505
Income tax, identity theft, motor vehicle, drivers' license	
Secretary of State.....	(573) 751-4936
Ballot measures, starting a business, voter registration	
Social Services.....	(800) 392-1261
Report child abuse, child support, temporary assistance	
State Highway Patrol.....	(816) 622-0800
Patrols state highways, background checks, amber alerts	

Utilities

Evergny (MO Metro, MO West, KS Metro).....	(888) 471-5275
MO American Water.....	(816) 741-2992
Spire Gas.....	(800) 582-1234

CITY HALL CONTACTS:.....(816) 741-7676

Administration

- City Administration & Organizational information
- Annual budgets
- City policies
- Sewer utility billing
- Tax levy

Business Services

- Business licenses
- Solicitor/peddler/canvasser permits
- Economic development

City Clerk

- Liquor licenses
- Elections
- Online municipal code
- Board of Alderman agendas and minutes
- Volunteer boards and commissions
- Open records requests
- Public information

Community Development (816) 741-9313

- Zoning
- Building permits and building codes
- Code enforcement
- Sign regulations
- Development permits

Finance

- Monthly financial reports
- Accounts payable and receivable

Human Resources

- Job postings
- Recruitment and hiring process

Municipal Court

- Court records and information
- Court payment processing
- City Code and ordinance violation

Parks & Recreation

- Park maintenance
- Off-leash dog park
- Events
- Facility Reservations/Scheduling
- Parkville Nature Sanctuary

Police Department.....(816) 741-4454

- Fingerprinting
- House watch services
- Police report copies
- Shop with a Cop
- Crime Prevention
- Child restraint safety seat installation
- Animal control
- Emergency management

Public Information

- Resident newsletters
- City public relations and events
- City social media outlets
 - Facebook @CityofParkville
 - Twitter @parkvillemo
 - Instagram @parkvillemo64152
- Press releases
- City website parkvillemo.gov

Public Works

- Street Maintenance
- Sewer Plant Management
- Stormwater Quality
- Street Sweeping
- Snow Removal
- Recycling/Waste Disposal Opportunities

Public Works—Operations

- Snow removal
- Street maintenance (potholes, signs, etc)
- Street sweeping

DAILY SPECIALS

LUNCH MENU MON-FRI 11-3

CATERING DELIVERY

CURBSIDE PICK-UP

RANCHO GRANDE CANTINA

RANCHOGRANDECANTINA.COM

LIBERTY 921 W Liberty Dr. Liberty, MO 816-792-4844	PARKVILLE 11015 NW Hwy 45, Parkville, MO 816-505-9097
BLUE SPRINGS 501 NW Jefferson St, Blue Springs, MO 816-228-5550	

RANCHOGRANDECANTINA.COM

the Y WHERE KANSAS CITY CONNECTS.

Connection, community, and fun for every age, stage and ability.

SPECIAL OFFER: FIRST MONTH FREE + NO JOINING FEE with offer code CHAMBER2026

►► Locations include: Parkville | Platte City | North Kansas City

Smiles Included

9033 MO 45 HWY, PARKVILLE, MO
15309 NW BRINK MEYER RD, PARKVILLE, MO

MEMBER LIST

#

gRound Fitness - Parkville
6304 N Chatham Ave
Kansas City, MO 64151
(816) 505-9991
ground.com/locations/mo/
kansas-city/tremont-square

A

A&M Printing
6818 NW Tower Dr
Kansas City, MO 64151
(816) 741-4009
aandmprinting.net

A2 Online Marketing
Parkville, MO 64152
(816) 838-6224
a2onlinemarketing.com

AAON Controls
8500 NW River Park Dr, Ste 108A
Parkville, MO 64152
(816) 505-1100
aaon.com/controls

Acre Restaurant
6325 Lewis St, Ste 119
Parkville, MO 64152
(816) 321-2958
acrekc.com

Aimee Paine PC Real Estate
310 NW Englewood Road
Gladstone, MO 64118
(806) 805-8113
AimeePaine.com

All For Moms Foundation
8829 Long St.
Lenexa, KS 66215
(336) 337-7056
allformomsfoundation.org/

All Season Roofing
6002 NW 9 Hwy
Parkville, MO 64152
(816) 213-8804
asrkcc.com

American Legion Post #318
11 Main St
Parkville, MO 64152
(816) 741-5387
americanlegion318.com/

American Medical Response (AMR)
3121 S Dodgion Ave
Independence, MO 64055
(816) 836-1594
amr.net

AnnieBeth Photography
6509 NW Blair Rd
Kansas City, MO 64152
(785) 393-6879

Anthology of Burlington Creek
6311 N Cosby Ave
Kansas City, MO 64151
(816) 505-3030
anthologyseniorliving.com/senior-living/mo/kansas-city/n-cosby-ave/?utm_source=GBP&utm_medium=organic

ARCO National Construction-KC, Inc.
5015 NW Canal Street
Riverside, MO 64150
(816) 877-0529

Arvest Bank
5600 N Broadway
Gladstone, MO 64118
(913) 953-4290
arvest.com

Assistance League of Kansas City
6101 N Chestnut
Gladstone, MO 64119
(816) 985-6636
alkc.org

Athletico
6366 N Cosby Ave
Kansas City, MO 64151
(816) 683-8618
athletico.com/locations/parkville-mo/

Attic Storage of Parkville
16035 Hwy 45
Parkville, MO 64152
(816) 799-3522
attic-storage.com

Audra Heller & Associates
7001 N Locust Street
Kansas City, MO 64118
(816) 447-1612
audraheller.com

B

B Squared Civic Solutions
5740 Spinnaker Pt
Parkville, MO 64152
(808) 285-6437
bbcivicsolutions.com

Bank of Weston
6363 N Cosby Ave
Kansas City, MO 64151
(816) 746-4555
bankofweston.com

Barbosa's Kustom Kolor Paint/Body Repair
9220 NW 63rd St
Parkville, MO 64152
(816) 741-6348
barbosaskustomkolor.com/

Barbosa's Kustom Kolor
9220 NW 63rd St
Parkville, MO 64152
(816) 741-6348
barbosaskustomkolor.com/

Benton House of Staley Hills
11071 Maplewood Pkwy
Kansas City, MO 64155
(816) 372-1888
bentonhouse.com

Berkshire Hathaway HomeServices Stein & Summers Real Estate
6423 N Cosby
Kansas City, MO 64151
(816) 694-1579
bhhssteinkc.com

Big Shots Bar & Grill
6541 N Cosby Ave
Kansas City, MO 64151
(816) 599-2005
bigshotskcc.com

BNL Bookkeeping Services
Kansas City, MO 64156
(913) 488-6044
bnlbookkeeping.com

Boy Scouts of America
10210 Holmes Rd
Kansas City, MO 64131
(816) 569-4969
hoac-bsa.org

Braces By Billings
8600 Tom Watson Pkwy, #101
Parkville, MO 64152
(816) 741-9007
bracesbybillings.com

Brand Repairman
105 East Street
Suite 12133
Parkville, MO 64152
(816) 591-1084
BrandRepairman.com

Bubbles Wine & Spirits
6953 Elizabeth St
Parkville, MO 64152
(816) 585-7667
bubbleswineandspirits.com

Buffalo Lodge
5956 Route 9 Highway
Parkville, MO 64152
(816) 529-1700
buffalolodgeparkville.com

Burns Dental Care
8600 NW 64th St, Ste 201
Parkville, MO 64152
(816) 741-7477
burnsdentalcare.com

By The Blade LLC
8904 NW 45 Hwy
Parkville, MO 64152
(816) 505-0444
bythebladekcc.com

C

Capital Electric Line Builders Inc.
7050 Ensign Drive
Parkville, MO 64152
(406) 431-4970

CEK Insurance
7001 N Cherry St, Ste 201
Gladstone, MO 64118
(816) 453-8584
cekinsurance.com

Centering Souls
5215 NW Crooked Rd
Parkville, MO 64152
(816) 651-4734
centeringsouls.com

Central Bank of the Midwest
8401 NW 45 Hwy
Parkville, MO 64152
(816) 746-7616
centralbank.net

Char Bar - Parkville
15348 Old Town Drive
Parkville, MO 64152
(816) 622-9600
charbarbbq.com

City of Parkville
8880 Clark Ave
Parkville, MO 64152
(816) 741-7676
parkvillemo.gov

Coberley Woodworks & Renovating
7002 NW Lamar Dr
Parkville, MO 64152
(816) 456-3816
facebook.com/share/16AuEL6ESZ/?mibextid=wwXlfr

Commerce Bank
9155 Missouri 45
Parkville, MO 64152
(816) 234-7186
commercebank.com

Community Blood Center
4040 Main St
Kansas City, MO 64111-2308
(816) 351-1128
savealifenow.org

CommunityAmerica Credit Union
6390 N Cosby Ave
Kansas City, MO 64151
(816) 891-6299
cacu.com

Confluence
417 Delaware Street
Kansas City, MO 64105
(816) 256-6658
thinkconfluence.com/

Connections Bank
7143 Elizabeth St
Parkville, MO 64152
(816) 743-4245
wells-bank.com

Consolidated Public Water #1 of Platte County
18205 NW 45 HWY
Waldron, MO 64092

Contract Furnishings
2107 Grand Blvd.
Ste. C1
Kansas City, MO 64108
(816) 509-1302
contractfurnishings.com

Cool Vintage Watches
105 Main St
Parkville, MO 64152
(816) 420-9085
coolvintagewatches.com/

Costa Oil - 10 Minute Oil Change
7052 Elizabeth Street
Parkville, MO 64152
(816) 612-6165
parkville.costaoils.com

Country Financial - Parkville
8835 NW 63rd St, Ste 101
Parkville, MO 64152
(816) 390-3231
countryfinancial.com/ryan.reed

Country Financial Ryan Reed
8835 NW 63rd St
Parkville, MO 64152
(816) 627-2504
advisors.countryfinancial.com/usa/mo/parkville/ryan-reed

Cowell James Forge Insurance Group
10525 N Ambassador Dr, #300
Kansas City, MO 64153
(816) 471-4245
cjfig.com

Creekside
15325 Old Town Drive
Parkville, MO 64152
creeksideparkville.com/

D

Dairy Queen
8803 MO 45 Hwy
Parkville, MO 64152
(816) 832-8212
dairyqueen.com/en-us/locations/mo/parkville/8803-mo-45/16136/

Dan Demory State Farm
6996 NW 83rd Ter
Kansas City, MO 64152
(816) 741-3558
parkvilleagent.com/

Dave's Foreign Car Repair
6208 NW Bell Rd
Parkville, MO 64152
(816) 741-1498
davesfcr.com

DG Electric, LLC
6205 NW Kelly, Ste #1
Parkville, MO 64152
(816) 584-2878
dgekc.com

E

Educational Therapy Center (ETC)
171 English Landing Dr, Ste 110
Parkville, MO 64152
(816) 584-8860
educationaltherapycenter.org

Edward Jones | Sam Sinclair
6432 NW Crooked Rd
Parkville, MO 64152
(816) 381-6013
edwardjones.com/us-en/financial-advisor/sam-sinclair?query=Sam+Sinclair

Element Restoration
PO Box 14190
Parkville, MO 64152
(816) 510-4242
elementrestorationkc.com

Embassy Landscape Group, Inc
6105 NW River Park Dr
Riverside, MO 64150
(816) 436-4194
embassylandscape.com

Emerson & Co. LLC
1001 Westport Rd
Kansas City, MO 64111
(816) 360-9092
emerson-co.com

Equal Start
12270 NW Meadowlands Drive
Platte City, MO 64079
(816) 462-5700
equalstart.org

Equity Bank
6200 NW 63rd Terr
Kansas City, MO 64151
(816) 587-4322
equitybank.com

eShipping
10812 NW 45 Hwy
Parkville, MO 64152
(816) 505-0198
eshipping.biz

Eventfully Yours KC
8204 NW High Point Dr
Weatherby Lake, MO 64152
(816) 529-3391
EventfullyYoursKC.com

Evergy
1200 Main St
Kansas City, MO 64118
(816) 729-5128
evergy.com

Exceptional Humans
5711 NW 64th Terrace
Kansas City, MO 64484
(816) 442-7144
exceptional-humans.org

F

Fasone and Partners Inc Advertising
6324 N Chatham Ave #110
Kansas City, MO 64152
(816) 210-2306
fasonepartners.com/

Fetterman's Deli
7069 Elizabeth St
Parkville, MO 64152
(816) 590-8670
fettermans.com/

FINK LAW FIRM KC
5555 Northwest Barry Road
Suite A
Kansas City, MO 64154
(816) 516-9535
FinkLawFirmKC.com

Freedom Custom Carts
6209 NW Bell Rd
Parkville, MO 64152
(816) 214-8264
freedomcustomcarts.com

G

GNC
6325 Lewis Dr, Ste 105
Parkville, MO 64152
(816) 382-3408
gnc.com

GO Car Wash
8717 NW 63rd St
Parkville, MO 64152
(816) 587-7000
gocarwash.com

Good Times Auto Body, Inc.
9906 NW 45 Hwy
Parkville, MO 64152
(816) 741-4727
facebook.com/goodtimesab

Gusto Coffee Shop
15325 Old Town Drive,
Suite 101
Parkville, MO 64152
(816) 602-1045
gustocoffeeshop.com

H

H&H Roofing and Restoration
4400 College Blvd, LL140
Leawood, KS 66211
(913) 940-3373
hhiroofing.com

Hair By Chloe & Avery
8357 N Congress Ave
Kansas City, MO 64152
(816) 392-1173
themaneduo.square.site/

Hillcrest Platte County
6600 NW Tower Dr, Ste 101
Platte Woods, MO 64151
(816) 382-3422
hillcrestplatte.org

Holiday Inn Creekside Hotel
16000 Ruth St
Parkville, MO 64152
(816) 648-1200
creeksidehotelkc.com

Hy-Vee
5330 NW 64th St
Kansas City, MO 64151
(816) 505-1311
hy-vee.com/stores/detail.aspx?s=1002

I

Imagine Studios KC
171 English Landing Dr
suite 30
Parkville, MO 64152
(479) 685-4581
imaginestudioskc.com

Integrity Wealth Management
1201 N.W. Briarcliff Pkwy
Suite 246
Kansas City, MO 64116
(816) 233-9403
iwmkc.com

J

Jacqui Bleu Inc
PO Box 14413
Parkville, MO 64152
(816) 741-6036
etsy.com/shop/AuntBetty'sCurio?ref=shop_sugg_market

Java Investments, LLC (dba Scooters Coffee)
9033 NW MO-45 Highway
Overland Park, KS 66224
(402) 490-9103

JDog Junk Removal & Hauling
2404 NE 72nd St
Kansas City, MO 64118
(816) 372-5726
jdog.com

Johnny's Tavern Parkville
15249 NW Brink Meyer Rd
Parkville, MO 64152
(816) 301-7979
johnnystavern.com

JPMorgan Chase
9000 NW 45 Highway
Parkville, MO 64152
(816) 489-4790

K

K&M Lawn Service
14625 NW Tiffany Park Rd
Kansas City, MO 64153
(816) 830-9090
facebook.com/kmlawnservice/

Kansas City Cannabis Co.
8170 NW Prairie View Rd
Kansas City, MO 64151
(816) 808-2909
kccannabis.com

Kansas City Sign Company
8248 NW 101st Terr, #13
Kansas City, MO 64153
(816) 216-6109
kansascitysigns.com

KC Cattle Company, LLC.
110 S Main St
Parkville, MO 64152
(816) 800-4145
kccattlecompany.com

KC LogoWorks
7121 N Polk Ave
Kansas City, MO 64151
(816) 564-3020
kclogoworks.com

L

Lawnscape Specialists
8300 N Green Hills Rd
Kansas City, MO 64151
(816) 284-8097
lawnscapecspecialists.com

Level Builders
8D East St
Parkville, MO 64152
(816) 541-4204
levelbuilderskcc.com

LevelUp Kids, Inc.
5416 NE Antioch Rd
Kansas City, MO 64119
(816) 682-9944
levelupkidsinc.org/

Loch Lloyd Residential Real Esate, LLC
16750 Country Club Drive
Village of Loch Lloyd, MO 64152
(816) 505-4297

Lockbaud
7667 NW Prairie View Rd
Suite 206
Kansas City, MO 64151
(816) 601-1616
lockbaud.com

M

M CON, LLC
1004 Vernon Rd
Wathena, KS 66090
(785) 989-4550
mconunderground.com

Main Street Parkville Association
104 Main St, 2nd Floor
Parkville, MO 64152
(816) 214-8477
parkvillemo.org

Mathnasium of Parkville
6356 N Cosby Ave
Kansas City, MO 64151
(816) 631-0131
mathnasium.com/math-centers/parkville

McClure Electrical Services LLC
222 NW Plaza Dr
Riverside, MO 64150
(816) 266-6370
mcclosureelectricalkc.com

McClure Engineering Company
1700 Swift Street
Suite 100
North Kansas City, MO 64116
(816) 307-2554

Melaleuca
11401 N. Congress Ave
Kansas City, MO 64153
(208) 497-8743
melaleuca.com

Melena Dawn Mortgage Group at PrimeLending
603 EAST ST
Suite 100
Parkville, MO 64152
(816) 550-9075
melenadawnmortgage.com

Metro Rolloff Container Services
6225 NW Kelly Drive
Parkville, MO 64152
(816) 809-1561
metrorolloffcontainer.com

MetroMedia, A Town Square Publications Company
14300 Kenneth Rd, Ste 210
Leawood, KS 66224
(913) 951-8413
metromediapublishers.com

Metropolitan Community College - Maple Woods Campus
2601 NE Barry Road
Kansas City, MO 64156
(816) 604-5278

Meyers Funeral Chapel Northland
401 Main St
Parkville, MO 64152
(816) 741-0251
meyersfuneralchapel.com

Michael & Susan Newburger Foundation
6614 Royal Court
Parkville, MO 64152
(816) 741-4830

Mid-Continent Public Library - Parkville
8815 Tom Watson Pkwy
Parkville, MO 64152
(816) 741-4721
mymcpl.org

Missouri American Water - Parkville
10530 NW State Hwy FF
Parkville, MO 64152
(816) 741-2992
amwater.com/moaw/

Modern Physical Therapy
6112 MO-9
Suite B
Parkville, MO 64152
(816) 468-5278
modernPT.com

Moneta Group
1900 Shawnee Mission Parkway
Suite 225
Mission Woods, KS 66205
(660) 254-4875

Morrill Insurance Group
8407 N Crawford Ave
Kansas City, MO 64153
(816) 891-7771
morrillinsurancegroup.com

N

nbkc Bank
8320 Ward Pkwy
Kansas City, MO 64114
(913)356-5188
nbkc.com

Nick and Jake's
6325 Lewis St, Ste 110
Parkville, MO 64152
(816) 584-8535
nickandjakes.com

NKC Health
2800 Clay Edwards Drive
North Kansas City, MO
64116
(816) 691-2000
nkch.org

Northstar Realty LLC
6114 MO-9
Parkville, MO 64152
(816) 289-8944
northstarrealtykc.com

Not Your Typical Gym
8835 NW 63rd St.
Parkville, MO 64152
(816) 534-5992
notyourtypicalgym.com

P

Park & Pine Homes - Weichert Realtors, Welch & Co.
15245 Metcalf Avenue
Overland Park, KS 66223
(816) 210-2281
parkandpinehomes.com

Park Hill Community Alliance for Youth
3100 NE 83rd St, Ste 1001
Kansas City, MO 64119
(518) 332-2720
parkhillcafy.org

Park Hill School District
7703 NW Barry Rd
Kansas City, MO 64153
(816) 359-4000
parkhill.k12.mo.us

Park Lane Jewelry
PO Box 12033
Parkville, MO 64152
(816) 401-6818
facebook.com/maryburke.
parklane

Park University
8700 NW River Park Dr,
Box 132
Parkville, MO 64152
(816) 665-9481
park.edu

Parkville Art House
5215 NW Crooked Road
Parkville , MO 64152
(816) 651-4734

Parkville Commons
River North Development,
LLC
PO Box 14146
Parkville, MO 64152
(816) 509-7754

Parkville Commons 140, LLC
7607 NW John Anders Rd
Kansas City, MO 64152
(816) 616-9016

Parkville Economic Development Council
8880 Clark Ave
Parkville, MO 64152
(816) 268-5006
parkvillePACE.com

Parkville Frame Gallery
6325 Lewis St, Ste 115
Parkville, MO 64152
(816) 326-7949
parkvilleframegallery.com

Parkville IDA
8880 Clark Avenue
Parkville, MO 64152
(816) 268-5006

Parkville Living Center
819 Main St
Parkville, MO 64152
(940) 642-4420
parkvillelivingcenter.org

Parkville Nutrition
8835 NW 63rd St, Ste 104
Parkville, MO 64152
(816) 569-5825
facebook.com/Parkville-
Nutrition-101647359213160

Parkville Parks and Recreation
8880 CLARK AVE
PARKVILLE, MO 64152-
3727
(816) 741-7676
parkvillemo.gov/community/
parks/

Parkville Pediatric Dentistry
6004 NW 9 Hwy
Parkville, MO 64152
(816) 746-5437
parkvillepediatricdentistry.com

Parkville Price Chopper
9107 NW 45 Hwy
Parkville, MO 64152
(816) 584-1111
mypricechopper.com

Parkville Rotary Club
PO Box 12064
Parkville, MO 64152
parkvillerotary.org/

Parkville Women's Clinic
6326 N Lucerne Ave
Kansas City, MO 64151
(816) 719-2680
pwc4life.us

Parkway Wealth Advisors, LLC
6310 Lamar Ave
STE 245
Overland Park, KS 66202
(913) 291-0386
parkwaywealth.com

Patchmaster Kansas City
820 Armour Rd
#12325
North Kansas City, MO
64116
(816) 400-8721
kansascity.patchmaster.com

Phoenix Health Oasis
6008 MO-9
Suite C
Parkville, MO 64152
(816) 549-2475
phoenixhealthoasis.com

Pizza Shoppe
7687 NW Prairie View Rd
Kansas City, MO 64151
(816) 741-6111
pizzashoppe.com

Platte County Convention & Visitor's Bureau
11724 NW Plaza Circle,
#200
Kansas City, MO 64153
(816) 270-3979
visitplatte.com

Platte County Health Department
7925 NW 110 St
Kansas City, MO 64153
(816) 858-2412
plattecountyhealthdept.com

Platte Rental & Supply
6304 NW Bell Rd
Parkville, MO 64152
(816) 741-4900
platterental.net

Platte Senior Services, Inc.
12200 N. Ambassador
Drive, Suite 104
KANSAS CITY, MO 64163
(816) 270-4100
platteseniorservices.org/

Prep Baseball Tournaments Kansas City
15900 Long Ball St.
Parkville, MO 64152
(816) 399-9001
creeksidebaseball.com/

Prima Facie Bistro and Market
12 East 1st Street
Parkville, MO 64152
(816) 777-6315
primaparkville.com

Primrose Retirement Community
8559 N Line Creek Pkwy
Kansas City, MO 64154
(816) 468-8282
primroseretirement.com

ProPrint Digital
1916 Clay St
N Kansas City, MO 64116
(816) 421-0298
proprintdigital.com

Q

QuikTrip
5725 Foxridge Dr
Mission, KS 66202
(913) 905-2059
quiktrip.com

R

Rancho Grande Cantina
11015 NW HWY 45
Parkville, MO 64152
(806) 505-9097
ranchograndecantina.com

RE/MAX Heritage
7020 NW 83rd Terr
Kansas City, MO 64152
(816) 587-2323
tamihayes.com

Redeemer Episcopal Church
7110 Hwy 9 NW
Kansas City, MO 64152
(816) 741-1136
redeemerkc.org/

Restoration 1-North Kansas City
1142 Minnesota Avenue
Kansas City, KS 66102
(913) 701-7375
restoration1northkansascity.com

Restore Hyper Wellness
8528 NW Prairie View Road
Kansas City, MO 64153
(816) 301-6635
restore.com/locations/mo-
kansas-city-zona-rosa-mo014

RevLocal
5738 NE Gladstone Ln
Gladstone, MO 64119
(816) 200-1893
RevLocal.com

Rio Salon
8878 NW 63rd St, Ste 104
Parkville, MO 64152
(816) 587-5299
riosalonkc.com

River North Development, LLC
PO Box 14146
Parkville, MO 64152
(816) 509-7754

Riverside Area Chamber of Commerce
1508 NW Vivion Road
Riverside, MO 64118
(816) 281-6360
riversidemochamber.org/

Rochester Brewing & Roasting Co
100 S Main St
Parkville, MO 64152
(816) 381-6133
rochesterkc.com/

Rockstar Renovations LLC
510 NE Lindberg Dr
Kansas City, MO 64118
(785) 840-7209

Roosters Men's Grooming Center
9008 NW Hwy 45, Ste 102
Parkville, MO 64152
(816) 673-1091
roostersmgc.com

Row House
6264 Lewis St.
Suite 107A
Parkville, MO 64152
(816) 401-6299
therowhouse.com/location/
parkville

Roxanne's Cafe
6420 NW Crooked Road
Parkville, MO 64152
(816) 505-4431
roxannescafe.com

S

Saint Luke's Health System
5830 NW Barry Rd
Kansas City, MO 64154
(816) 891-6000
saintlukeskc.org/

Schomburg Heating & Cooling, Inc
10903 NW 45 Highway
Parkville, MO 64152
(816) 431-4098
schomburgheatcool.com

School of Rock
1315 East Street
Parkville, MO 64152
(816) 842-7625
kansascity.schoolofrock.com

Security Bank Of Kansas City
6344 N Chatham Ave
Kansas city, MO 64151
(816) 420-5257
securitybankkc.com

Select Physical Therapy
4716 NE Pocono Circle
Lees Summit, MO 64064
(816) 547-8520
selectmedical.com

Senior Helpers
851 NW 45th St, #207
Gladstone, MO 64116
(816) 455-9300
seniorhelpers.com/
Kansascitynorth

Shackelford Botanical Designs
6521 N Cosby Ave
Kansas City, MO 64151
(816) 587-6787
sbotanicals.com/

Shelter Insurance
7709 NW Prairie View Rd
Kansas City, MO 64151-
1542
(816) 587-8668
shelterinsurance.com/nvoorhies

Shelter Insurance
8835 NW 63rd St, Ste 102
Parkville, MO 64152
(816) 746-0818
shelterinsurance.com/ca/agent/
jonmiller

Skin Fit Medical Spa
15325 Old town drive
Parkville, MO 64152
(816) 298-6051
skinfitmedicalspa.com

Skin Solutions, LLC
8878 NW 63rd St, Ste 104
Parkville, MO 64152
(816) 587-5299
skinsolutionskc.com

Southern Bank
7553 NW Barry Rd
Kansas City, MO 64153
(816) 587-4332
bankwithsouthern.com

Southern Platte Fire Protection Dist.
8795 NW Hwy 9
Kansas City, MO 64153
(816) 741-2900
spfpd.com

Sparkle Squad of Kansas City North
5519 NW 62nd Ct
Kansas City, MO 64151
(816) 590-2155
sparklesquad.com/kansas-city-
north-mo/

Spectrum Business
9225 Indian Creek Pkwy,
Ste 500
Overland Park, KS 66210
(816) 599-1984
spectrum.com/business

Spire
7500 E 35th Terr
Kansas City, MO 64129
(816) 399-9401
spireenegy.com

St. Therese Catholic Church and School
7207 NW 9 Hwy
Kansas City, MO 64152
(816) 741-2800
sttheresenorth.org

Stifel Nicolaus & Co
4622 Pennsylvania Avenue
Kansas City, MO 64112
(816) 203-8739
stifel.com/

Stone Canyon Pizza Company
15 Main St
Parkville, MO 64152
(816) 746-8686
stonecanyonpizza.com

Stretch Zone - Parkville
6129 NW 63rd Terr
Kansas City, MO 64151
(816) 621-3333
stretchzone.com/locations/
parkville

Synergy Services
400 E 6th St
Parkville, MO 64152
(816) 505-4945
synergyservices.org

T

T-Shotz
660 NW Metro N Dr
Kansas City, MO 64155
(816) 702-1320
tshotz.com

Taco Bell
7085 Elizabeth St
Parkville, MO 64152
(816) 601-0570
locations.tacobell.com/mo/
parkville/7085-elizabeth-st

Talented Tots Parkville
10801 NW Crooked Rd.
Parkville, MO 64152
(816)741-1817
talentedtots.org/

TerraVox Winery
19310 NW Farley Hampton
Rd
Kansas City, MO 64153
(816) 354-4903
terravox.wine

TESSERE (formerly GLMV Architects)
9229 Ward Pkwy
Kansas City, MO 64114
(816) 444-4200
tessere.com/

The 19th Hole, LLC
5 Mill St
P.O. Box 14166
Parkville, MO 64152
(816) 694-7214

The Car Wash KC
6951 NW 83rd St
Kansas City, MO 64152
(816) 599-2222
thecarwashkc.com

The Classy Can Co
14007 NW 73rd St
Kansas City, MO 64152
(417) 825-9511
theclassycanco.com

The Eye Center of Parkville
6325 Lewis Dr, Ste 114
Parkville, MO 64152
(816) 505-0100
theeyecenterofparkville.com/

The Farmer's House
415 Main St
Weston, MO 64098
(816) 386-4009
thefarmershouse.org

The Light Finders
13002 NW 79th St
Parkville, MO 64152
(816) 550-5905
thelightfinders.com/

The National Golf Club of Kansas City
6700 N National Dr
Parkville, MO 64152
(816) 746-0200
invitedclubs.com/clubs/the-
national-golf-club

The North 84
22350 Grass Pad Rd
Platte City, MO 64079
(816) 370-5589
thenorth84.com/

The Peanut 64
6409 N Cosby Ave
Kansas City, MO 64151
(816) 859-5005
peanutmidwest.com/the-peanut-
on-64th-kansas-city-mo/

The Window Fashion Store
6330 N Lucerne Ave
Kansas City, MO 64151
(816) 741-0200
thewindowfashionstore.com

Thrivent
8600 NW 64th St, Ste 205
Parkville, MO 64152
(816) 844-9477
connect.thrivent.com/jason-
henke

TSI Global Companies
1365 North Winchester
Street
Olathe, KS 66061
(913) 599-3666
tsi-global.com

Twill.
6325 Lewis Dr, Ste 104
Parkville, MO 64152
(816) 584-2746
twillboutique.com

U

Undo Skincare & Wellness Center
6442 NW Crooked Rd
Parkville, MO 64152
(816) 974-8636
undotoday.com

Universal Construction Company
1615 Argentine Boulevard
Kansas City, KS 66105
(913) 342-1150
universalconstruction.net

Urban Tree Specialists, LLC
8600 N Childress Ave
Kansas City, MO 64153
(816) 214-8327
urbantreekc.com

V

Verimore Bank
1925 Burlington St
N Kansas City, MO 64116
(816) 897-8408
verimore.bank

Versfeld & Hugo Immigration Law
PO Box 29070
12 East 1st Street. Suite 200
Parkville, MO 64152
(816) 891-8600
VersfeldLaw.com

Victory Mechanical Group
11261 n Belleview ave
Kansas City , MO 64155
(816) 714-9789
Victoryhvacpro.com

Visage, Inc.
4613 NW Gateway Ave
Riverside, MO 64150
(816) 891-9550
visage-inc.com

W

Weatherby Capital, LLC
9143 NW 86th Ct
Kansas City, MO 64153
(816) 604-9443
weatherby-capital.com

Westlake ACE Hardware
9200 NW 45 Hwy
Parkville, MO 64152
(816) 330-6301
westlakehardware.com

Wexford Place
6500 N Cosby Ave
Kansas City, MO 64151
(816) 587-5700
seniorstar.com

Whiskey River Pizza & Pub
15425 Old Town Dr
Suite 116
Parkville, MO 64152
(816) 892-9302
whiskeyriverkc.com

White Farmhouse Flowers
113 S Main St
Parkville, MO 64152
(816) 550-4820
whitefarmhouseflowers.com

Wilson Heating & Cooling
6324 N Chatham Ave #268
PO Box 802
Kansas City, MO 64151
(816) 873-2345
wilsonkc.com

Window Cleaner Guys
6324 N Chatham Ave
271
Kansas City, MO 64152
(765) 716-0152
windowcleanerguys.com/

Y

YMCA - Platte County Community Center South
8875 Clark Ave
Parkville, MO 64152
(816) 505-2622
kansascityymca.org/locations/
platte-county-south

Z

ZenBusiness
5511 Parkcrest Drive, Suite
103
Austin, TX 78731
(844) 493-6249
zenbusiness.com/



SUPPORT OUR MEMBER BUSINESSES!

Scan the QR code for instant access to our online member directory, or visit parkvillepace.com/list.





THE NATIONAL
GOLF CLUB OF KANSAS CITY



THE BLUFFS
GOLF CLUB



Two Parkville Courses. One Unforgettable Experience.



At The National and The Bluffs, Members enjoy something unique: access to two championship golf courses designed by Kansas City legend Tom Watson, each with its own style and challenge.

Whether you're looking for a place to play your best golf, connect with family and friends, or host a memorable tournament, meeting, or celebration, you'll find a lifestyle designed around community, recreation, and unforgettable experiences.

And, Member or not, you're always welcome to host events with us.



SCAN TO EXPLORE
MEMBERSHIP, TOURS,
OR PLAN YOUR EVENT