

Eagle Community Profile

The Best Place to Live in Idaho...Hands Down.

Eagle is the most attractive place to live and work in Idaho - for all ages, at every stage in life.

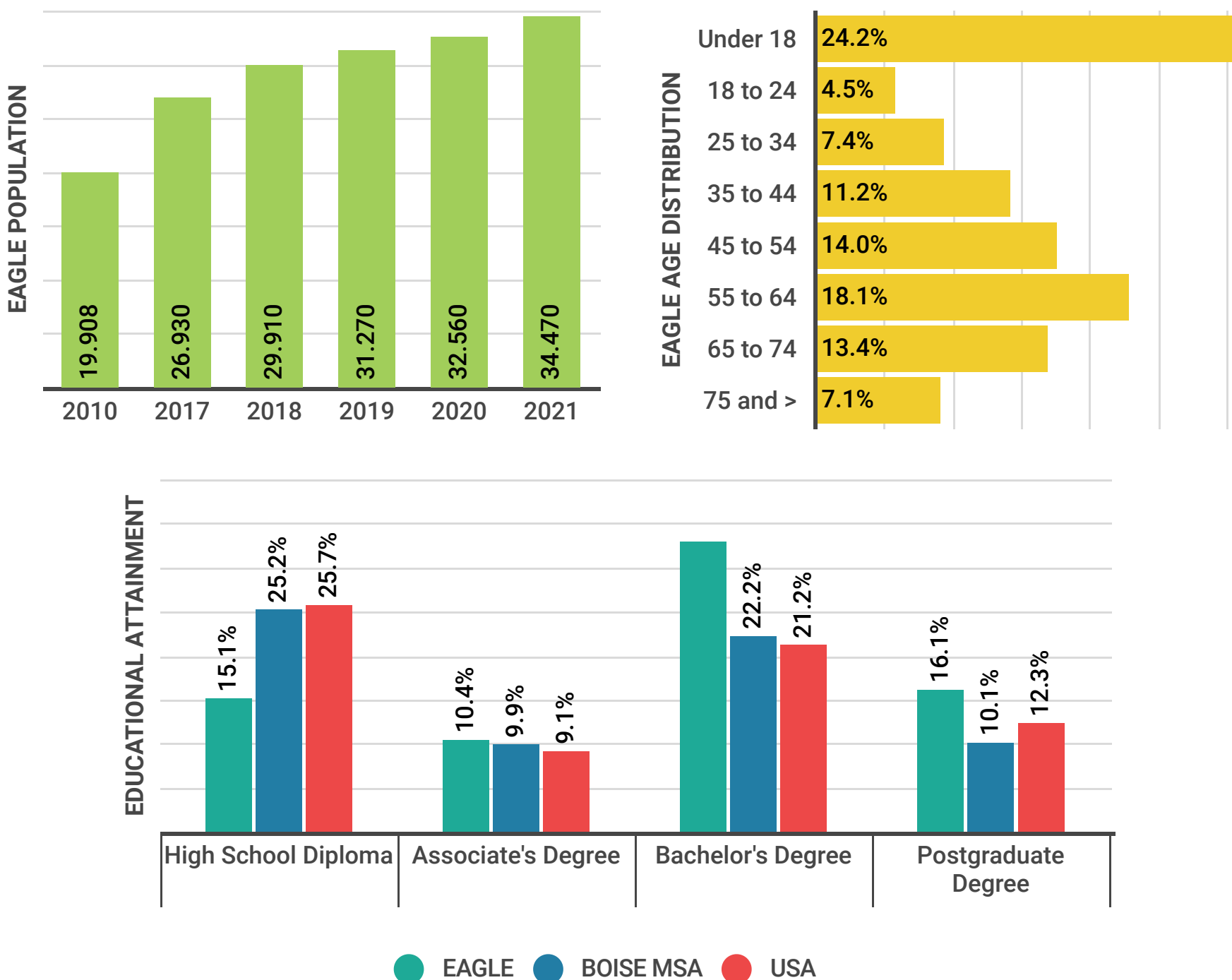
Situated in the Rocky Mountain state of Idaho, east of the Bogus Basin Mountains, Eagle offers an extraordinary quality of life, supported by beautiful well-designed residential and commercial neighborhoods, miles of pedestrian pathways and trails, top-rated schools, restaurants from five-star elegance to drop-in casual, executive style housing, outstanding healthcare services, and an abundance of outdoor recreational opportunities.

Combine all of this with its high-class human-scale architecture, thoughtfully planned out and manicured landscape, acres and acres of public parks, abundance of open space, the scenic backdrop of rolling foothills, and the tranquil sounds of the river - and it's no surprise why Eagle is **consistently ranked as the "Best Place to Live in Idaho"**, and why attracting and retaining talent is so easy.

We invite you to [discover all the reasons](#) Eagle is the best location choice for companies and individuals alike.

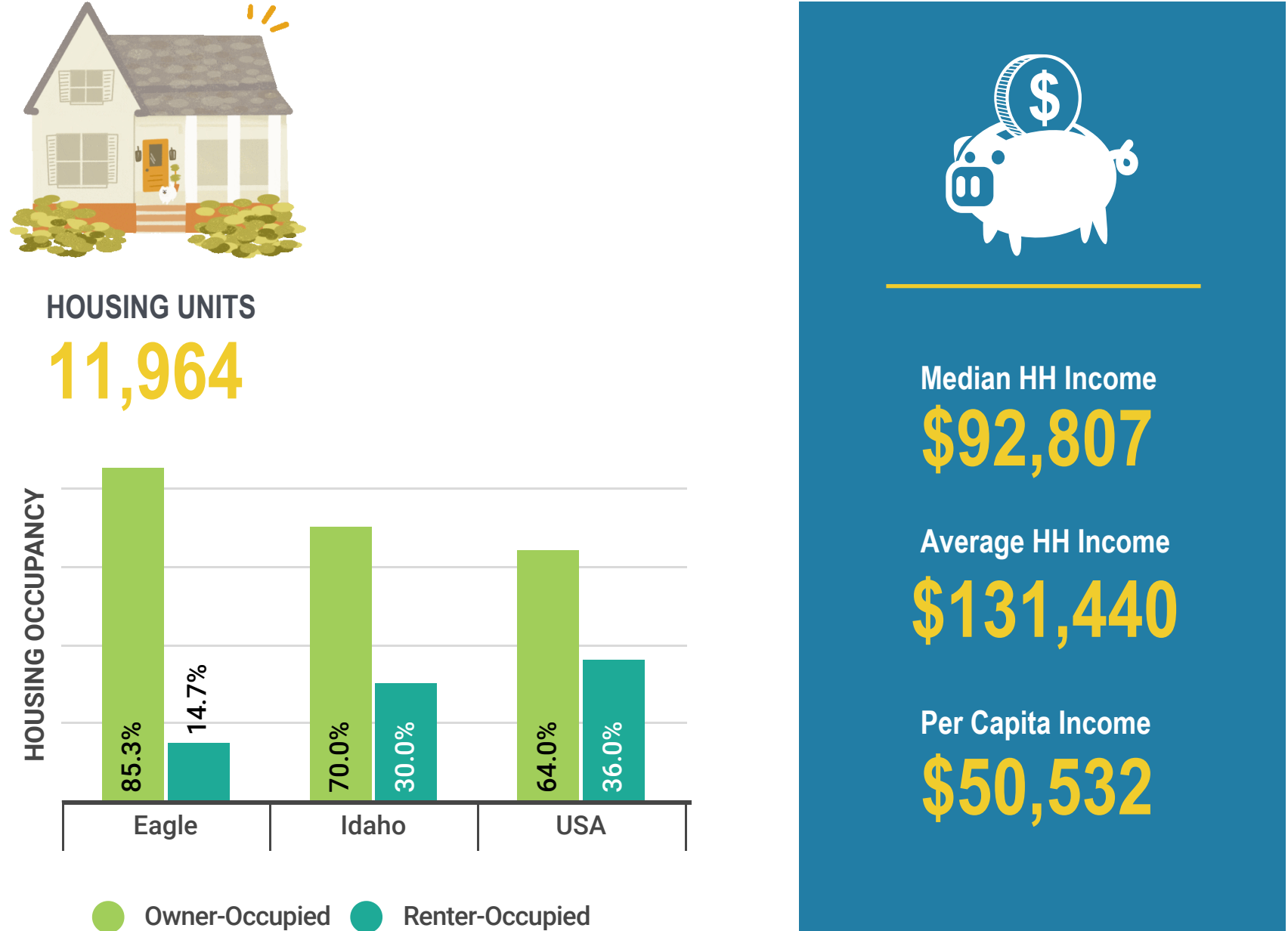
DEMOGRAPHICS - Population, Age Distribution and Educational Attainment

Source: Community Planning Association of Southwest Idaho and JobsEQ 2021Q3



DEMOGRAPHICS- Housing and Income

Source: JobsEQ 2021Q3



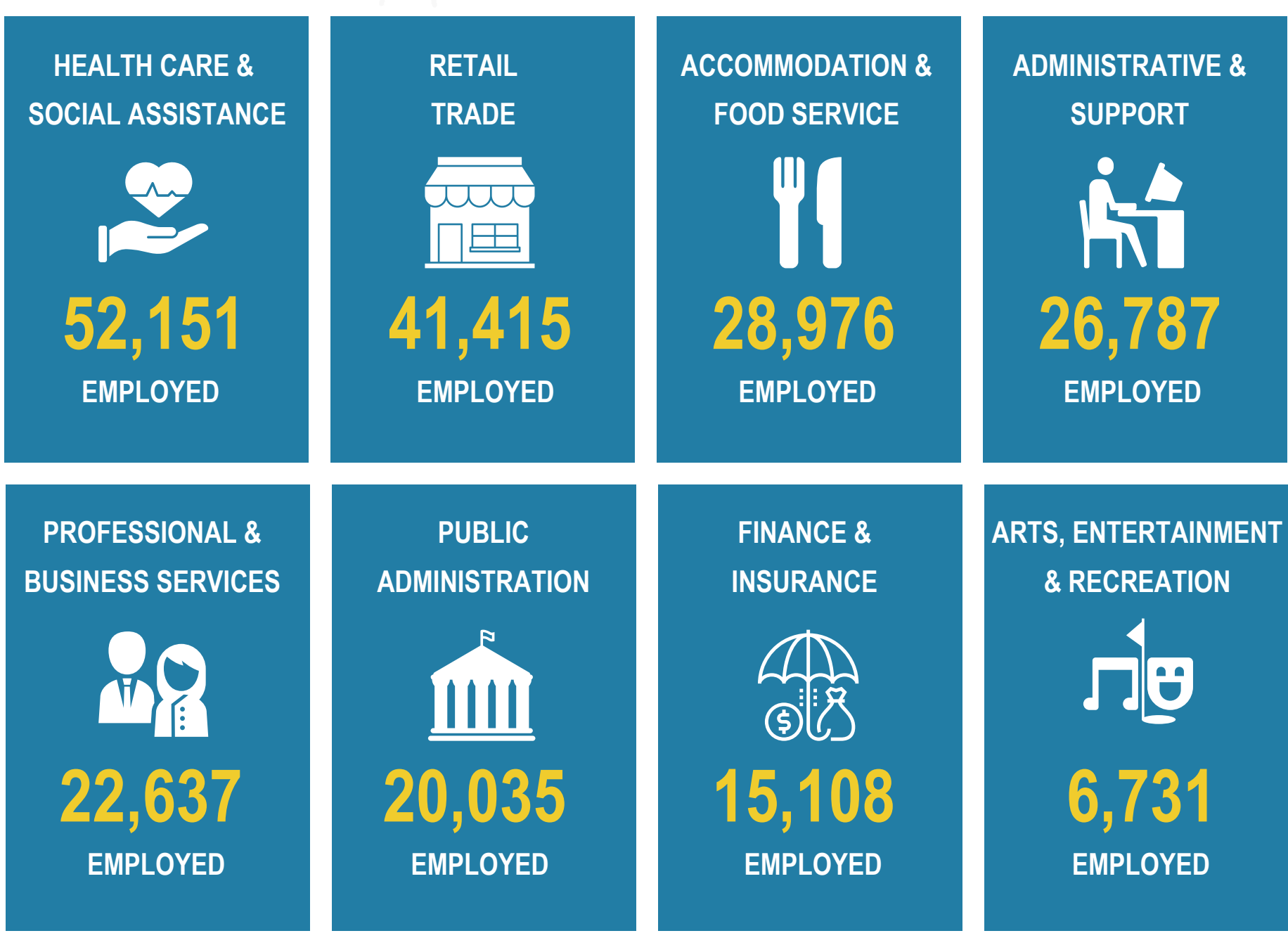
WORKFORCE- Metropolitan Statistical Area (MSA)

Source: JobsEQ 2021Q3



SNAPSHOT

EMPLOYMENT IN INDUSTRY SECTORS RELEVANT TO EAGLE'S INDUSTRY FOCUS



21.5 Min.

MEAN COMMUTE TIME
(EAGLE)



26.9 Min.

MEAN COMMUTE TIME
(USA)

←→
**COMMUTE TIME
COMPARISON**

[Contact our office](#) for more information or to request customized data for your project.

To learn more about our business concierge services, [click here](#).