



# Community Meeting

September 25, 2025

*The City of Statesville Fire Department is a rapid response force committed to protecting the safety and well-being of the community from all hazards*

# FIRE DEPARTMENT COMMAND STAFF



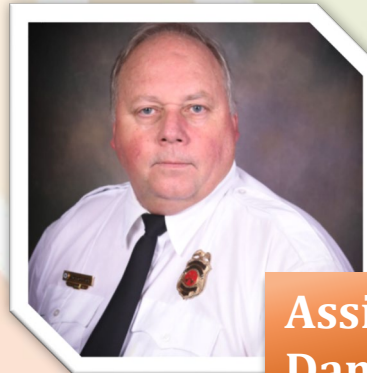
**Fire Chief: Glenn Kurfees**



**Deputy Fire Chief: Kyle Bell**



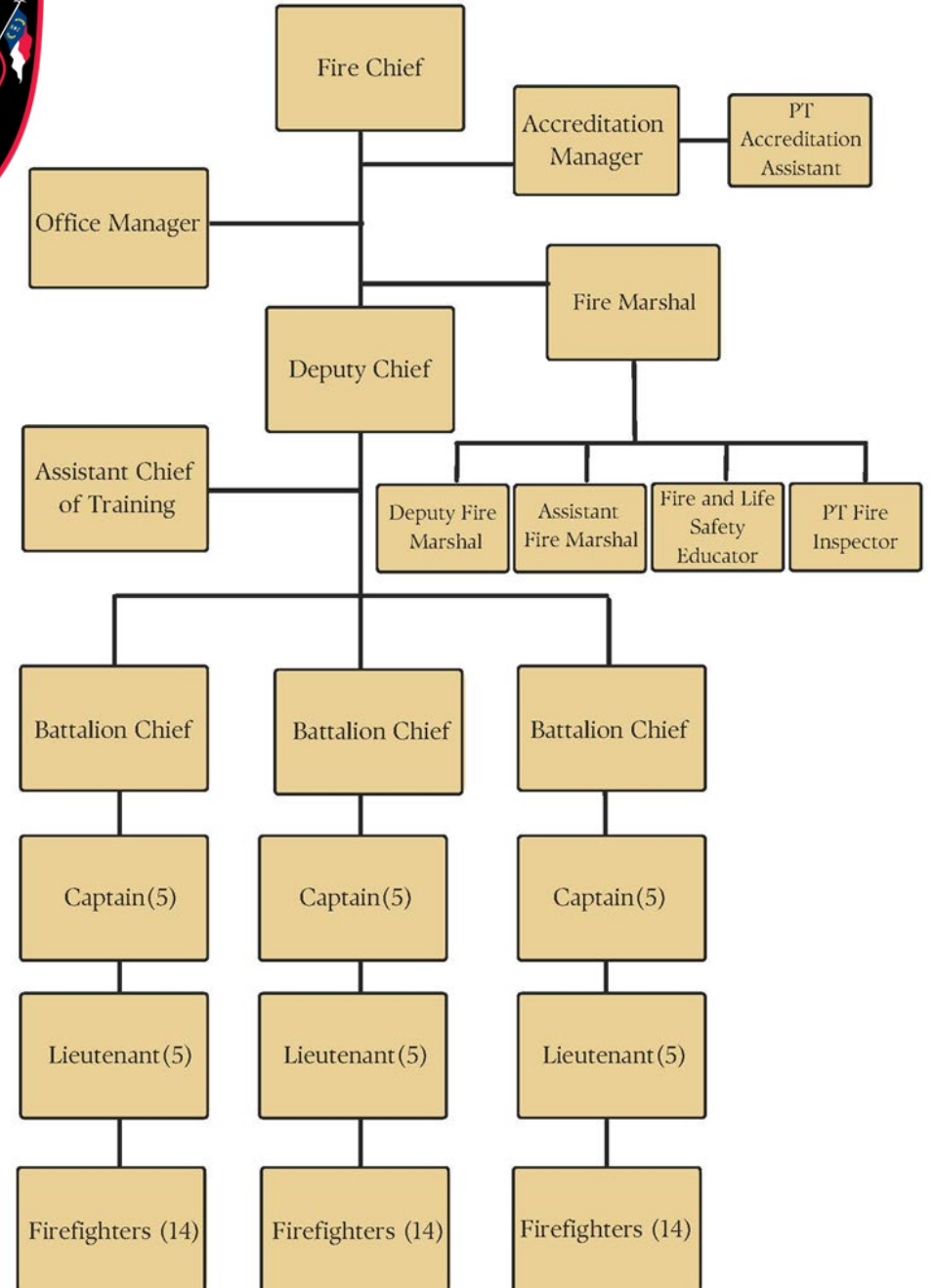
**Fire Marshal: Pete Morrison**



**Assistant Chief of Training:  
Danny Nicholson**



# Fire Department Organizational Chart



# STATESVILLE FIRE DEPARTMENT ACHIEVEMENTS



**Accredited Agency**



**ISO 1**



**Heavy Rescue Certified**



**Hazmat Team**



*The City of Statesville Fire Department is a rapid response force committed to protecting the safety and well-being of the community from all hazards*





# What is Accreditation?



- ❖ Accreditation is a recognition and certification program offered by the Center for Public Safety Excellence (CPSE) that fire and emergency service organizations voluntarily undertake to demonstrate their commitment to excellence
- ❖ This program is designed to assess and validate the quality and effectiveness of fire and emergency service organizations in meeting established professional standards
- ❖ CPSE Accreditation is a rigorous and comprehensive process. It serves to evaluate and improve the services provided to the community, ensure the safety of residents, and enhance the overall efficiency of the Department
- ❖ SFD produces a Strategic Plan, Standard of Cover/Community Risk Assessment, and Self Assessment Manual along with many other pieces of evidence to present to CPSE for continuous improvement
- ❖ There are 338 accredited agencies internationally
- ❖ There are 26 accredited agencies in North Carolina, 14 of the 26 have an ISO 1 rating
- ❖ 14% of the U.S. population is protected by an accredited agency
- ❖ The Department received re-accreditation in February 2024
- ❖ The accreditation process is continuous, and the Department will be up for re-accreditation in 2028/2029
- ❖ SFD is among only, 125 Fire Departments, internationally, that are both accredited and have an ISO 1 rating





## What is an ISO rating?

- ❖ ISO (Insurance Services Office) ratings play a critical role in assessing the fire protection services provided within a community.
- ❖ ISO Ratings, or Public Protection Classification (PPC) ratings, are evaluations conducted by the Insurance Services Office, an independent organization.
- ❖ Insurance companies use these ratings to determine property insurance premiums for businesses and homeowners within a community.
- ❖ ISO ratings are based on a comprehensive assessment of a community's fire protection services.
- ❖ ISO evaluates:
  - ❖ The Fire Department's staffing, training, equipment, and response times
  - ❖ The number and distribution of Fire Stations are also considered
  - ❖ ISO assesses the availability and adequacy of the water supply for firefighting purposes, including factors like water sources, hydrant locations, and water flow rates
  - ❖ The effectiveness of the emergency communications system, including 911 call handling, dispatching, and coordination, is examined
- ❖ The ISO rating scale typically ranges from 1 to 10, with 1 representing the highest level of fire protection and 10 indicating little to no fire protection.
- ❖ The City of Statesville currently has an ISO Class 1 rating

*The City of Statesville Fire Department is a rapid response force committed to protecting the safety and well-being of the community from all hazards*




**Legend**


 **Station #1**


**Geo-  
Proximity  
Zone**

**Fire Districts**

 **Station #1**

 **Station #2**

 **Station #3**

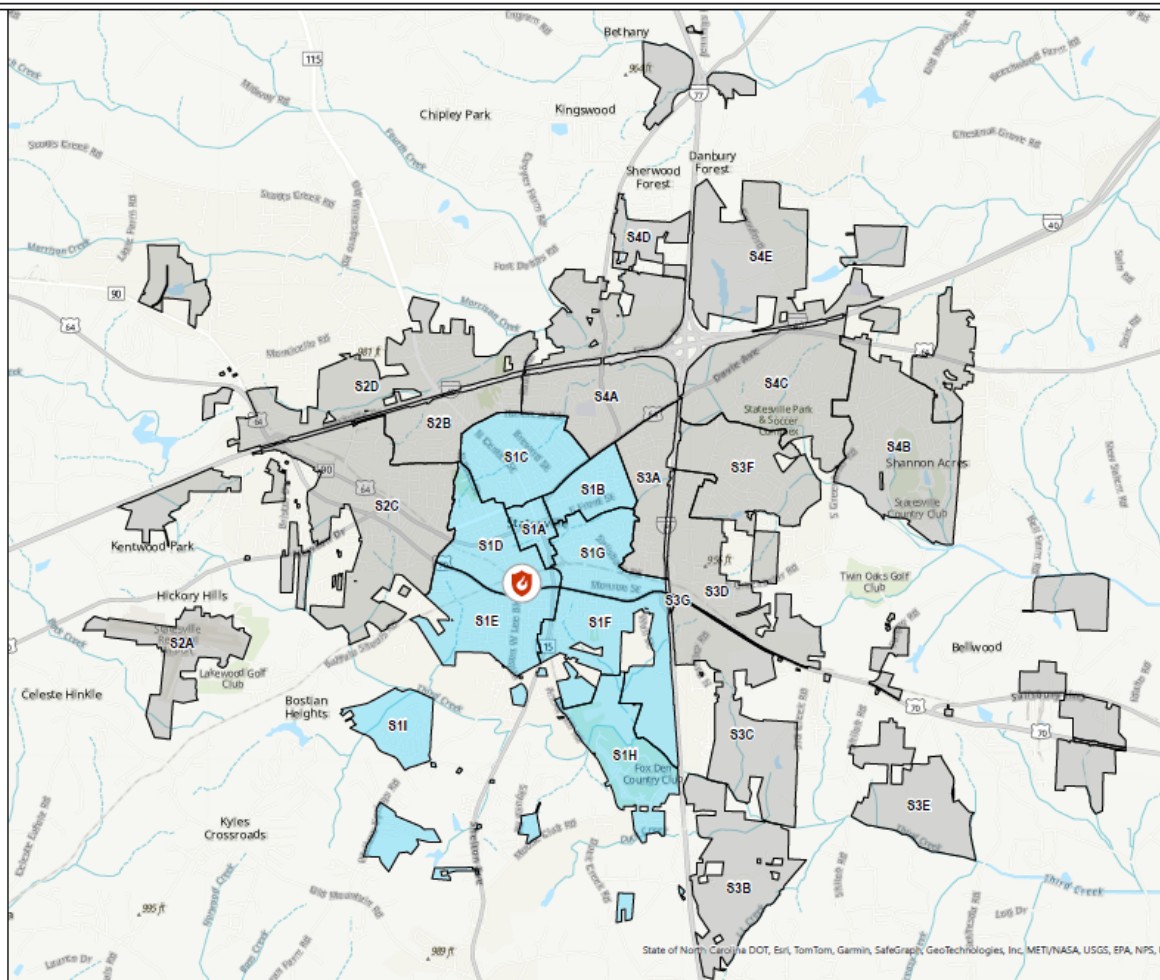
 **Station #4**



0 5,000 10,000  
Feet

Scale: 1:1,220

Source: City of Statesville Fire Department



# Fire Station 1 822 5<sup>th</sup> Street Est. 2024

*The City of Statesville Fire Department is a rapid response force committed to protecting the safety and well-being of the community from all hazards*

## BATTALION CHIEF, ENGINE 1 & LADDER 1



## ADMINISTRATION & FIRE MARSHAL



# Fire Station 1 Additional Apparatus



**BRUSH TRUCK**



**UTV**

*The City of Statesville Fire Department is a rapid response force committed to protecting the safety and well-being of the community from all hazards*



# Fire Station 1 Additional Apparatus



**SQUAD TRUCK 1**



**LADDER 2 (RESERVE)**





# Fire Station 2 110 Security Drive Est. 1962



**ENGINE 2**



## Statesville Fire Department

### Legend

Station #2

Geo-Proximity Zone

### Fire Districts

Station #1

Station #2

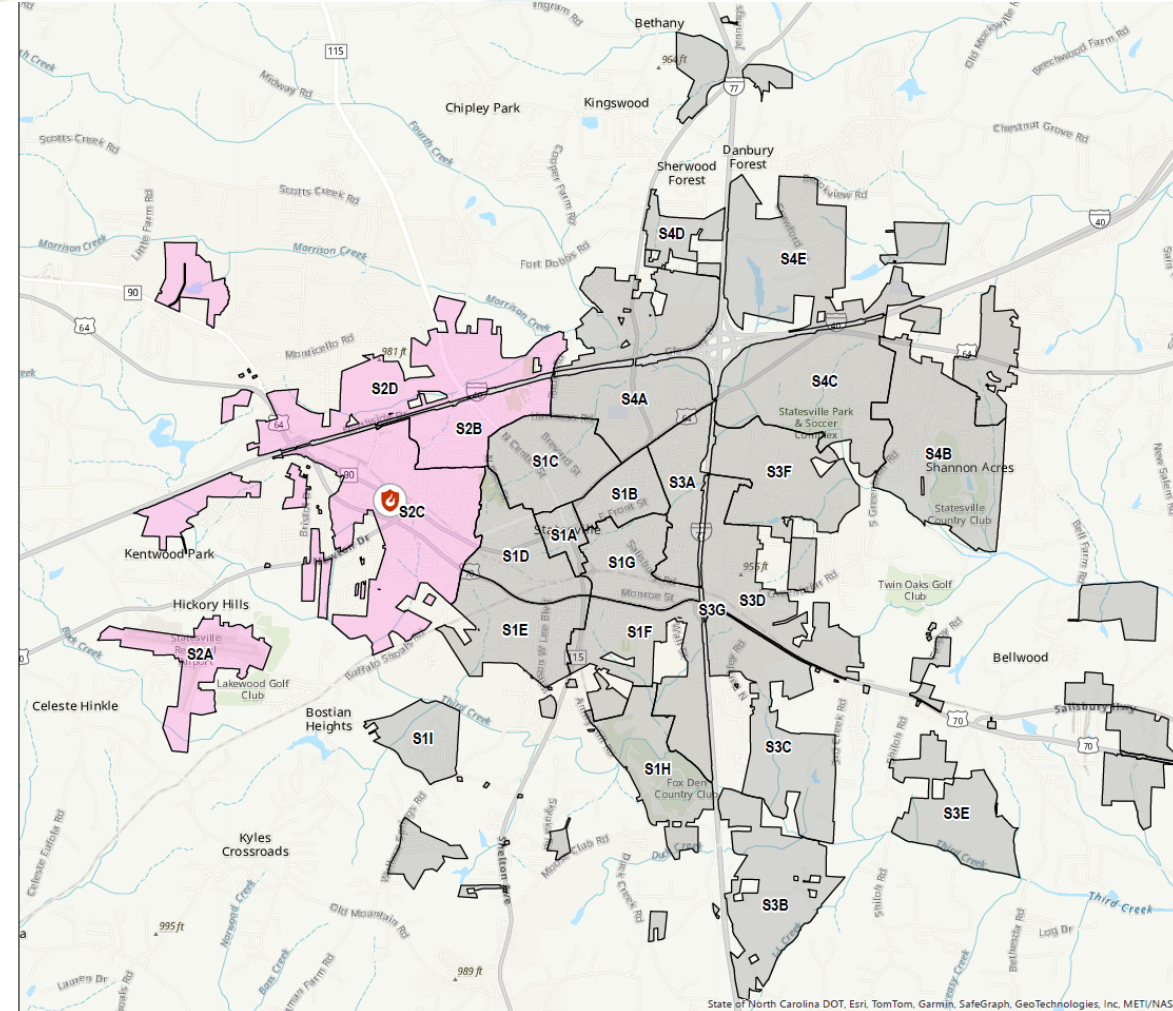
Station #3

Station #4



0 5,000 10,000 Feet

Scale: 1:1,220  
Source: City of Statesville Fire Department



*The City of Statesville Fire Department is a rapid response force committed to protecting the safety and well-being of the community from all hazards*



## Fire Station 2 Additional Apparatus



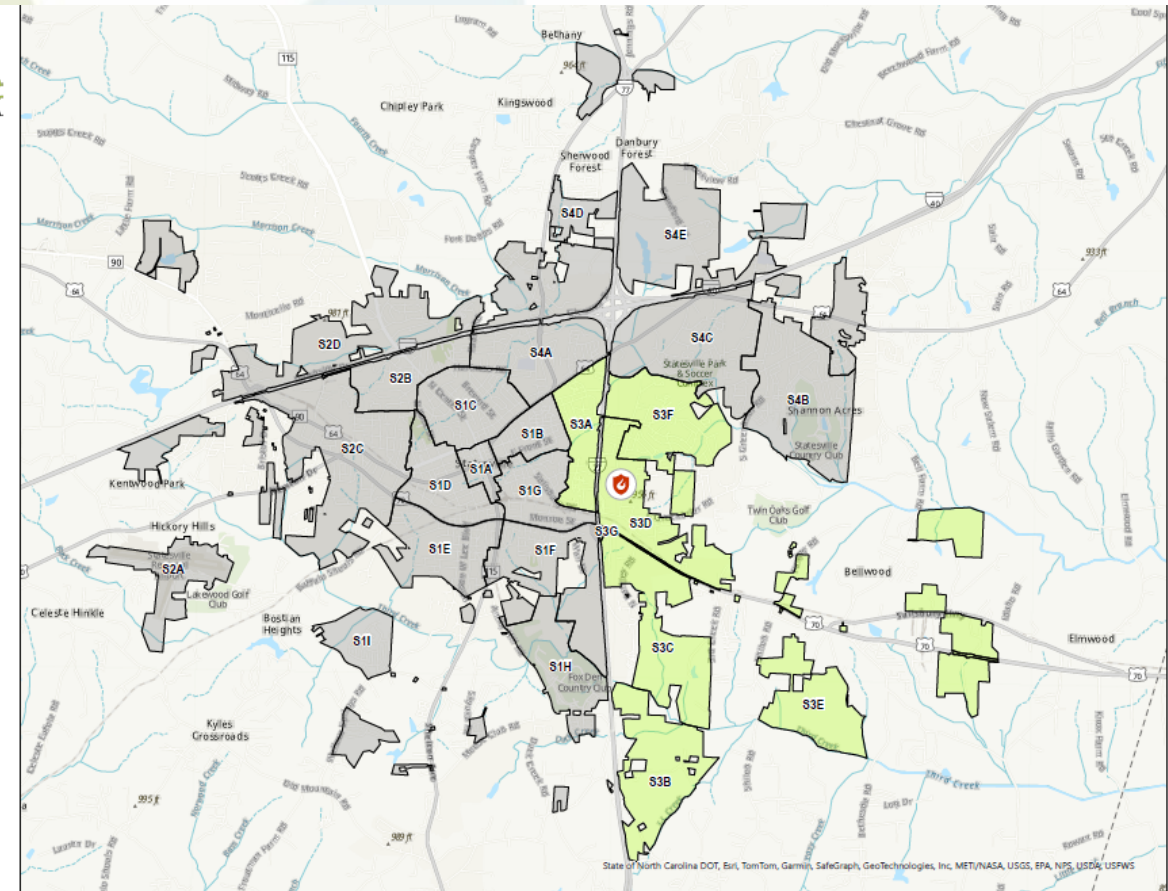
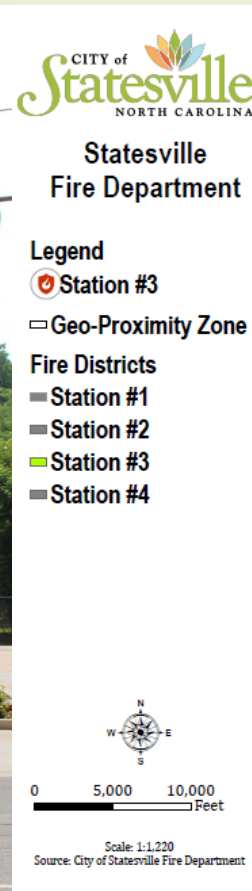
**RESERVE ENGINE**



**AIRCRAFT RESCUE &  
FIREFIGHTING (ARFF)**



# Fire Station 3 779 Eastside Drive Est. 1975



*The City of Statesville Fire Department is a rapid response force committed to protecting the safety and well-being of the community from all hazards*



# Fire Station 3 Apparatus



**SQUAD TRUCK**



**ENGINE 3**



**RESERVE ENGINE**


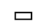






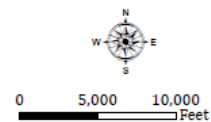
# Fire Station 4 115 Martin Lane Est. 2011



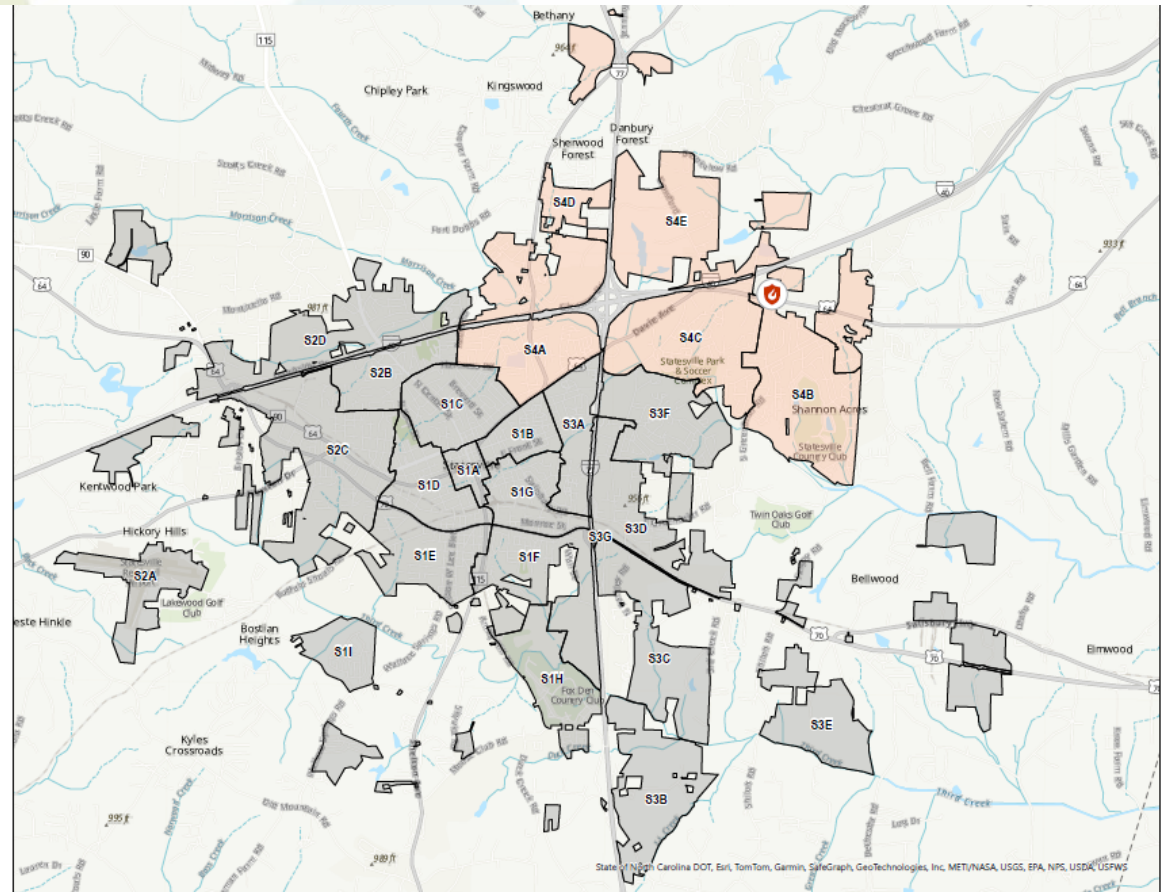
## Statesville Fire Department

### Legend

-  Station #4
-  Geo-Proximity Zone
- Fire Districts**
-  Station #1
-  Station #2
-  Station #3
-  Station #4



Scale: 1:1,220  
Source: City of Statesville Fire Department



*The City of Statesville Fire Department is a rapid response force committed to protecting the safety and well-being of the community from all hazards*



## Fire Station 4



**HAZMAT 1**



**ENGINE 4**



**RESERVE ENGINE**



## Fire Station 4



**SQUAD TRUCK**



**RESCUE**



**USAR 1**



# Additional Apparatus



**MARINE 1**




**VENT TRAILER**

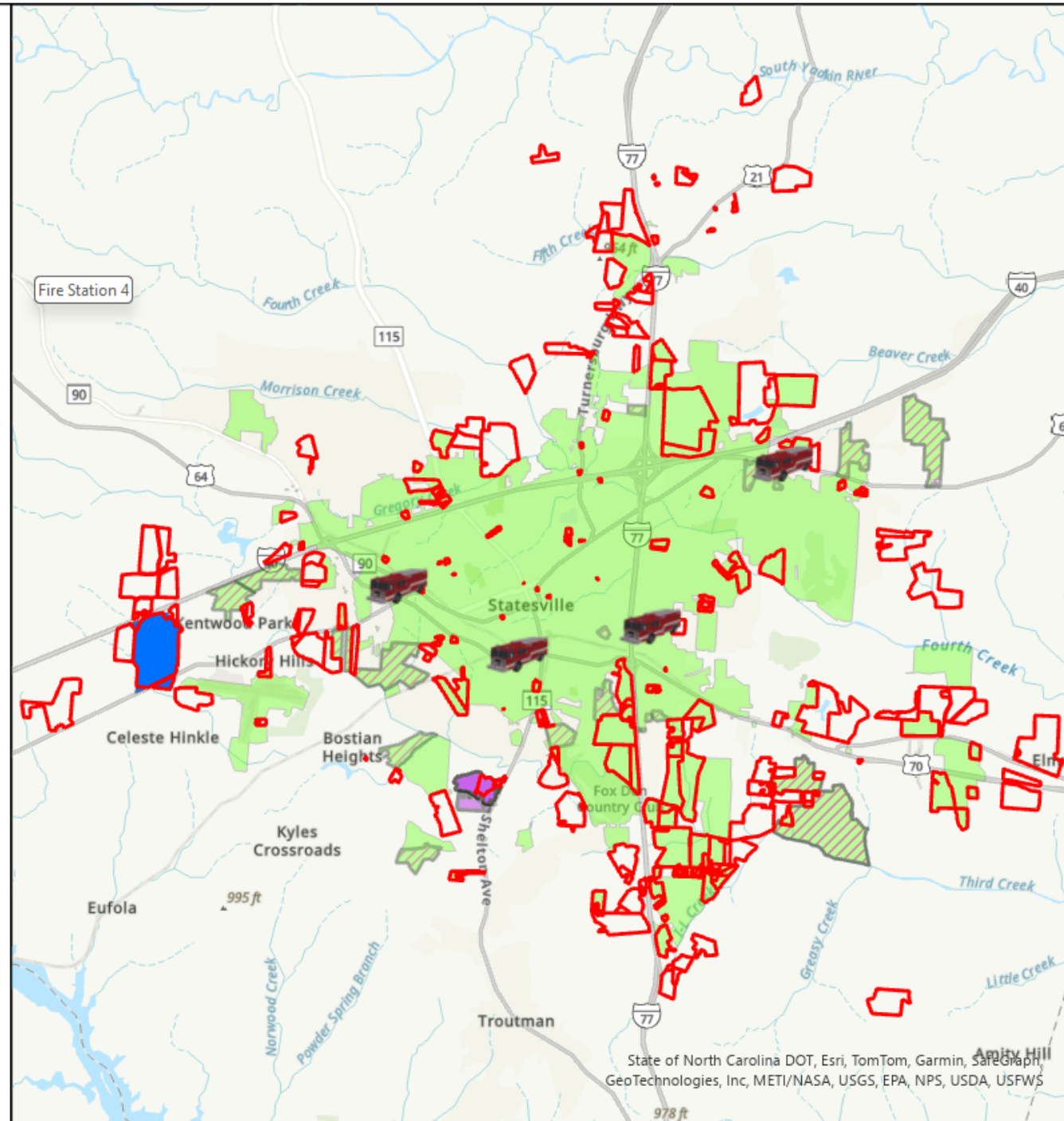


## Current City Limits & Future Developments

-  Fire Station
-  Development  
Inquiries
-  Development  
In Progress
-  Data Center
-  Proposed  
Residential  
Rezoning
-  Statesville  
City Limits



0 50 100 200 Miles  






# Alternative Funding Sources







## Sources of Alternative Funding:

- ❖ The SAFER Grant Funding program is a federal initiative designed to enhance the capabilities of fire departments and emergency response organizations by providing financial support for recruiting, hiring, and retaining firefighters. The program's primary goal is to ensure communities have adequate staffing levels to respond to emergency incidents efficiently and safely. Obtaining SAFER grant funding is a significant opportunity for communities to strengthen their fire and emergency response capabilities, improve public safety, and reduce the risk to residents and property during emergencies.
- ❖ The Assistance To Firefighters Grant (AFG) program is a competitive grant initiative to provide financial support to fire departments and non-affiliated EMS organizations. Its primary purpose is to assist these agencies in addressing critical needs, improving their ability to respond to emergencies, and ensuring the safety of first responders and the public.
- ❖ The Fire Prevention & Safety (FP&S) Grants program is a competitive federal grant initiative to provide financial support to fire departments and non-affiliated EMS organizations. The program primarily promotes fire prevention and safety through various projects, research, and public education efforts.

- ❖ SFD Applied For the SAFER Grant in 2007 through 2025
- ❖ SFD Was Awarded SAFER Grants in 2008, 2016, & 2017
- ❖ SFD Applied for AFG Grants in 2003 through 2025
- ❖ SFD was Awarded AFG Grants in 2004, 2005, 2010, 2012, & 2019

# OPERATIONS SERVICES PROVIDED BY RESPONSE CLASS



RESPONSE CLASS	2024	JANUARY – AUGUST 2025
 <b>FIRE</b>	2.48% (173)	12.85% (596)*
 <b>MEDICAL</b>	60.69% (4,230)	61.35% (2,845)*
 <b>HAZMAT</b>	1.80% (126)	2.48% (115)*
 <b>TECHNICAL RESCUE</b>	7.60% (530)	6.86% (318)*
 <b>AIRCRAFT</b>	00.01% (1)	00.11% (5)
 <b>OTHER</b>	27.39% (1,909)	16.35% (758)*
<b>TOTAL</b>	<b>6,969 CALLS</b>	<b>4,637 CALLS</b>

*\*The Other Response Class was revised effective 6/1/25 per a recommendation of the Center for Public Safety Excellence; data changes in the Response Classes are reflected above*



*The City of Statesville Fire Department is a rapid response force committed to protecting the safety and well-being of the community from all hazards*



# What is Heavy Rescue & Hazmat?

## HEAVY RESCUE

The North Carolina Heavy Rescue Certification is a state-level credential granted to emergency responders and rescue personnel who have demonstrated proficiency in managing and executing high-risk rescue operations. These operations typically involve intricate scenarios, such as vehicle extrication, urban search and rescue, trench and structural collapse, and other incidents where specialized skills, tools, and equipment are essential.

## HAZARDOUS MATERIALS (HAZMAT)

The Fire Department Hazmat Team is a highly trained and specialized unit responsible for responding to incidents involving hazardous materials, substances, and environmental emergencies. These incidents range from chemical spills and gas leaks to biological threats and radiological emergencies. The primary mission of the Hazmat Team is to protect the public, the environment, and first responders from the potential dangers associated with hazardous materials.

# Fire Marshal's Office



## COMPREHENSIVE FIRE SAFETY SERVICES

INVESTIGATIONS	PLAN REVIEW	INSPECTIONS	EDUCATION
Determining the origin and cause of fires and explosions with expertise.	Ensuring building plans comply with rigorous fire safety codes and standards.	Verifying ongoing compliance with fire and life safety standards across properties.	Proactive community outreach and training programs for fire prevention.



# Inspection Schedule



1

- Once Every Year  
Hazardous, Institutional, High Rise, Assemblies, & Residential

2

- Once Every Two Years  
Industrial and educational buildings (except public schools)

3

- Once Every Three Years  
Assembly occupancies less than 100, businesses, mercantile, storage, churches/synagogues and miscellaneous occupancies.

# **VIOLATION NOTICE**



## **Common**

Extension cords used for permanent wiring

Emergency lights or Exit lights not working

Fire extinguishers need annual service

Fire alarm or sprinkler system annual service needed

## **Uncommon**

Locked or blocked exits

Flammable liquid exceeding the amount allowed

Room in a church being used to store fireworks





## Fire & Safety Education: A Proactive Approach



### 1. Target Audiences

Reach schools, businesses, and community organizations.



### 2. Empowerment

Provide public knowledge to prevent fires.



### 3. Success Metrics

Track program participation and fire incident reduction.



*The City of Statesville Fire Department is a rapid response force committed to protecting the safety and well-being of the community from all hazards*





# Fire Extinguisher Training



A fire can start at any time, luckily operating a fire extinguisher is extremely simple. Just remember the **PASS** word when a fire occurs.



**Pull** the pin to unlock the lever



**Aim** at the base of the flames



**Squeeze** or press the handle



**Sweep** the nozzle from side to side at the base of the fire



*The City of Statesville Fire Department is a rapid response force committed to protecting the safety and well-being of the community from all hazards*



# CPR Training



American  
Heart  
Association.

**THAT HEART'S NOT  
GOING TO START ITSELF**  
DON'T BE AFRAID. GIVE CPR. SAVE A LIFE.

More than  
**350,000**

out-of-hospital cardiac arrests  
occur each year in the United States.

During cardiac arrest,  
immediate CPR can

**DOUBLE  
OR TRIPLE**

a person's chance  
of survival.



But currently, bystanders only perform CPR



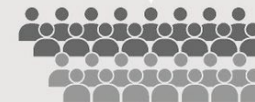
**46%** of the time.

In a nationwide online survey, respondents commented on why they did not  
perform CPR on someone in cardiac arrest despite having the opportunity to do so:

**31%** Afraid of legal  
ramifications

**24%** CPR is too  
complicated

**16%** I have not been trained  
to perform CPR



**28%** Afraid I might  
hurt the person

**18%** I did not feel confident  
performing the steps

**14%** I did not want to  
give rescue breaths

Source: 2016 Hands-Only CPR Research Tracking Study, American Heart Association. Published April 4, 2017

With hands-only CPR, it takes just

**2 STEPS  
TO SAVE A LIFE:**



**1.** Call  
9-1-1



**2.** Push hard  
& fast

Learn more at [heart.org/cpr](http://heart.org/cpr)

*The City of Statesville Fire Department is a rapid response force committed to protecting  
the safety and well-being of the community from all hazards*



# Steps to Safety Program



- Educate older adults about home fire and fall safety through group presentations and home visits.

- Promotes independence, collaboration, engagement, and empowerment



# Child Passenger Safety

Buckle up. It's the law

1

- **Correct Selection**

Choose the appropriate seat for the child's age and size.

2

- **Proper Installation**

Install according to manufacturer's instructions.

3

- **Proper Fit**

Ensure straps fit snugly for maximum protection.

Rear-facing seat  
Birth- 2 years  
and at least 20 pounds

Forward-facing seat  
2-4 years  
20-65 pounds

Booster seat  
4-8 years  
up to 4 feet, 9 inches tall

1. Define what “good service” from the Fire Department means to you?
2. What are your expectations of the Fire Department?



**TAKE THE 2025 SFD COMMUNITY SURVEY**



*We would like to*  
**HEAR from YOU!**



The Statesville Fire Department is asking our community for feedback. Take the Community Survey to tell us how we are doing.

**Questions?** Contact Samantha Moose at [smoose@statesvillenc.net](mailto:smoose@statesvillenc.net)

**Prefer a paper copy?** Visit the Statesville Fire Department Administration Office at 822 5th Street or call 704-832-3862 and leave your name and address, and we will mail a survey to you.



**Take the  
SURVEY  
ONLINE!**

Scan the QR code or visit  
[www.statesvillenc.net/fire-department](http://www.statesvillenc.net/fire-department)

**Thank you for  
taking the time  
to learn more  
about public  
safety**