

Water Line Standard Materials

For water line construction, the following specific materials or brands are considered acceptable for the City of Statesville's system.

Fire Hydrants:

All must have National Standard Threads, 5 inch valve openings, and open left (counter-clockwise).
American Flow Control (American Darling) B84B, or equal.

Water Valves:

All valves must open to the right (clockwise).
Quarter turn ball valves should be used on sizes up to 2 inch diameter water lines. Each valve shall have a flat head (such as a corp stop) for on/off operation.
Resilient wedge type valves must be used on sizes 2- $\frac{1}{2}$ to 10 inch diameter water lines. On 12 inch or larger, butterfly valves with double disc gates must be used.
Approved valves are American Flow Control (American Darling), Mueller and Clow.

Pipe Materials:

All major water main materials must conform to Sections 4, 13, or 14.
Water taps $\frac{3}{4}$ inch through 1 inch shall be type K soft copper line. Type L hard copper shall be used for 2 inch reduced at the valve for 1 $\frac{1}{2}$ " and 2". On all 2" lines there must be a $\frac{1}{4}$ turn ball valve in a traffic bearing box.

Water Meters:

All water meters shall be in cubic feet per second. The City can furnish meters (for cost) for application on lines to be dedicated to the City. Size will be determined according to the demand. All meters 3 inch and larger are to have ductile iron pipe to the City side of the meter.

Fittings shall be brass for $\frac{3}{4}$ inch through 1 inch and be flared or compression type. Fittings for 2 inch shall be compression only. Approved types are Ford, Mueller, and McDonald.

Approved meter boxes are Old Castle / Carson #1520-18 for 3/4" inch through 1 inch services and Old Castle / Carson #1730-18 for 2 inch services. All boxes must be 18 inches deep with plastic lid and cast iron readers. All prefabricated meter vault not installed by the City must be pre-approved by the City Engineer.

Tapping Sleeves: The following area approved standards:

American Flow Control (American Darling) - Mechanical Joint.
Mueller - Mechanical Joint
Romac - Stainless steel with ductile iron flange.

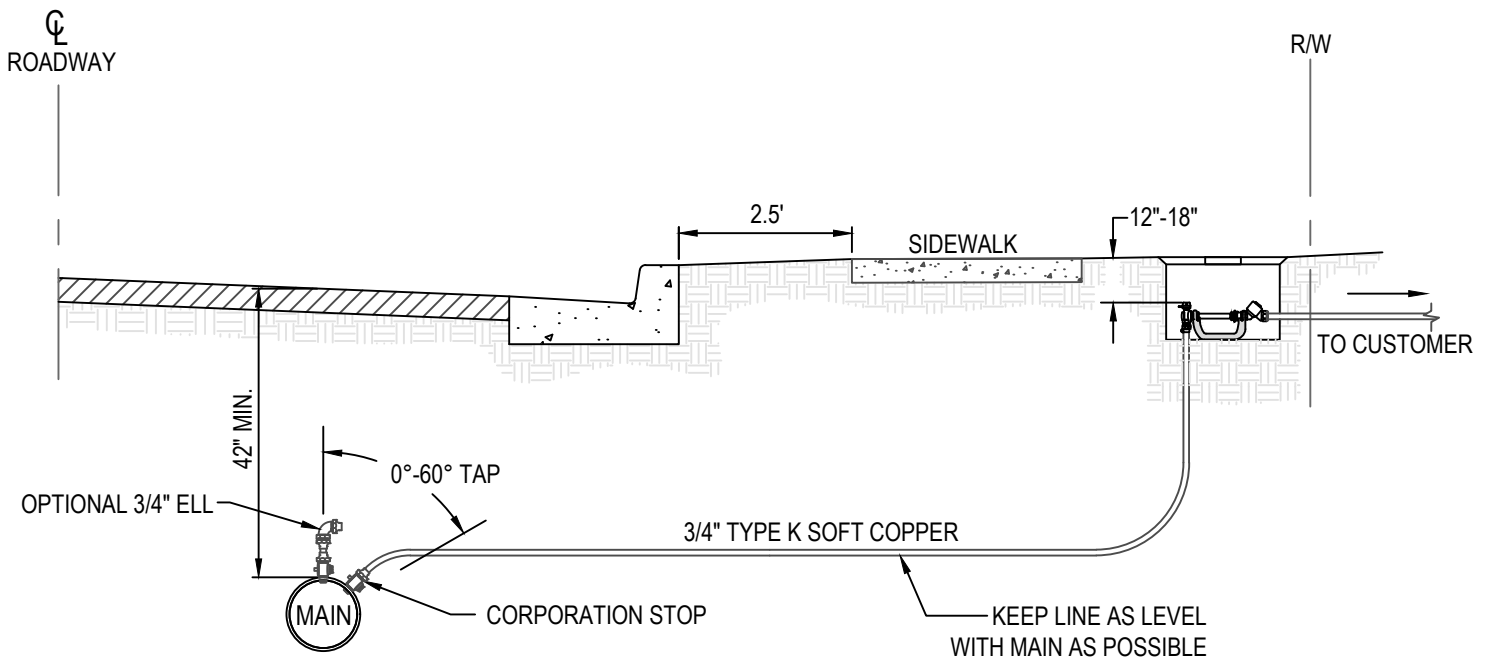


CITY OF STATESVILLE
PUBLIC WORKS DEPARTMENT

WATER LINES

Standard Materials

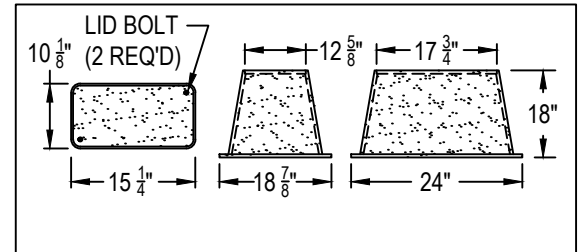
<u>DETAIL #</u>	<u>REVISED</u>
W-1	NOV 2025
<u>SCALE:</u>	<u>SHEET #</u>
N.T.S.	<u>1</u> OF <u>1</u>



Section View of Connection

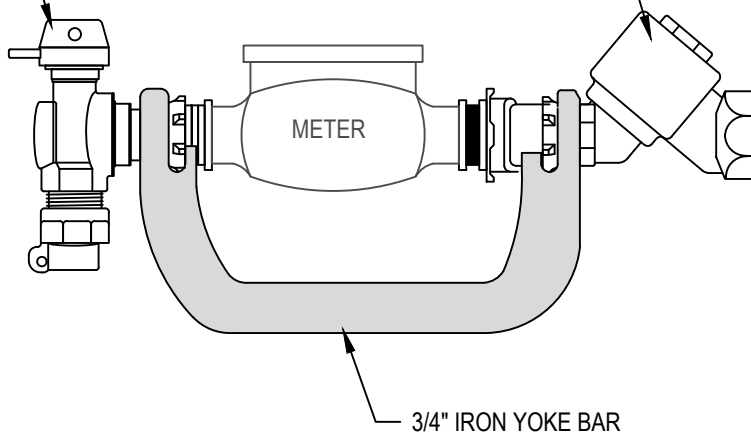
NOTE:

1. METER IS TO BE SET INSIDE OF THE R/W.
2. METER SHALL NOT BE LOCATED IN DRIVEWAY.
3. ALL PLASTIC METER BOXES SHALL HAVE HEAVY DUTY STRENGTH POLYMER CEMENT (PLASTIC) LIDS AS APPROVED BY THE CITY OF STATESVILLE.
4. ALL SERVICE LINES SHALL COMPLY WITH AWWA REGULATIONS C800.



ANGLE METER STOP
MUELLER H-14255

DUAL CHECK VALVE
MUELLER H14242
OR ANY DUAL CHECK
VALVE THAT IS A.S.S.E.
APPROVED



3/4" IRON YOKE BAR



CITY OF STATESVILLE

PUBLIC WORKS DEPARTMENT

WATER LINE

**3/4" - 1"
WATER SERVICE**

DETAIL #

W-2

REVISED

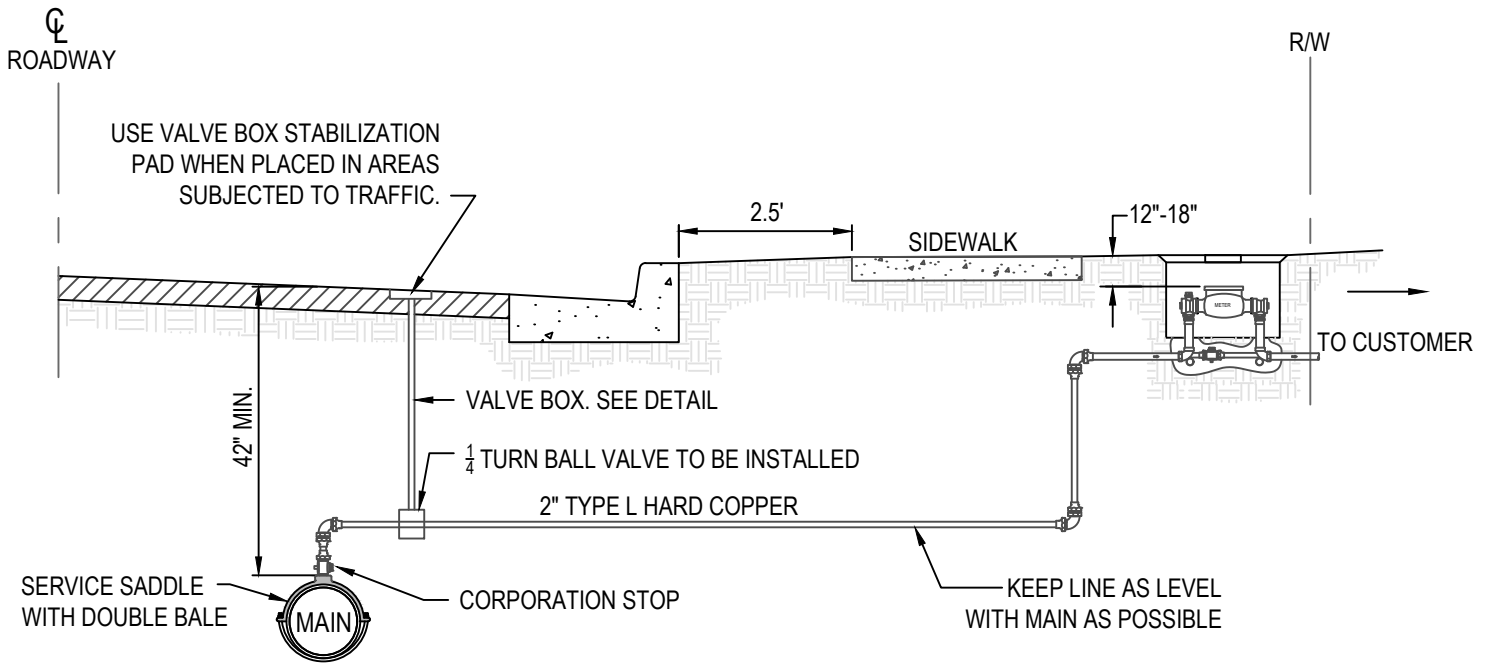
SEP 2019

SCALE:

N.T.S.

SHEET #

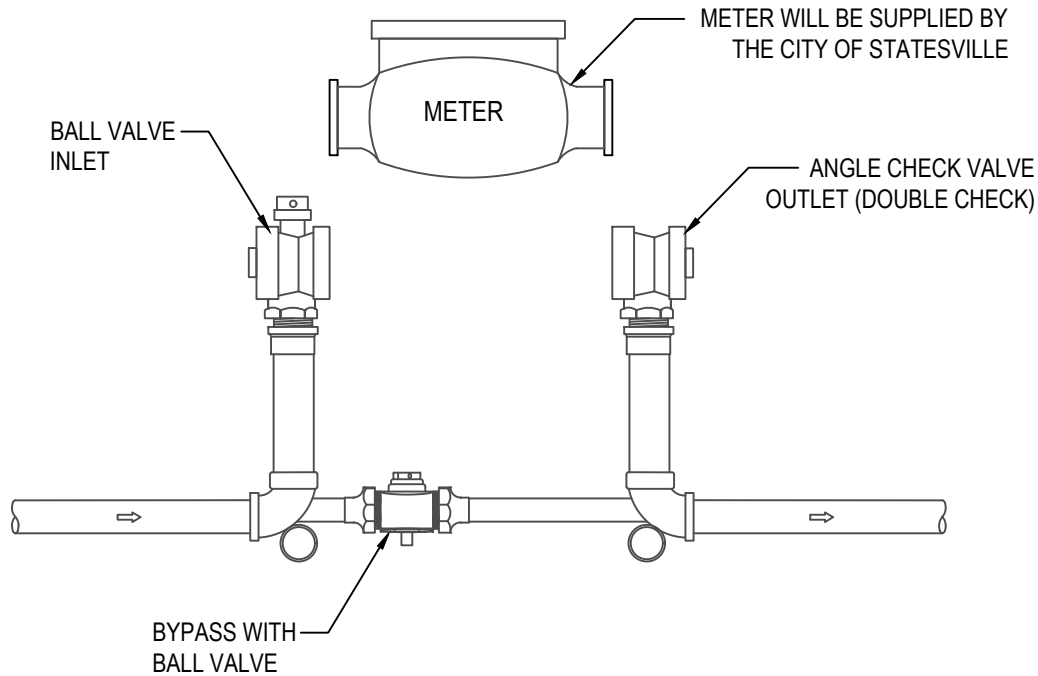
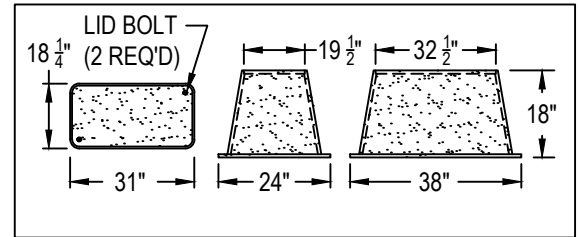
1 OF 1



Section View of Connection

NOTE:

1. METER IS TO BE SET INSIDE OF THE R/W.
2. METER SHALL NOT BE LOCATED IN DRIVEWAY.
3. ALL PLASTIC METER BOXES SHALL HAVE HEAVY DUTY STRENGTH POLYMER CEMENT (PLASTIC) LIDS AS APPROVED BY THE CITY OF STATESVILLE.
4. ALL SERVICE LINES SHALL COMPLY WITH AWWA REGULATIONS C800.



CITY OF STATESVILLE

PUBLIC WORKS DEPARTMENT

WATER LINE

2" WATER SERVICE

DETAIL #

W-3

REVISED

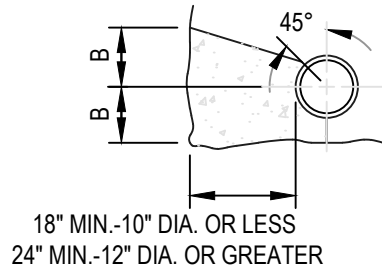
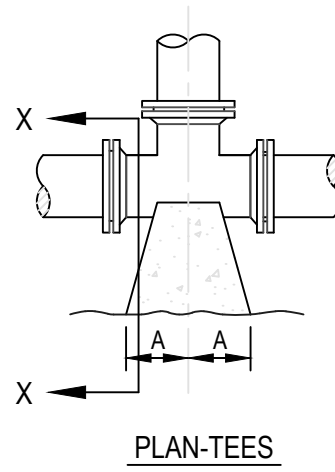
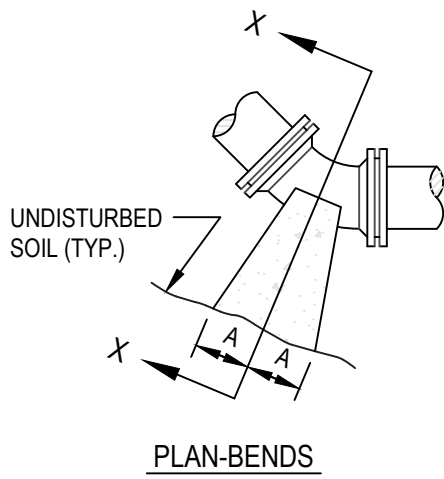
SEP 2019

SCALE:

N.T.S.

SHEET #

1 OF 1



PIPE SIZE	90° BEND		45° BEND		22-1/2° BEND		11-1/4° BEND		TEE	
	A	B	A	B	A	B	A	B	A	B
4"	18"	12"	10"	13"	7"	10"	7"	10"	12"	14"
6"	18"	12"	10"	13"	7"	10"	7"	10"	12"	14"
8"	24"	18"	13"	18"	10"	12"	10"	12"	16"	18"
10"	28"	22"	15"	22"	12"	15"	12"	15"	20"	22"
12"	32"	28"	19"	28"	14"	18"	14"	18"	22"	28"
16"	54"	38"	30"	36"	18"	36"	18"	36"	36"	42"

2000 PSF SOIL (SAND & GRAVEL WITH CLAY)

NOTES:

1. BASED ON 200 PSI STATIC PRESSURE PLUS AWWA WATER HAMMER ALLOWANCE.
2. ALL BEARING SURFACES TO BE CARRIED TO UNDISTURBED GROUND.
3. THRUST BLOCKS TO BE USED AT ALL LINES OPERATING UNDER PRESSURE.
4. KEEP ALL PIPING JOINTS CLEAR OF CONCRETE THRUST BLOCKS.



CITY OF STATESVILLE

PUBLIC WORKS DEPARTMENT

WATER LINE

Thrust Blocking

DETAIL #

W-4

REVISED

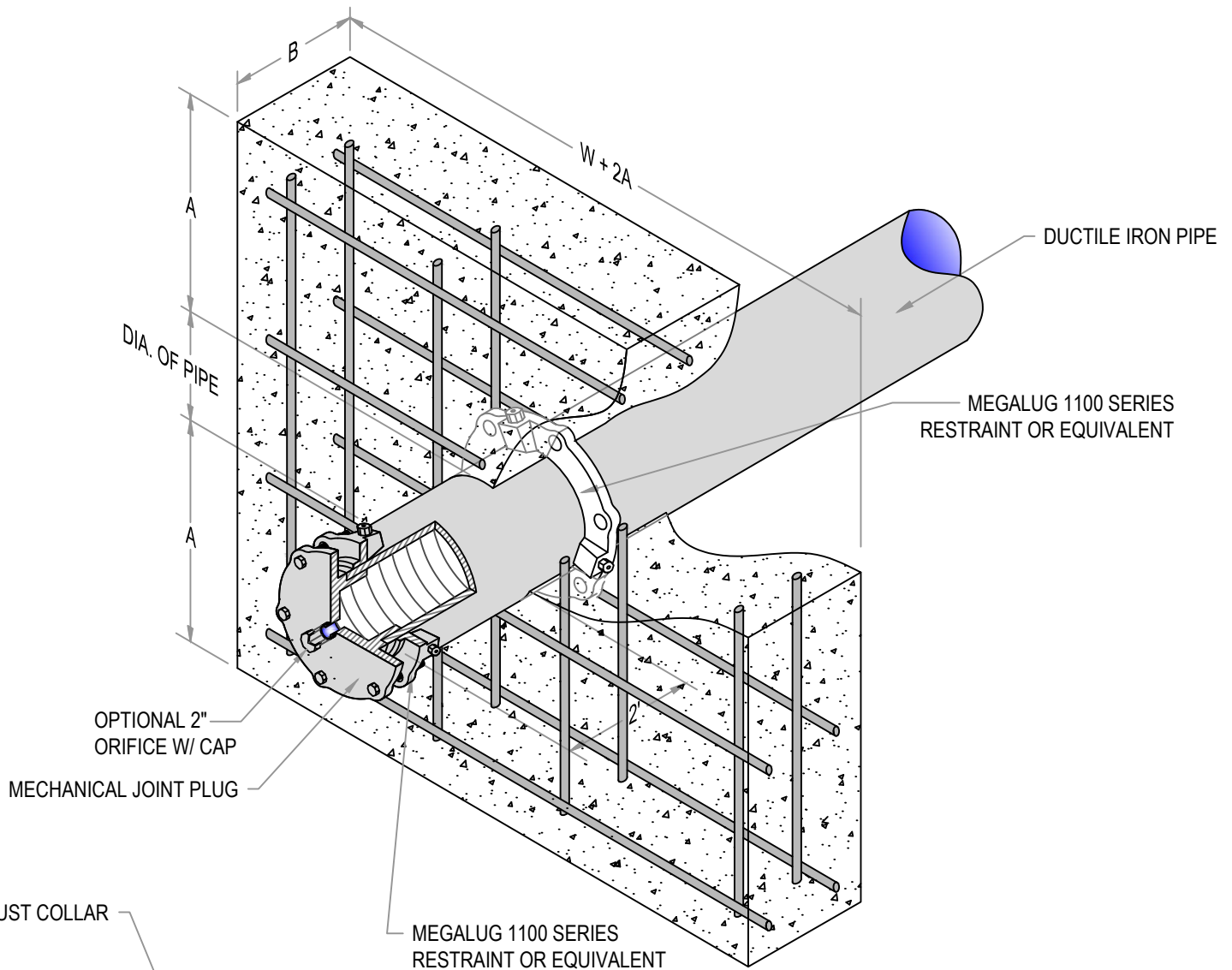
MAY 2010

SCALE:

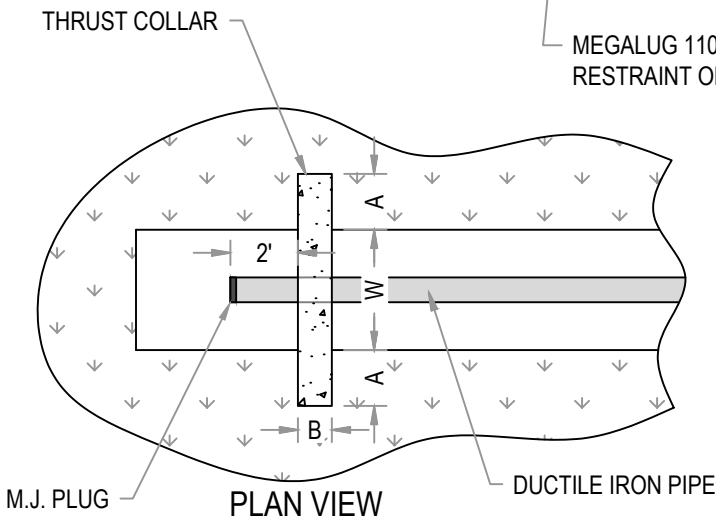
N.T.S.

SHEET #

1 OF 1



ISOMETRIC VIEW



PLAN VIEW

NOMINAL PIPE DIAMETER "D"	"A"	"B"	TRENCH WIDTH "W"	REINFORCING STEEL	
				BARS	SPACING (EACH WAY)
6" - 8"	12"	12"	26"	# 6	12"
10" - 12"	16"	16"	30"	# 6	6"
16"	21"	21"	36"	# 6	6"

NOTES:

1. POUR CONCRETE AGAINST FIRM, UNDISTURBED SOIL. FILL AGAINST COLLAR TO BE COMPACTED TO 90% PROCTOR FOR 6' ALONG THE PIPE ON BOTH SIDES OF THE COLLAR.
2. COMPLETELY BACKFILL AND COMPACT BEFORE PRESSURE TEST.
3. TRENCH WIDTHS ARE MAXIMUM FOR 10' EACH SIDE OF COLLAR.



CITY OF STATESVILLE

PUBLIC WORKS DEPARTMENT

WATER LINE

Thrust Collar & Dead End

DETAIL #

W-5

REVISED

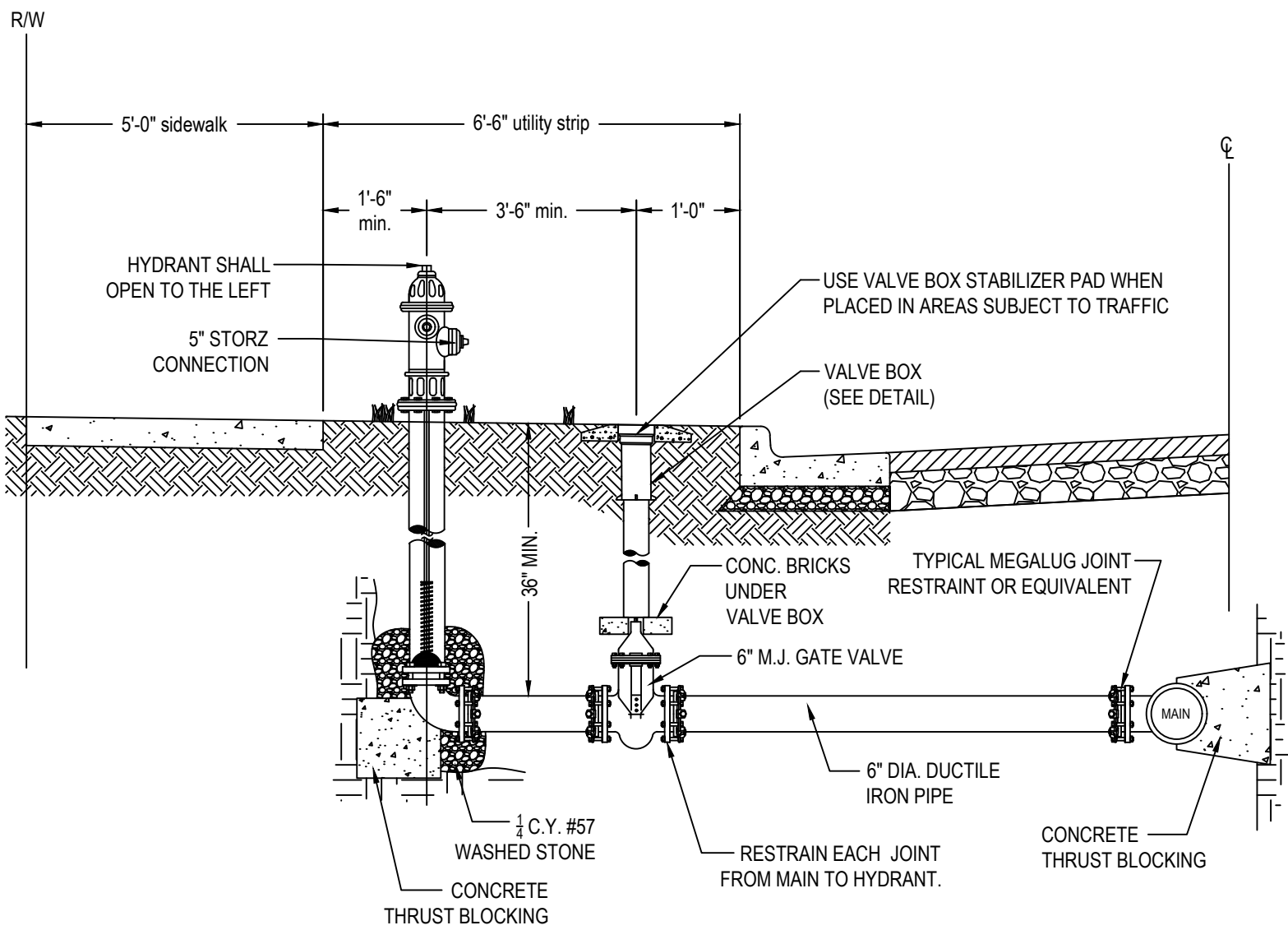
MAY 2010

SCALE:

N.T.S.

SHEET #

1 OF 1



NOTES:

1. SEE CITY STANDARD MATERIALS LIST FOR APPROVED HYDRANTS
2. DO NOT BLOCK HYDRANT DRAIN W/ BLOCKING
3. ALL HYDRANTS SHALL BE YELLOW IN COLOR.
4. HYDRANTS SHALL BE BEHIND SIDEWALK OR AS PER PLANS. (NO HYDRANTS IN SIDEWALKS AND/OR OVERHANGING CURB LINE. MAINTAIN 18" MIN. SEPARATION WITH HYDRANTS.)
5. ALL JOINTS FROM MAIN TO FIRE HYDRANT MUST BE RESTRAINED. USE MEGALUG OR EQUIVALENT JOINT RESTRAINT. CONTRACTOR MAY USE THREADED RODS AS AN OPTIONAL JOINT RESTRAINT. RODS MUST RUN CONTINUOUS FROM MAIN TO HYDRANT.
6. GATE VALVE SHALL OPEN TO THE RIGHT.
7. TRACER WIRE MUST BE ATTACHED AND LOCATE TAPE MUST BE 2 FT ABOVE PIPE.
8. CONTRACTOR SHALL NOT INSTALL HYDRANTS IN RADIUS OF CURB LINES.



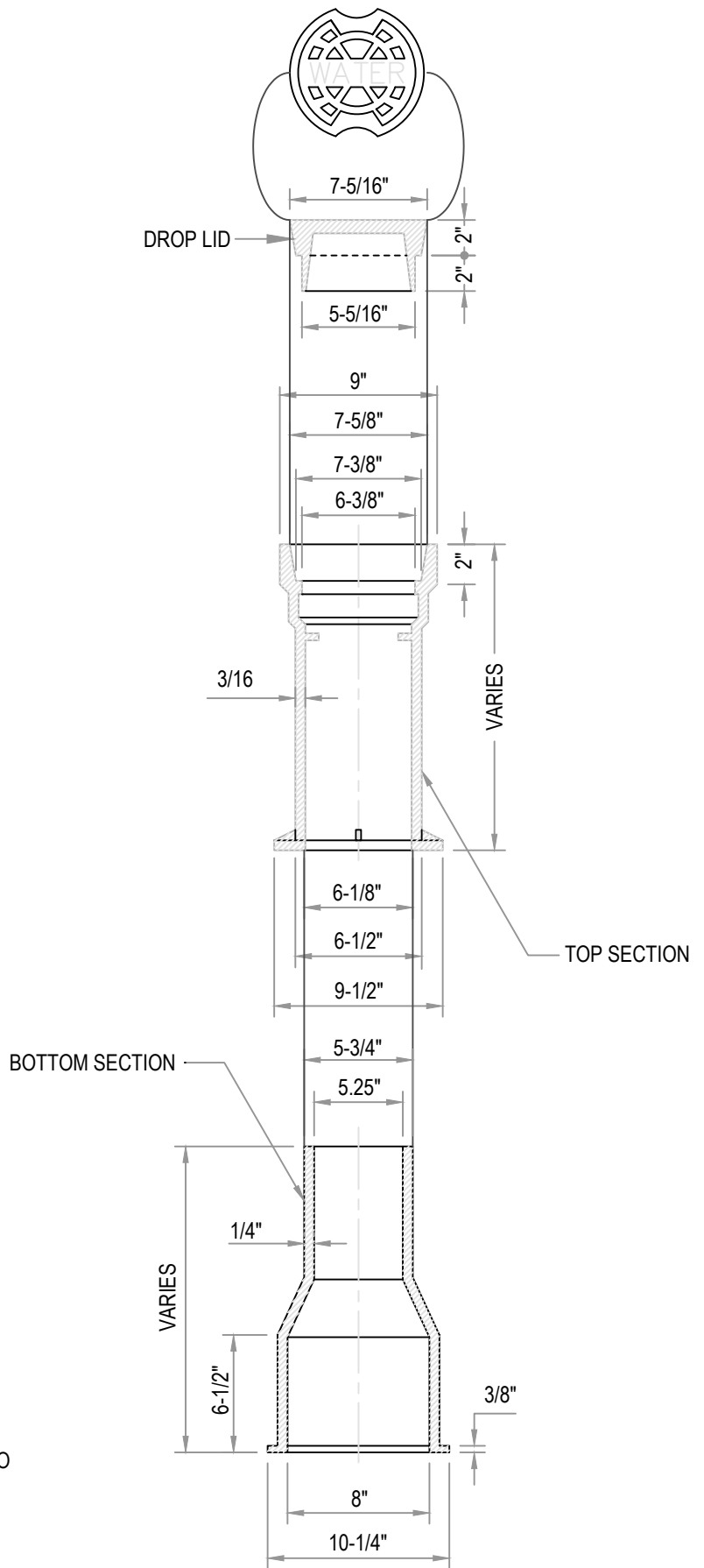
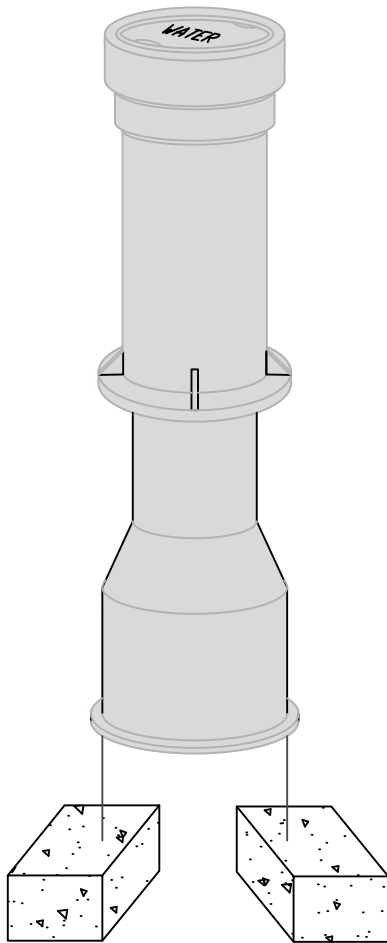
CITY OF STATESVILLE

PUBLIC WORKS DEPARTMENT

WATER LINE

Typ. Hydrant Connection

DETAIL #	REVISED
W-6	AUG 2024
SCALE:	SHEET #
N.T.S.	1 OF 1



NOTES:

1. BODY CASTING TO BE TYLER MANUFACTURE NO. 6855-SERIES, 5-1/4" SHAFT, SLIP TYPE, OR APPROVED EQUAL. SCREW TYPE NOT ACCEPTED
2. THE BOTTOM PIECE SHALL BE BEVELED AT THE LOWER END TO FIT AROUND THE STUFFING BOX GLAND AND SHALL REST ON TWO BRICKS UNDER EACH SIDE OF THE BASE.
3. FITS 4" THRU 12" VALVES



CITY OF STATESVILLE

PUBLIC WORKS DEPARTMENT

WATER LINE

Standard Valve Box

DETAIL #

W-7

REVISED

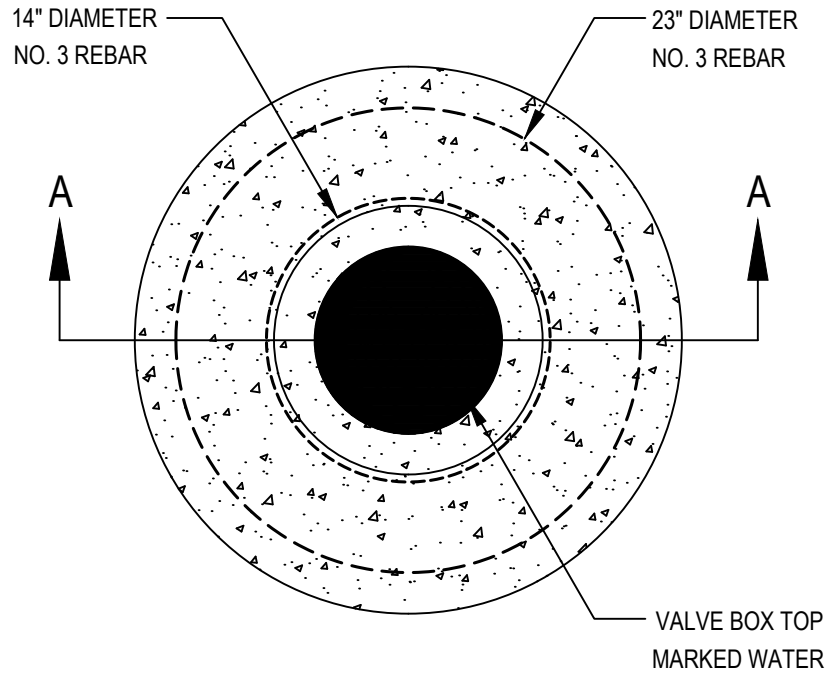
-

SCALE:

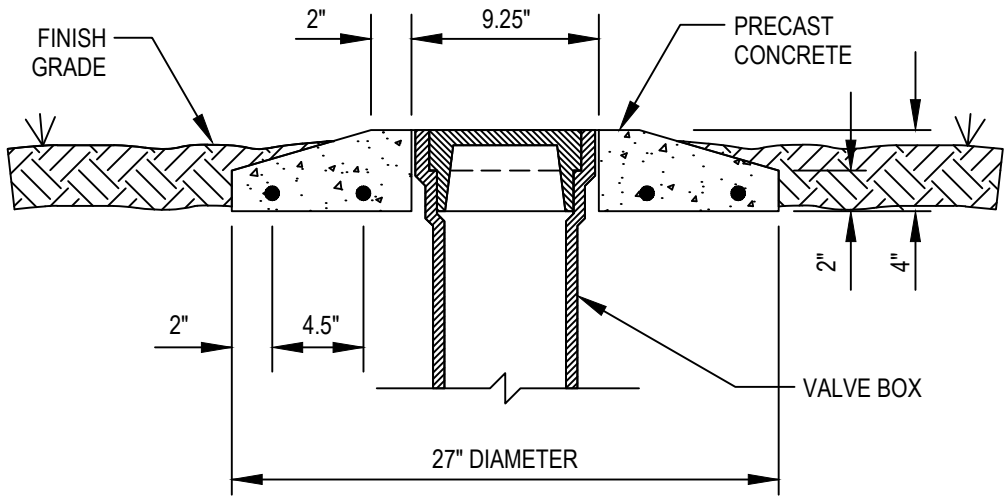
N.T.S.

SHEET #

1 OF 1



PLAN



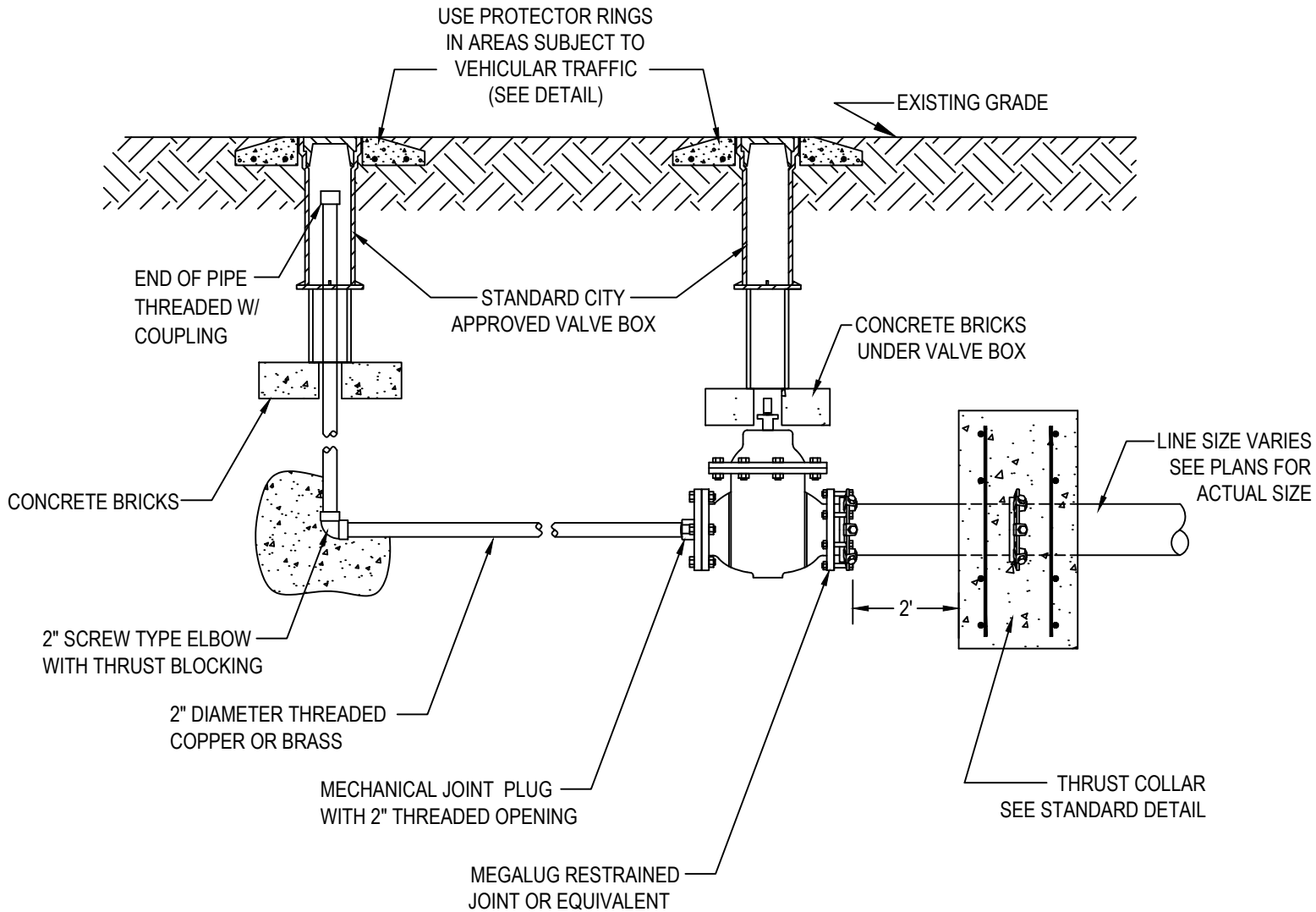
SECTION A-A



CITY OF STATESVILLE
PUBLIC WORKS DEPARTMENT

WATER LINE
**Valve Box Protector
(Stabilization Pad)**

DETAIL #	REVISED
W-8	SEP 2019
SCALE:	SHEET #
N.T.S.	<u>1</u> OF <u>1</u>



NOTES:

1. TWO INCH BLOW OFF VALVES ARE FOR TEMPORARY USE ONLY. USE A FIRE HYDRANT FOR PERMANENT BLOW OFF VALVE APPLICATIONS.



CITY OF STATESVILLE

PUBLIC WORKS DEPARTMENT

WATER LINE

**Temporary
2" Blow Off Valve**

DETAIL #

W-9

REVISED

MAY 2010

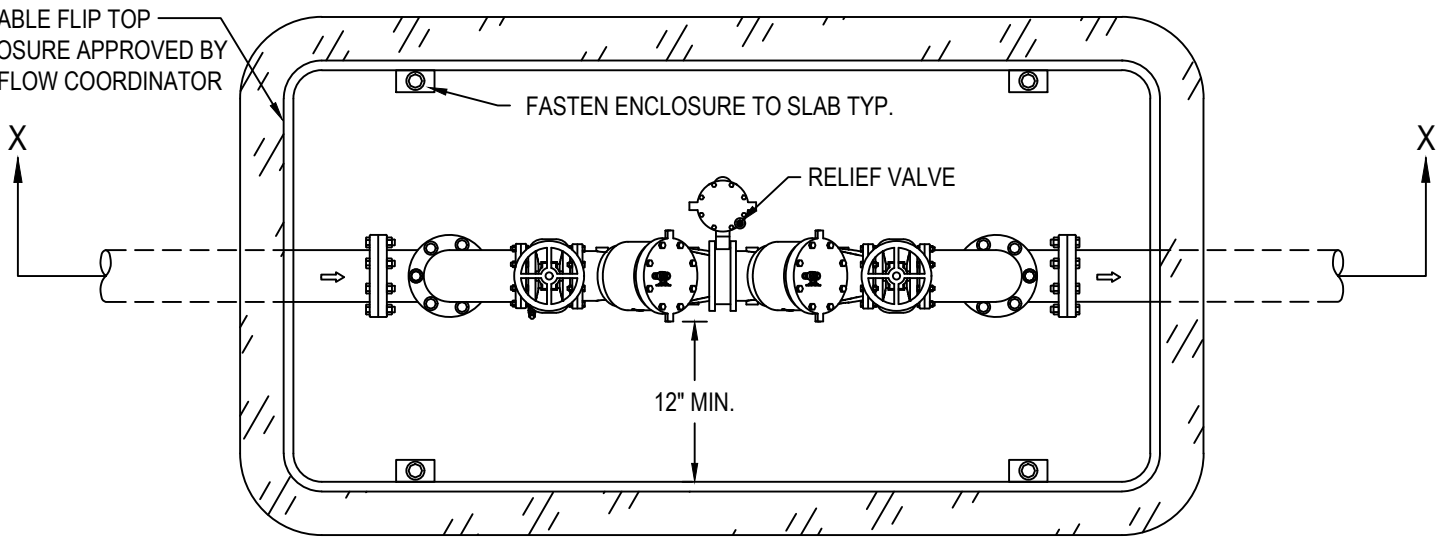
SCALE:

N.T.S.

SHEET #

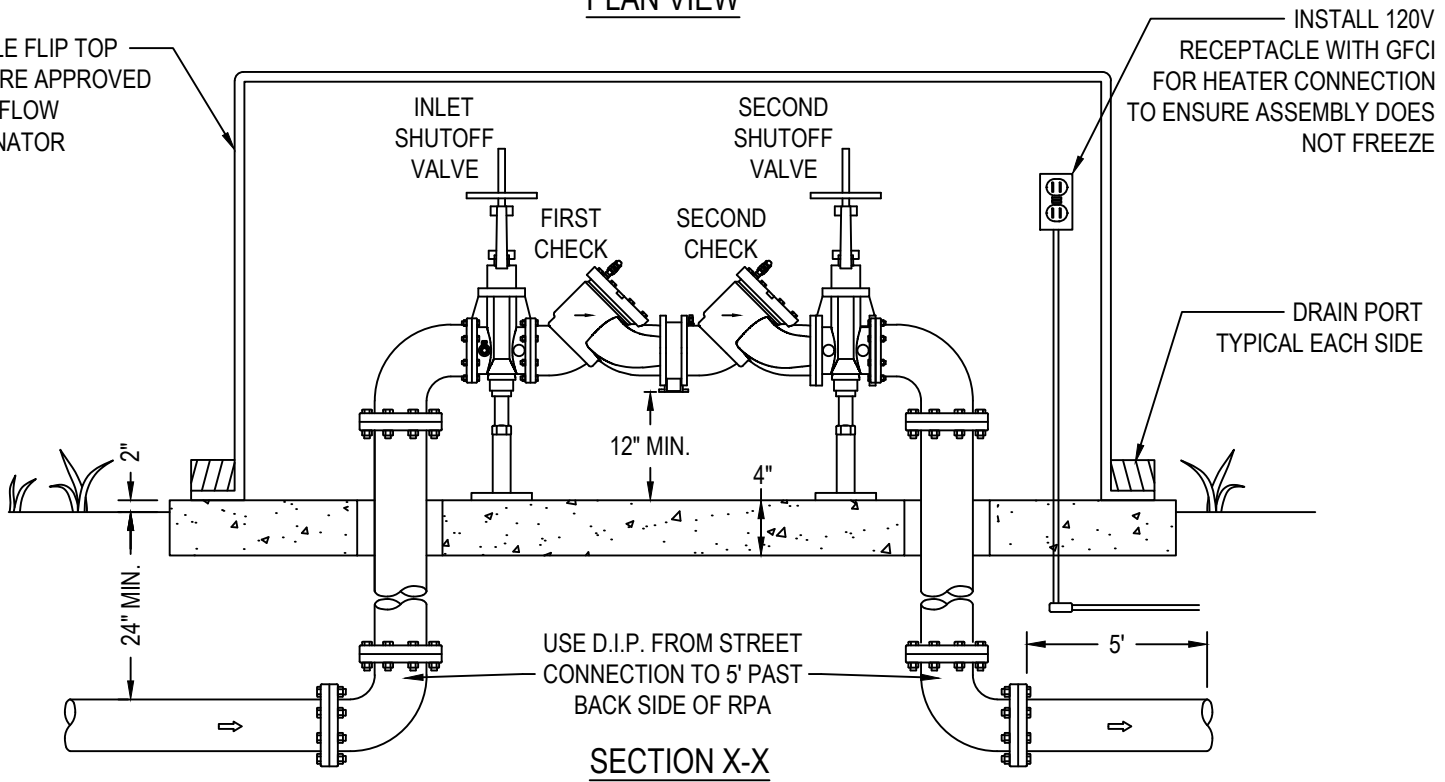
1 OF 1

LOCKABLE FLIP TOP ENCLOSURE APPROVED BY BACKFLOW COORDINATOR



PLAN VIEW

LOCKABLE FLIP TOP ENCLOSURE APPROVED BY BACKFLOW COORDINATOR



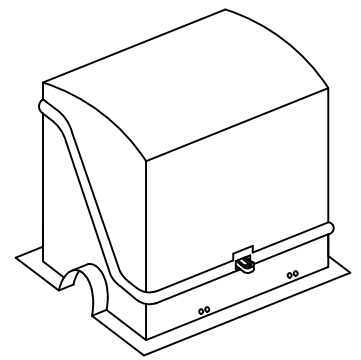
SECTION X-X

INSTALL 120V RECEPTACLE WITH GFCI FOR HEATER CONNECTION TO ENSURE ASSEMBLY DOES NOT FREEZE

DRAIN PORT TYPICAL EACH SIDE

NOTE:

1. AFTER INSTALLATION, ALL BACKFLOW ASSEMBLY'S WILL BE MAINTAINED BY THE CUSTOMER.
2. ENSURE ASSEMBLY WILL FIT WITHIN AN APPROVED ENCLOSURE. CHECK DIMENSIONS BEFORE ORDERING ENCLOSURE.
3. SLOPE CONCRETE OR POLY PAD TO DRAIN PORTS.
4. ASSEMBLY SHALL BE PLACED ON THE CUSTOMERS PROPERTY BEHIND THE METER AND INSTALLED WITH A 120V GFCI RECEPTACLE.
5. ASSEMBLY SHALL BE ACCESSIBLE BY CITY INSPECTORS AND CERTIFIED TESTERS.
6. DUCTILE IRON PIPE MUST BE INSTALLED FROM THE METER TO THE D.I. RISERS, AND 5' FROM THE BACK SIDE OF ASSEMBLY.



ISOMETRIC VIEW OF TYPICAL ENCLOSURE

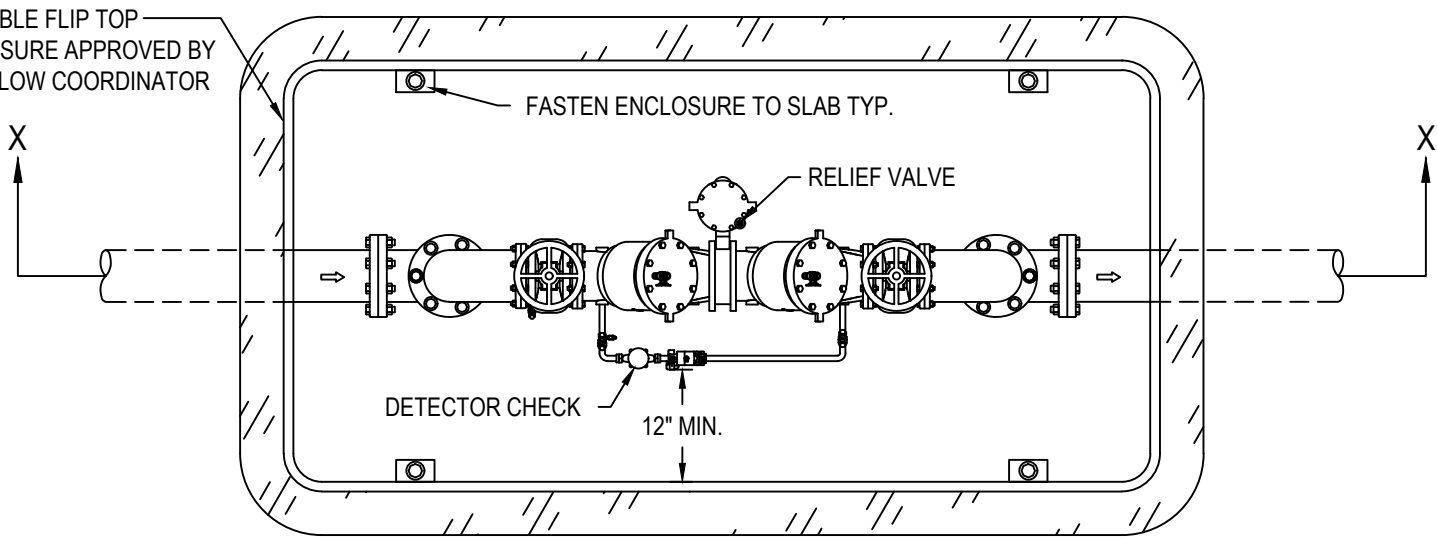


CITY OF STATESVILLE
PUBLIC WORKS DEPARTMENT

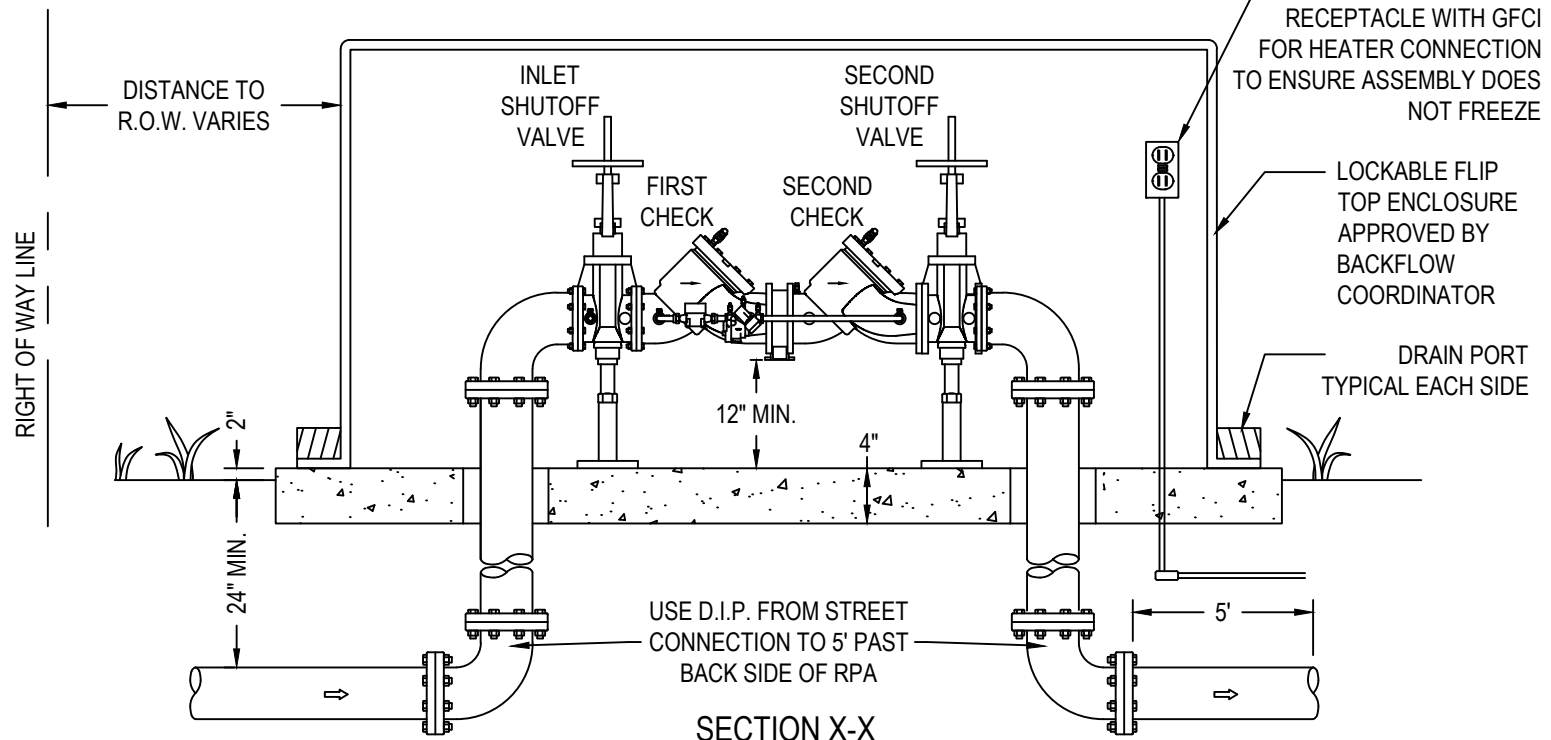
DOMESTIC WATER LINE
3" - 10" Reduced Pressure Assembly
(High Hazard Applications)

DETAIL #	REVISED
W-10D	NOV 2019
SCALE:	SHEET #
N.T.S.	1 OF 1

LOCKABLE FLIP TOP ENCLOSURE APPROVED BY BACKFLOW COORDINATOR



PLAN VIEW



SECTION X-X

INSTALL 120V RECEPTACLE WITH GFCI FOR HEATER CONNECTION TO ENSURE ASSEMBLY DOES NOT FREEZE

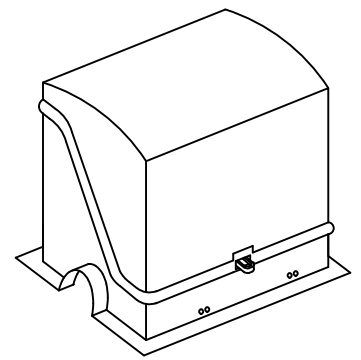
LOCKABLE FLIP TOP ENCLOSURE APPROVED BY BACKFLOW COORDINATOR

DRAIN PORT TYPICAL EACH SIDE

USE D.I.P. FROM STREET CONNECTION TO 5' PAST BACK SIDE OF RPA

NOTE:

1. AFTER INSTALLATION, ALL BACKFLOW ASSEMBLY'S SHALL BE MAINTAINED BY THE CUSTOMER AND TESTED ANNUALLY BY A CERTIFIED TESTER.
2. ENSURE ASSEMBLY WILL FIT WITHIN AN APPROVED ENCLOSURE. CHECK DIMENSIONS BEFORE ORDERING ENCLOSURE.
3. SLOPE CONCRETE OR POLY PAD TO DRAIN PORTS.
4. ASSEMBLY SHALL BE PLACED ON THE CUSTOMERS PROPERTY AND AS NEAR TO THE R.O.W. AS POSSIBLE. IT SHALL BE INSTALLED WITH A 120V GFCI RECEPTACLE.
5. ASSEMBLY SHALL BE ACCESSIBLE BY CITY INSPECTORS AND CERTIFIED TESTERS.
6. NO GALVANIZED OR PLASTIC PIPE OR FITTINGS.
7. DUCTILE IRON MUST BE INSTALLED FROM THE MAIN TO THE RISERS, AND 5' FROM THE BACK SIDE OF THE REDUCED PRESSURE ASSEMBLY.
8. TAMPER SWITCHES WITH ALARM SHALL BE SUPPLIED ON THE DEVICE WHEN USED FOR FIRE LINE APPLICATIONS AS PER NC FIRE CODE.
9. DETECTOR METER MUST BE NICOR READY AND READ IN CUBIC FEET.



ISOMETRIC VIEW OF TYPICAL ENCLOSURE



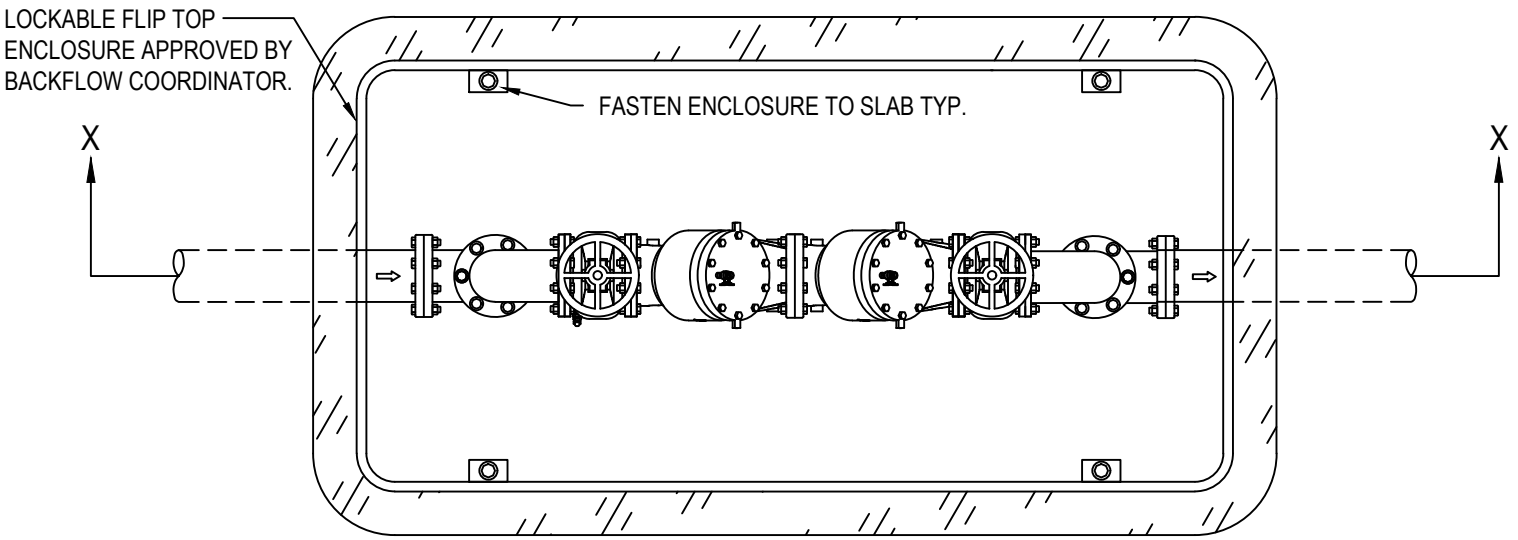
CITY OF STATESVILLE

PUBLIC WORKS DEPARTMENT

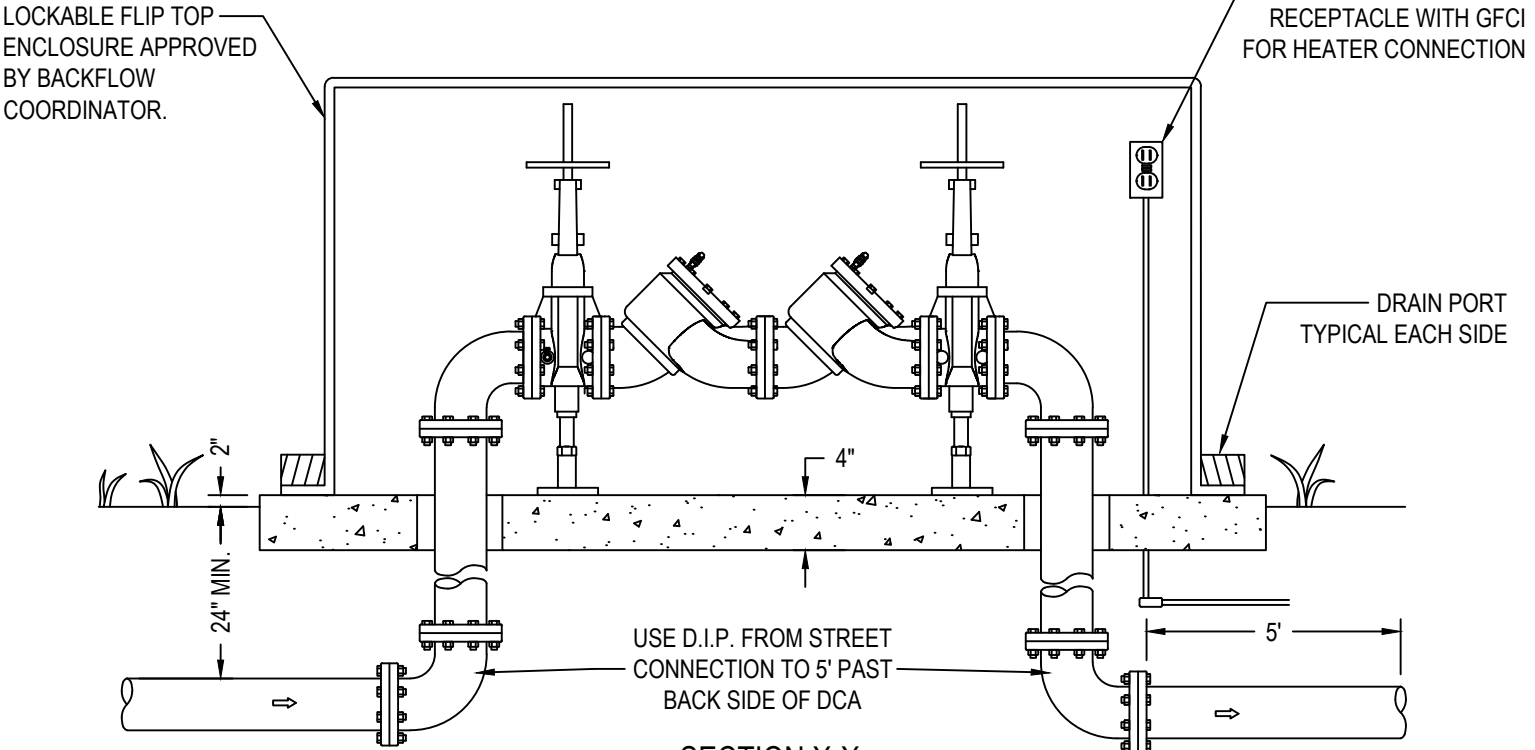
FIRE LINE

**3" - 10" Reduced Pressure
Detector Assembly
(High Hazard Applications)**

DETAIL #	REVISED
W-10F	SEP 2019
SCALE:	SHEET #
N.T.S.	1 OF 1



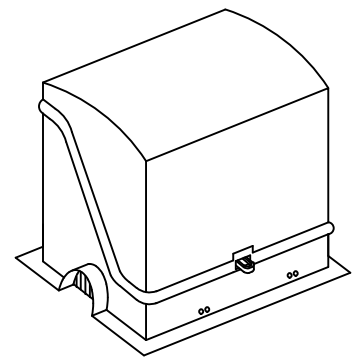
PLAN VIEW



SECTION X-X

NOTE:

1. AFTER INSTALLATION, ALL BACKFLOW ASSEMBLY'S WILL BE MAINTAINED BY THE CUSTOMER.
2. ENSURE ASSEMBLY WILL FIT WITHIN AN APPROVED ENCLOSURE. CHECK DIMENSIONS BEFORE ORDERING ENCLOSURE.
3. SLOPE CONCRETE OR POLY PAD TO DRAIN PORTS.
4. ASSEMBLY SHALL BE PLACED ON THE CUSTOMERS PROPERTY BEHIND THE METER AND INSTALLED WITH A 120V GFCI RECEPTACLE.
5. ASSEMBLY SHALL BE ACCESSIBLE BY CITY INSPECTORS AND CERTIFIED TESTERS.
6. DUCTILE IRON PIPE MUST BE INSTALLED FROM THE METER TO THE D.I. RISERS, AND 5' FROM THE BACK SIDE OF ASSEMBLY.



ISOMETRIC VIEW OF TYPICAL ENCLOSURE



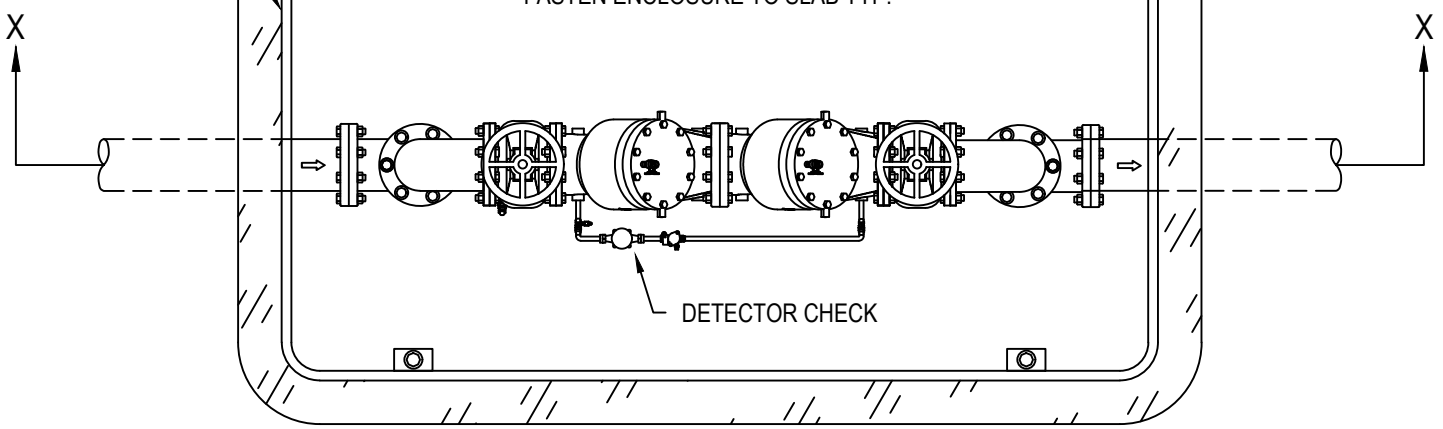
CITY OF STATESVILLE
PUBLIC WORKS DEPARTMENT

DOMESTIC WATER LINE

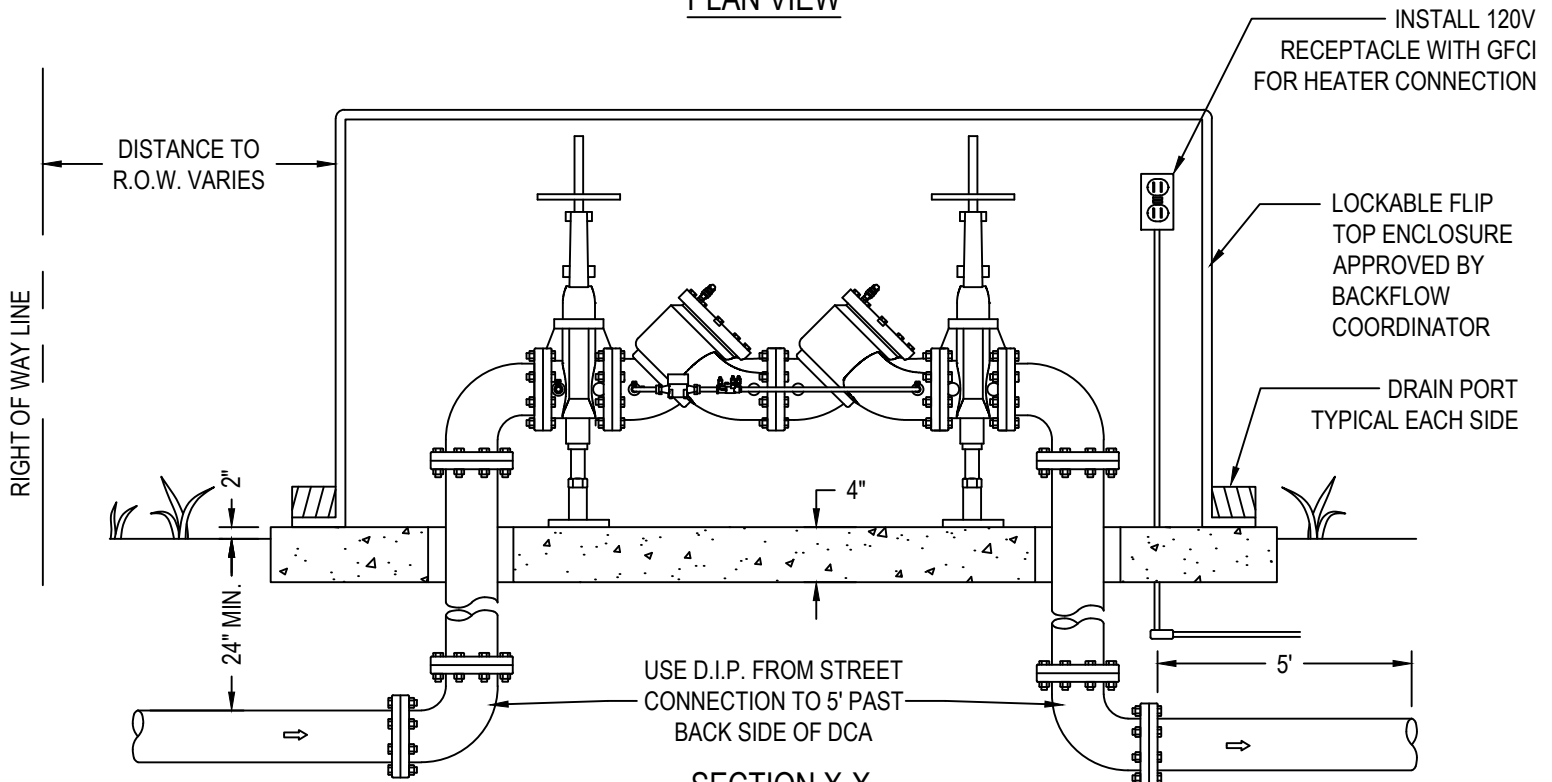
**3" - 10" DC Assembly
(Above Ground)**

DETAIL #	REVISED
W-11D	NOV 2019
SCALE:	SHEET #
N.T.S.	1 OF 1

LOCKABLE FLIP TOP ENCLOSURE APPROVED BY BACKFLOW COORDINATOR.



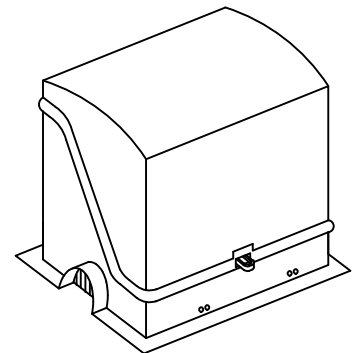
PLAN VIEW



SECTION X-X

NOTE:

1. AFTER INSTALLATION, ALL BACKFLOW ASSEMBLY'S SHALL BE MAINTAINED BY THE CUSTOMER AND TESTED ANNUALLY BY A CERTIFIED TESTER.
2. ENSURE ASSEMBLY WILL FIT WITHIN AN APPROVED ENCLOSURE. CHECK DIMENSIONS BEFORE ORDERING ENCLOSURE.
3. SLOPE CONCRETE OR POLY PAD TO DRAIN PORTS.
4. ASSEMBLY SHALL BE PLACED ON THE CUSTOMERS PROPERTY AND AS NEAR TO THE R.O.W. AS POSSIBLE. IT SHALL BE INSTALLED WITH A 120V GFCI RECEPTACLE.
5. ASSEMBLY SHALL BE ACCESSIBLE BY CITY INSPECTORS AND CERTIFIED TESTERS.
6. NO GALVANIZED OR PLASTIC PIPE OR FITTINGS.
7. DUCTILE IRON MUST BE INSTALLED FROM THE MAIN TO THE RISERS, AND 5' FROM THE BACK SIDE OF THE DC ASSEMBLY.
8. TAMPER SWITCHES WITH ALARM SHALL BE SUPPLIED ON THE DEVICE WHEN USED FOR FIRE LINE APPLICATIONS AS PER NC FIRE CODE.
9. DETECTOR METER MUST BE NICOR READY AND READ IN CUBIC FEET.



ISOMETRIC VIEW OF TYPICAL ENCLOSURE



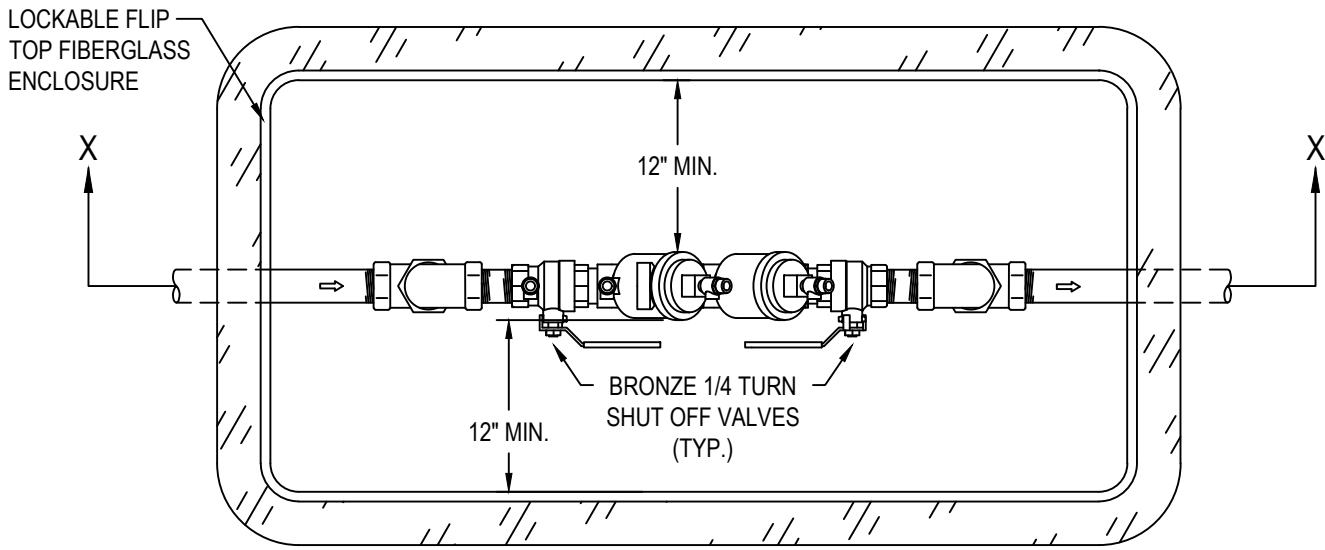
CITY OF STATESVILLE

PUBLIC WORKS DEPARTMENT

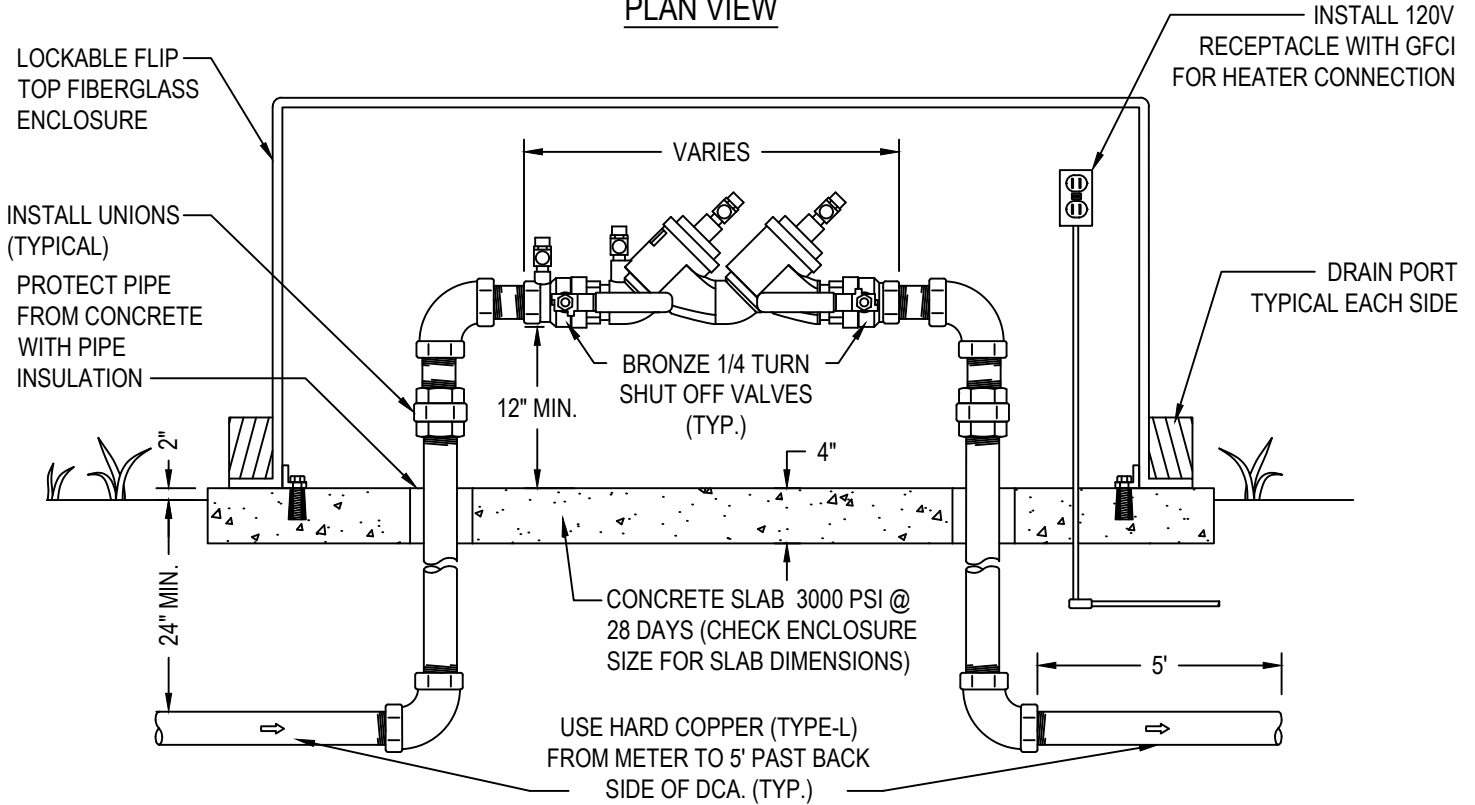
FIRE LINE

**3" - 10" DC Detector
Assembly (Above Ground)**

DETAIL #	REVISED
W-11F	NOV 2019
SCALE:	SHEET #
N.T.S.	1 OF 1



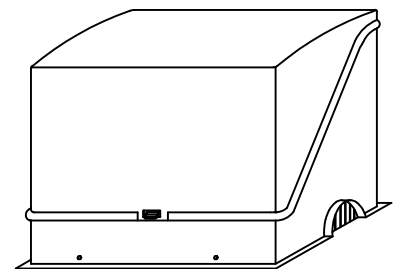
PLAN VIEW



SECTION X-X

NOTE:

1. AFTER INSTALLATION, ALL BACKFLOW ASSEMBLIES SHALL BE MAINTAINED BY THE CUSTOMER AND TESTED ANNUALLY BY A CERTIFIED TESTER.
2. ENSURE ASSEMBLY WILL FIT WITHIN AN APPROVED ENCLOSURE. CHECK DIMENSIONS BEFORE ORDERING ENCLOSURE.
3. SLOPE CONCRETE/ OR POLY PAD TO DRAIN PORTS.
4. ASSEMBLY SHALL BE PLACED ON CUSTOMER'S PROPERTY BEHIND THE METER BOX AND INSTALLED WITH A 120V GFCI RECEPTACLE.
5. ASSEMBLY SHALL BE ACCESSIBLE BY CITY INSPECTORS AND CERTIFIED TESTERS.
6. NO GALVANIZED OR PLASTIC PIPE OR FITTINGS.
7. TYPE-L HARD COPPER MUST BE INSTALLED FROM THE METER TO THE COPPER RISERS AND 5' FROM THE BACK SIDE, AND THE RISERS MUST HAVE UNIONS INSTALLED ON EACH SIDE.



ISOMETRIC VIEW OF TYPICAL ENCLOSURE



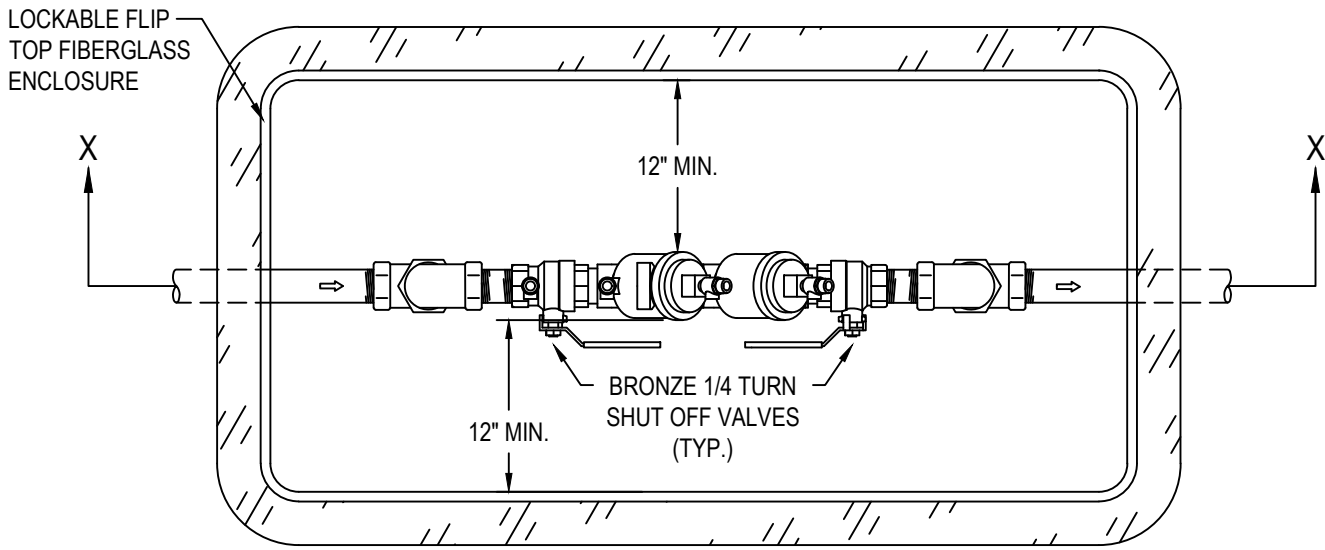
CITY OF STATESVILLE

PUBLIC WORKS DEPARTMENT

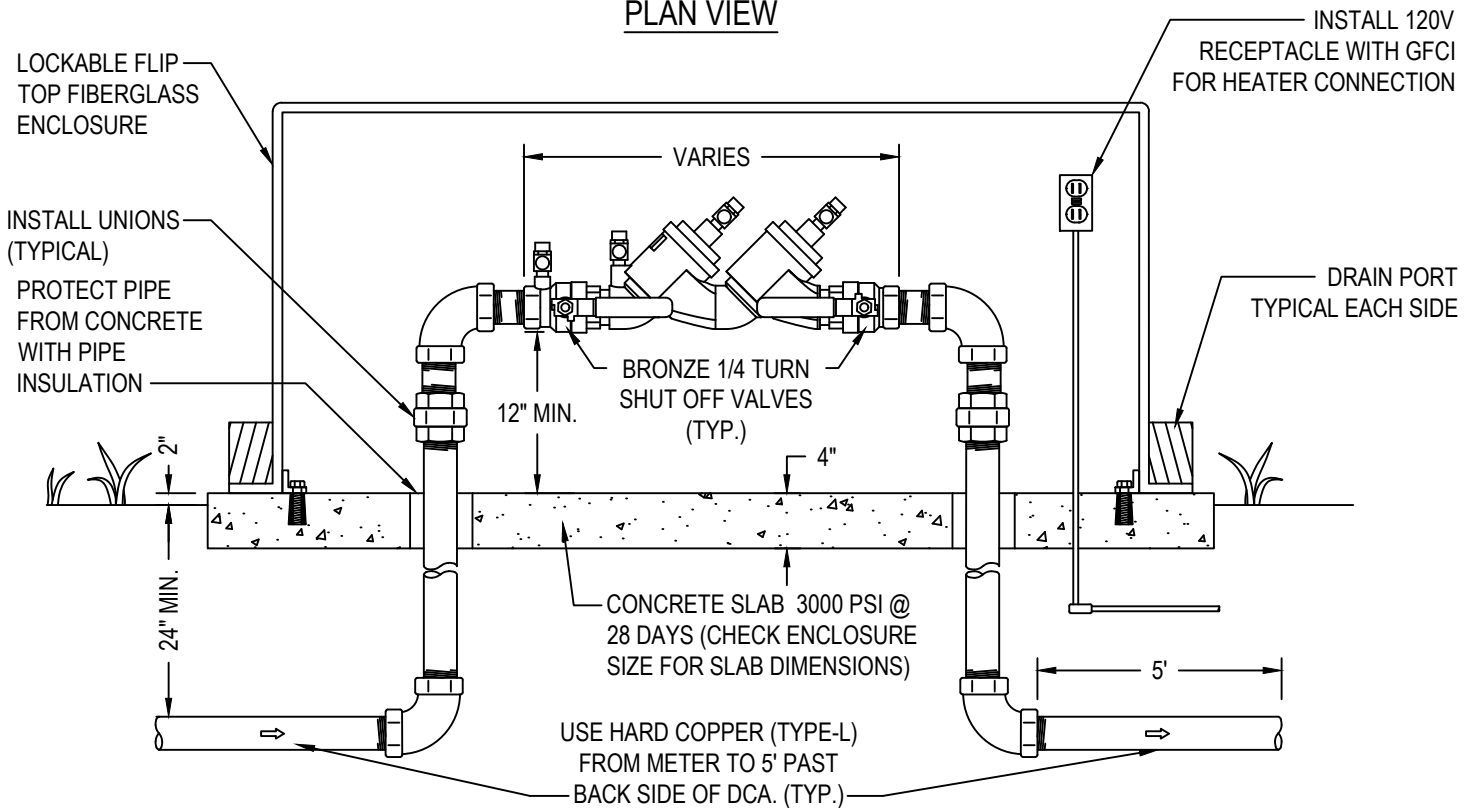
WATER LINE

**3/4" to 1-1/2" DC
Assembly (Above Ground)**

DETAIL #	REVISED
W-12A	NOV 2019
SCALE:	SHEET #
N.T.S.	1 OF 1



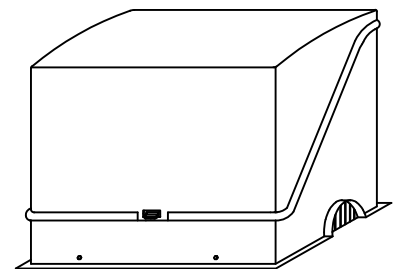
PLAN VIEW



SECTION X-X

NOTE:

1. AFTER INSTALLATION, ALL BACKFLOW ASSEMBLIES SHALL BE MAINTAINED BY THE CUSTOMER AND TESTED ANNUALLY BY A CERTIFIED TESTER.
2. ENSURE ASSEMBLY WILL FIT WITHIN AN APPROVED ENCLOSURE. CHECK DIMENSIONS BEFORE ORDERING ENCLOSURE.
3. SLOPE CONCRETE/ OR POLY PAD TO DRAIN PORTS.
4. ASSEMBLY SHALL BE PLACED ON CUSTOMER'S PROPERTY BEHIND THE METER BOX AND INSTALLED WITH A 120V GFCI RECEPTACLE.
5. ASSEMBLY SHALL BE ACCESSIBLE BY CITY INSPECTORS AND CERTIFIED TESTERS.
6. NO GALVANIZED OR PLASTIC PIPE OR FITTINGS.
7. TYPE-L HARD COPPER MUST BE INSTALLED FROM THE METER TO THE COPPER RISERS AND 5' FROM THE BACK SIDE, AND THE RISERS MUST HAVE UNIONS INSTALLED ON EACH SIDE.



ISOMETRIC VIEW OF TYPICAL ENCLOSURE



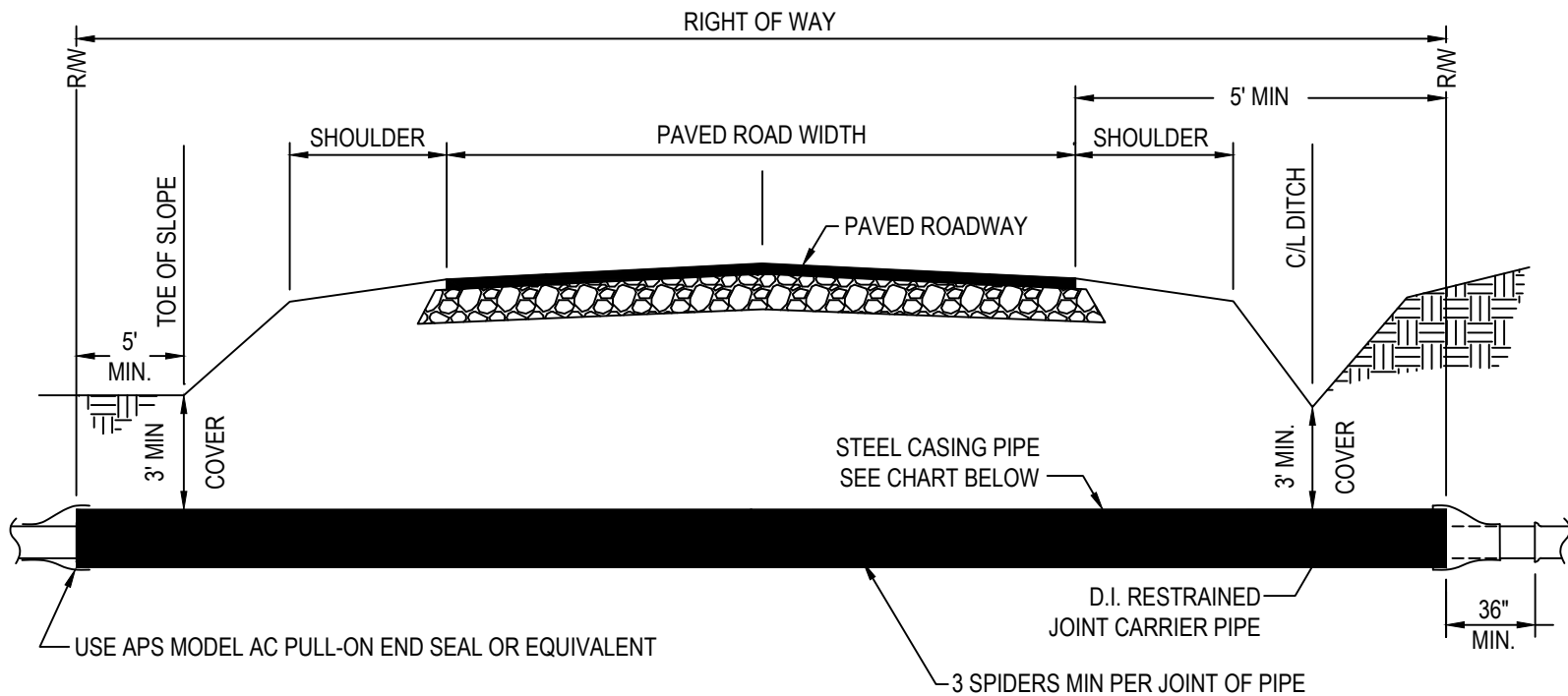
CITY OF STATESVILLE

PUBLIC WORKS DEPARTMENT

WATER LINE

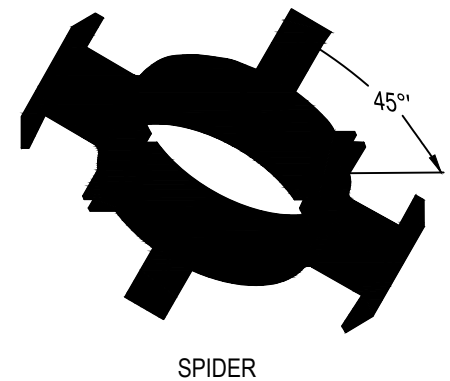
**2" DC Assembly
(Above Ground)**

DETAIL #	REVISED
W-12A	NOV 2019
SCALE:	SHEET #
N.T.S.	1 OF 1



OPTIONAL: COMPLETELY GROUT ENDS OF CASING PIPE.
ADD A WEEP HOLE ON LOW SIDE FOR DRAINAGE.

CARRIER PIPE		CASING PIPE			
		RAILROAD		HIGHWAY	
NOMINAL DIAMETER	OUTSIDE DIAMETER	OUTSIDE DIAMETER	WALL THICKNESS	OUTSIDE DIAMETER	WALL THICKNESS
6" & SMALLER	6.90"	12-3/4"	0.188"	12-3/4"	0.250"
8"	9.05"	16"	0.250"	16"	0.250"
10"	11.10"	20"	0.281"	20"	0.250"
12"	13.20"	24"	0.344"	24"	0.250"
14"	15.30"	28"	0.406"	28"	0.312"
16"	17.40"	30"	0.406"	30"	0.312"
20"	21.60"	42"	0.563"	42"	0.312"
24"	25.80"	42"	0.563"	42"	0.312"



NOTES:

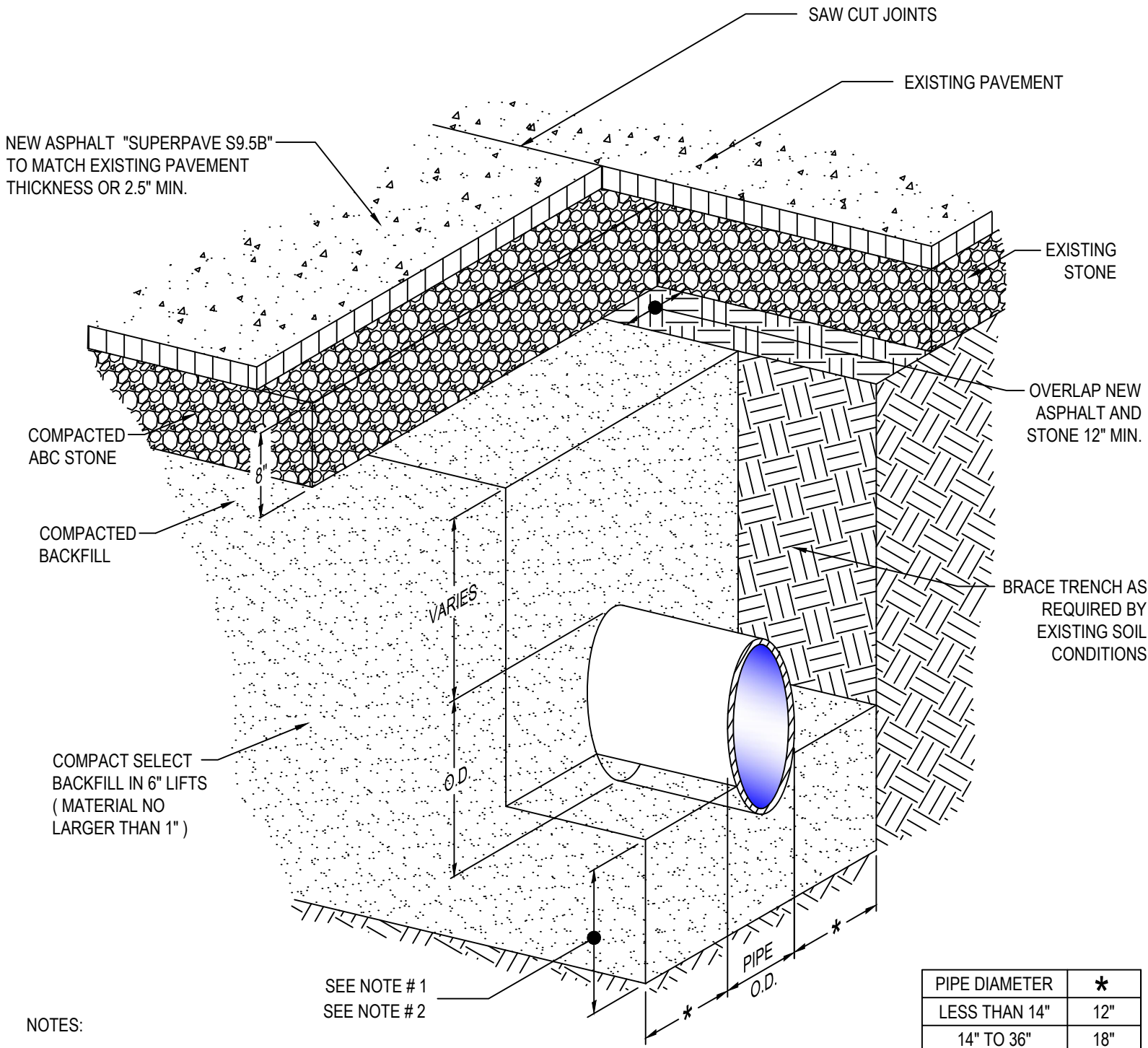
1. ALL ROAD CROSSINGS SHALL BE AS CLOSE TO PERPENDICULAR WITH THE ROADWAY AS POSSIBLE OR AS DIRECTED BY THE CITY ENGINEER.
2. ALL SEWER PIPE FROM MANHOLE TO MANHOLE AT HIGHWAY CROSSINGS SHALL BE DUCTILE IRON.
3. INSTALLATION OF CASING SHALL BE DRY BORE AND JACK.
4. STEEL CASING PIPE SHOULD BE GRADE B STEEL WITH A MINIMUM COMPRESSIVE STRENGTH OF 35,000 PSI IN ACCORDANCE WITH ASTM A139 AND A283.
5. CARRIER PIPE IS TO BE D.I.P. RESTRAINED JOINT.
6. GREASE ENCASEMENT AS REQUIRED FOR EASE OF INSTALLATION.
7. HOT DIP GALVANIZE ALL STEEL ASSEMBLY PARTS AFTER FABRICATION.
8. CADMIUM PLATE ALL NUTS & BOLTS.



CITY OF STATESVILLE
PUBLIC WORKS DEPARTMENT

WATER LINE
Bore Under Paved Roadways

DETAIL #	REVISED
W-13	SEP 2019
SCALE:	SHEET #
N.T.S.	1 OF 1



NOTES:

1. WHEN IN ROCK OR NON-CUSHIONING MATERIAL PLACE A BED OF # 57 STONE AT LEAST 8" THICK BELOW MIDPOINT OF PIPE FOR TRENCH DEPTH'S UP TO 16'. WHEN TRENCH IS GREATER THAN 16' DEEP PLACE AN ADDITIONAL 1" OF CUSHIONING STONE FOR EACH 2' OF DEPTH UP TO A MAXIMUM CUSHIONING DEPTH OF 12".
2. WHERE UNSUITABLE SOIL IS ENCOUNTERED, EXCAVATE THE SOIL AS DIRECTED BY THE ENGINEER AND BACKFILL WITH #57 STONE.
3. BACKFILL SHALL BE COMPACTED TO 95% STANDARD PROCTOR DENSITY.
4. WHEN WORKING WITHIN NCDOT RIGHT-OF-WAYS IT MAY BE REQUIRED TO ADD A ONE (1) INCH ASPHALT OVERLAY OVER AND AROUND THE CUT AREA.

PIPE DIAMETER	*
LESS THAN 14"	12"
14" TO 36"	18"
MORE THAN 24"	24"



CITY OF STATESVILLE

PUBLIC WORKS DEPARTMENT

WATER LINE

Trench, Bedding, & Backfill in Paved Roads

DETAIL #

W-14

REVISED

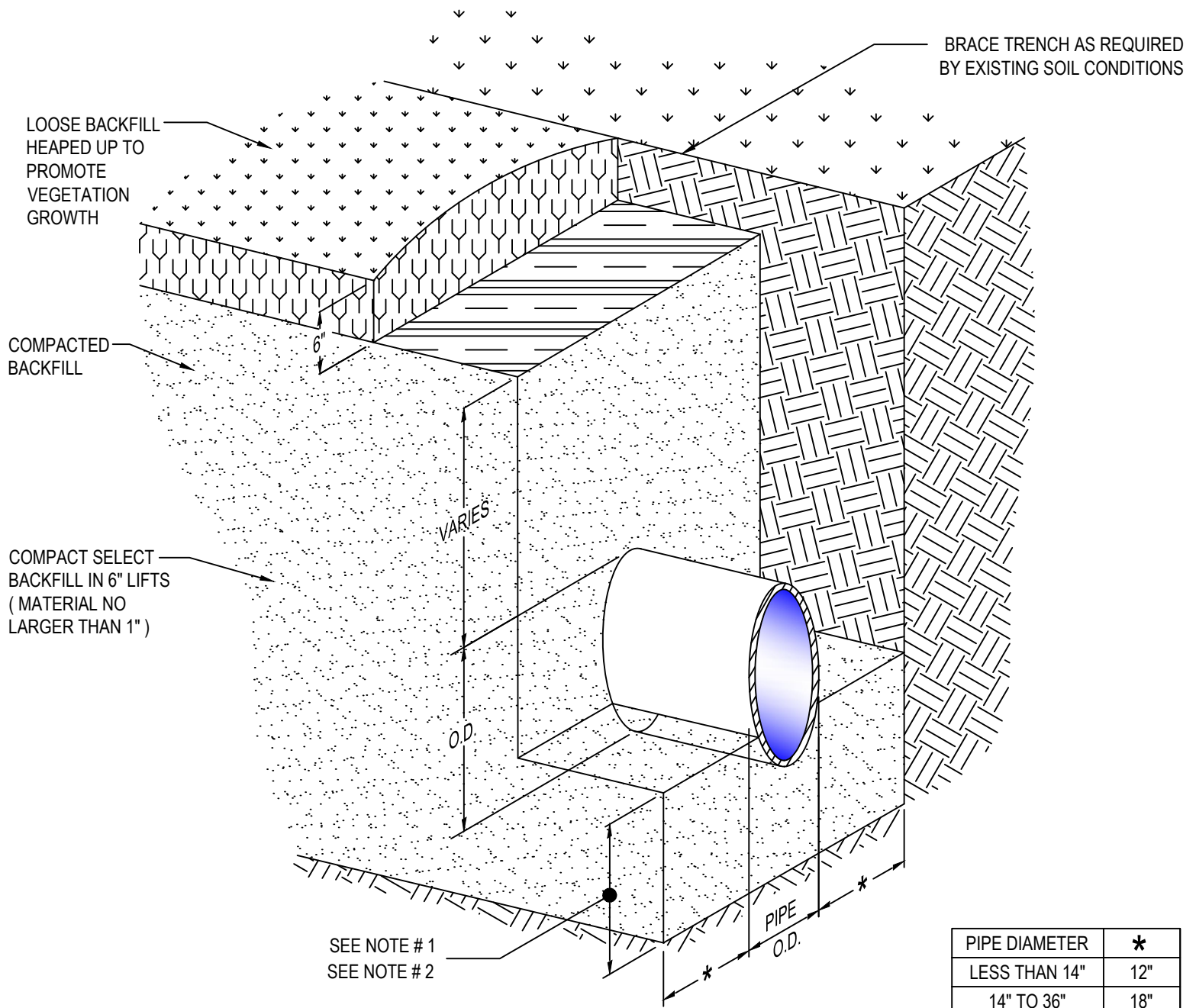
SEP 2019

SCALE:

N.T.S.

SHEET #

1 OF 1



SEE NOTE # 1
SEE NOTE # 2

PIPE DIAMETER	*
LESS THAN 14"	12"
14" TO 36"	18"
MORE THAN 24"	24"

NOTES:

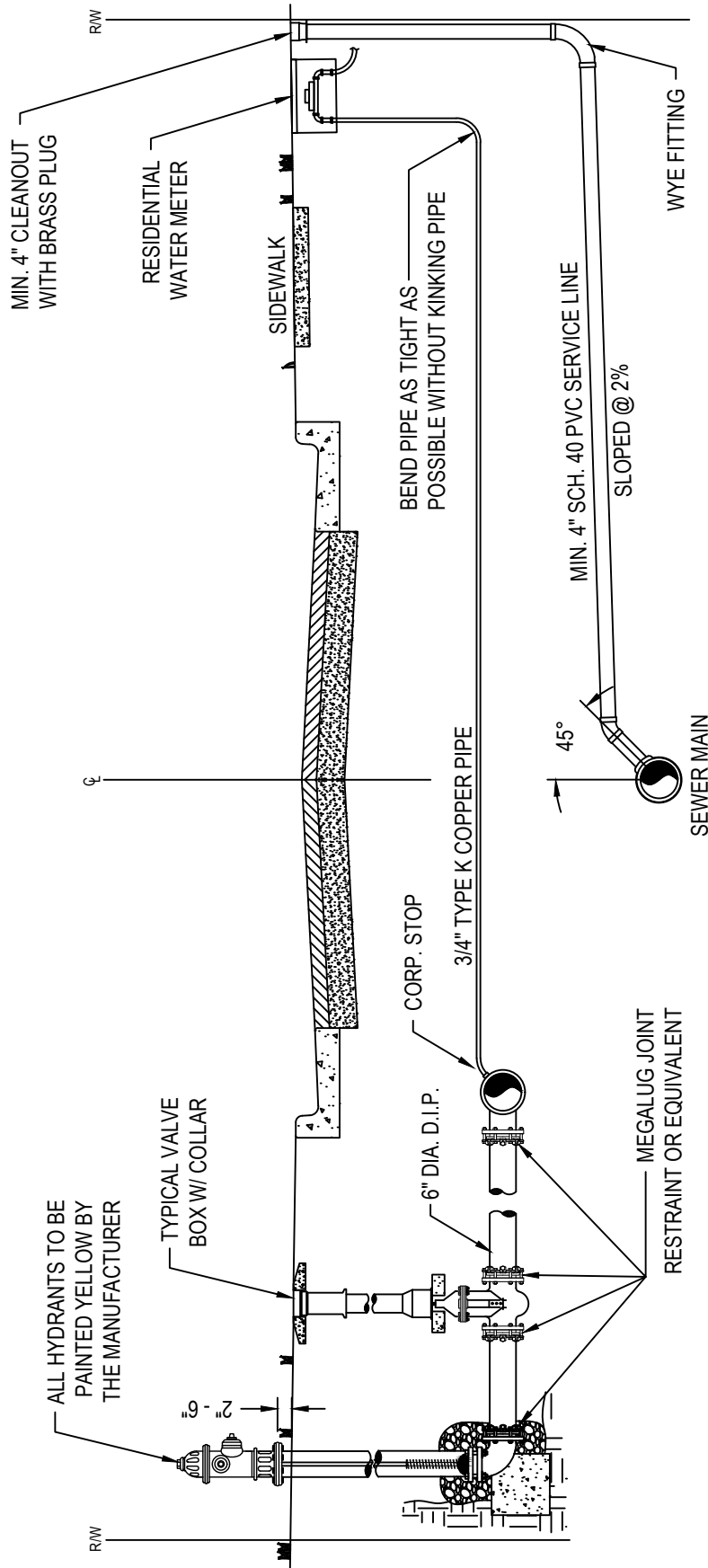
1. WHEN IN ROCK OR NON-CUSHIONING MATERIAL PLACE A BED OF # 57 STONE AT LEAST 8" THICK BELOW MIDPOINT OF PIPE FOR TRENCH DEPTHS UP TO 16'. WHEN TRENCH IS GREATER THAN 16' DEEP PLACE AN ADDITIONAL 1" OF CUSHIONING STONE FOR EACH 2' OF DEPTH UP TO A MAXIMUM CUSHIONING DEPTH OF 12".
2. WHERE UNSUITABLE SOIL IS ENCOUNTERED, EXCAVATE THE SOIL AS DIRECTED BY THE ENGINEER AND BACKFILL WITH #57 STONE.
3. BACKFILL SHALL BE COMPACTED TO 95% STANDARD PROCTOR DENSITY.



CITY OF STATESVILLE
PUBLIC WORKS DEPARTMENT

WATER LINE
**Trench, Bedding, &
Backfill Off Road**

DETAIL #	REVISED
W-15	SEP 2019
SCALE:	SHEET #
N.T.S.	1 OF 1



NOTE:

1. CONTRACTOR SHALL NOT INSTALL HYDRANTS IN RADIUS OF CURB AND GUTTER. MAINTAIN MIN. SEPARATION OF 1'-6" BETWEEN HYDRANTS AND BACK OF CURB, SIDEWALKS, AND OTHER CONSTRUCTED PATHWAYS.
- 2.



CITY OF STATESVILLE

PUBLIC WORKS DEPARTMENT

WATER LINE

Utilitys in R/W

DETAIL #

W-16

REVISED

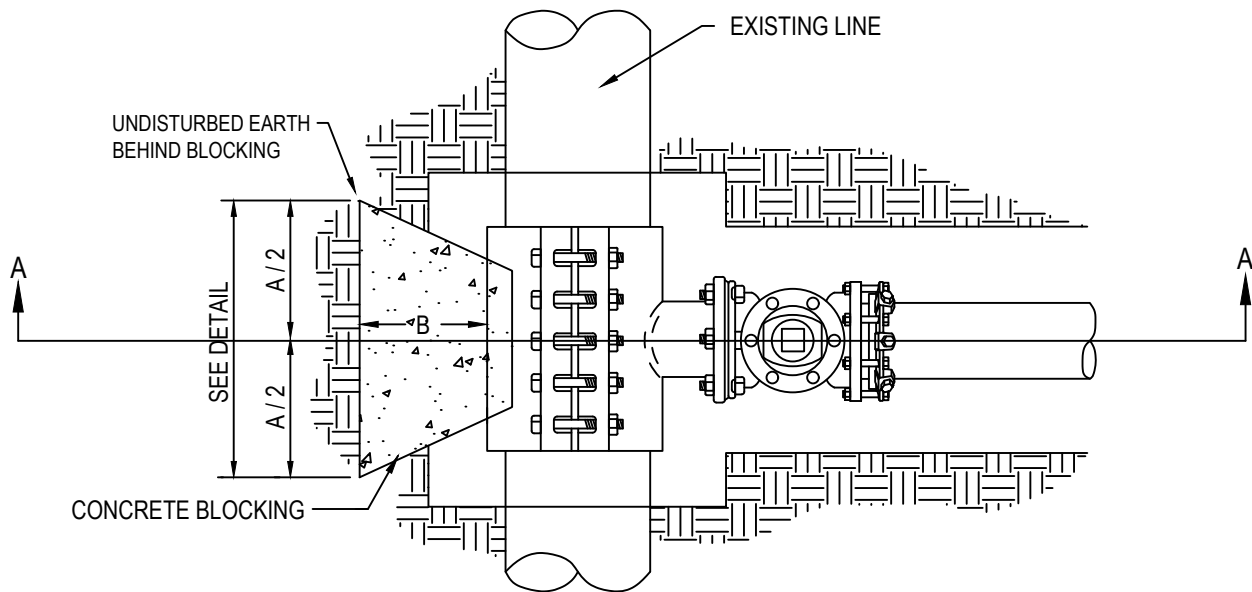
MAY 2019

SCALE:

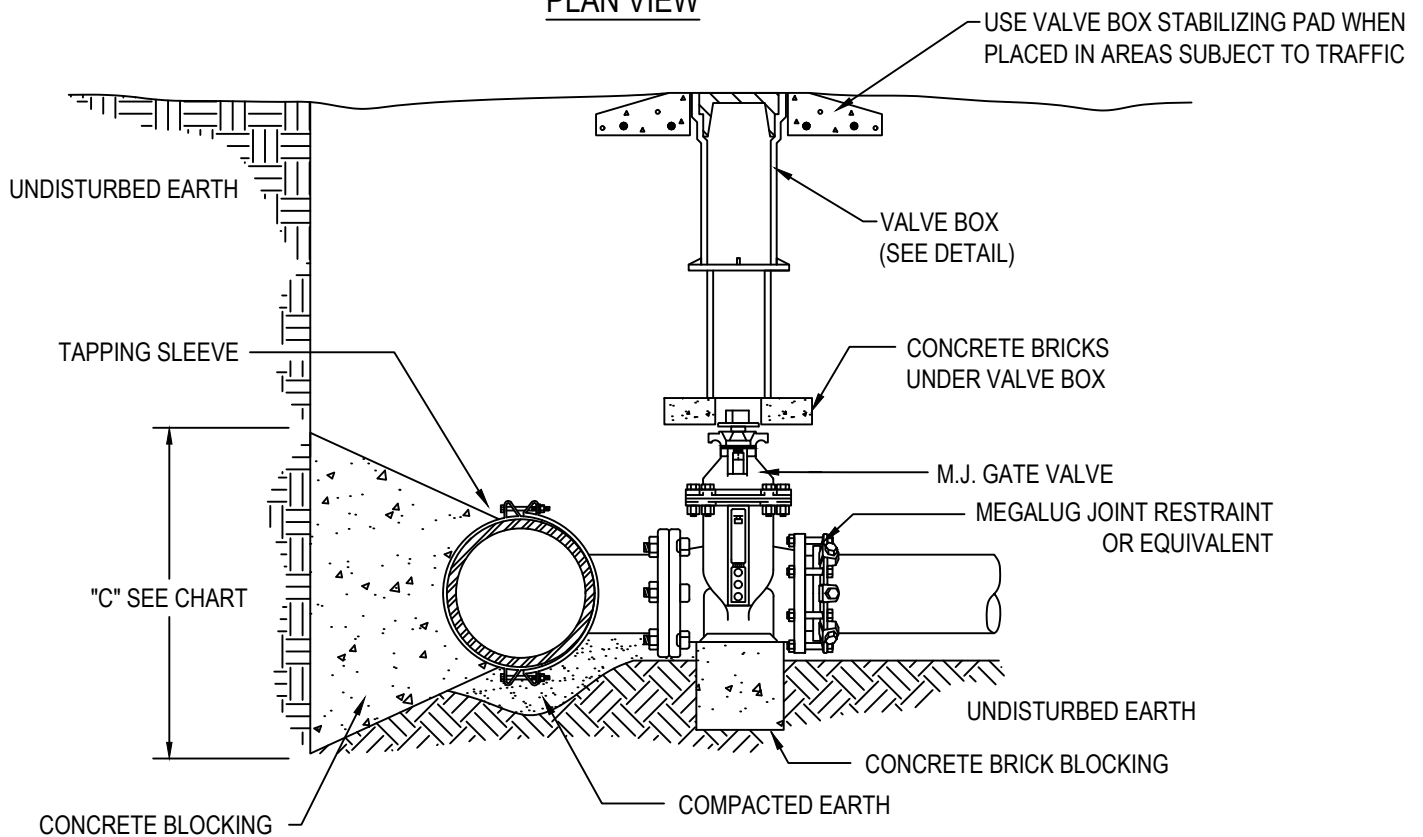
N.T.S.

SHEET #

1 OF 1



PLAN VIEW



SECTION A-A

NOTES:

1. THE GATE VALVE SHALL OPEN TO THE RIGHT.
2. USE FULL BODY TAPPING SLEEVE WITH GASKET AND MECHANICAL JOINT OUTLET.
3. CONCRETE BLOCKING IS TO BE FORMED TO ENSURE ACCESSIBILITY TO FITTINGS AND POURED AGAINST UNDISTURBED EARTH.
4. FITTINGS ARE TO BE COMPLETELY WRAPPED WITH PLASTIC, PRIOR TO POURING CONCRETE.
5. CONCRETE TO BE MINIMUM 3,000 PSI. @ 28 DAYS.



CITY OF STATESVILLE

PUBLIC WORKS DEPARTMENT

WATER LINE

Tapping Sleeve

DETAIL #

W-17

REVISED

-

SCALE:

N.T.S.

SHEET #

1 OF 1

CONSTRUCTION NOTES:

1. ALL WORK SHALL BE COORDINATED WITH THE CITY OF STATESVILLE, THE DESIGN ENGINEER, THE N.C. DEPARTMENT OF TRANSPORTATION, ALL GAS, TELEPHONE, & POWER UTILITIES, AND ANY OTHERS AS REQUIRED.
2. ALL WATER LINES INSTALLED ON SECONDARY ROADS SHALL BE ACCORDING TO THE NCDOT "POLICIES AND PROCEDURES FOR ACCOMMODATING UTILITIES ON HIGHWAY RIGHT-OF-WAYS" MANUAL.
3. TAKE PROPER PRECAUTIONS NOT TO DISTURB EXISTING PROPERTY CORNERS. ANY NECESSARY REMOVAL AND RESETTING OF PROPERTY IRONS SHALL BE DONE BY A REGISTER LAND SURVEYOR.
4. FENCES DAMAGED DURING CONSTRUCTION MUST BE REPLACED. USE TEMPORARY FENCING TO PREVENT ESCAPE OF LIVESTOCK.
5. ALL RIGHT-OF-WAYS SHALL BE GRADED, SHAPED, SEEDED AND STABILIZED AFTER CONSTRUCTION IS COMPLETE.
6. ALL RIGHT-OF-WAYS SHALL BE GRADED IN A MANNER AS TO NOT ALLOW ANY STANDING WATER.
7. ANY EXCAVATED WOOD, ROCKS, AND/OR DEBRIS SHALL BE DISPOSED OF OFF SITE BY THE CONTRACTOR. NO ONSITE BURYING WILL BE ALLOWED.
8. ANY TREES SCARRED DURING CONSTRUCTION SHALL HAVE THE SCARS TRIMMED AND PAINTED WITH ASPHALT-BASE TREE PAINT.
11. PLUG ALL PIPE OPENINGS AND FILL ANY EXPOSED TRENCHES AT THE END OF THE DAY.
12. DO NOT TIE NEW WATER LINES INTO EXISTING WATER LINES UNTIL AUTHORIZED BY LOCAL AND STATE AUTHORITIES.
13. THE USE AND STORAGE OF EXPLOSIVES SHALL CONFORM TO LOCAL, STATE, AND FEDERAL LAWS.
14. COSTS OF CONCRETE COLLARS AND PLUGS SHALL BE INCLUDED IN THE UNIT PRICE OF PIPE UNLESS OTHERWISE NOTED IN THE PROPOSAL.
15. COSTS OF ADAPTERS, ETC REQUIRED FOR CONNECTIONS OF PVC, C.I., AND D.I. PIPE SHALL BE INCLUDED IN THE UNIT PRICE OF PIPE.
16. ALL FENCES CROSSED DURING CONSTRUCTION SHALL BE REPLACED WITH FENCE OF LIKE MATERIAL. INCLUDE A NEW 10' OR WIDER GATE OF LIKE MATERIAL AT EACH FENCE CROSSING FOR ACCESS. COST OF REPLACING FENCES AND PROVIDING GATES SHALL BE INCLUDED IN UNIT PRICE BID PER LINEAR FOOT OF PIPE.
17. ANY PIPES WHICH MUST BE INSTALLED INSIDE A DITCH OR AT A CREEK CROSSING TO ALLOW ACCESS DURING CONSTRUCTION SHALL BE REMOVED ONCE CONSTRUCTION IS COMPLETE UNLESS OTHERWISE SPECIFIED. SAID PIPE SHALL BE NO LESS THAT 12" DIAMETER UNLESS OTHERWISE DETERMINED BY THE DESIGN ENGINEER.. COST FOR INSTALLING THIS PIPE SHALL BE INCLUDED IN THE UNIT PRICE BID PER LINEAR FOOT OF PIPE.

EROSION CONTROL NOTES

1. ALL SITES ARE SUBJECT TO INSPECTION FOR EROSION CONTROL.
2. ANY LAND DISTURBING ACTIVITIES OF 1 ACRE OR MORE (1/2 ACRE WITHIN A PROTECTED WATERSHED AREA) SHALL REQUIRE A LAND DISTURBING PERMIT FROM THE IREDELL COUNTY PLANNING DEPARTMENT.
3. IT IS THE CONTRACTORS RESPONSIBILITY TO MONITOR AND MAINTAIN ALL EROSION CONTROL PRACTICES IN AND AROUND THE SITE.
4. AS PER N.C.G.S. 113A.-57(2)...IN ANY EVENT, SLOPES LEFT EXPOSED WILL, WITHIN 21 CALENDAR DAYS OF COMPLETION OF ANY PHASE OF GRADING, BE PLANTED OR OTHERWISE PROVIDED WITH TEMPORARY OR PERMANENT GROUND COVER, DEVICES, OR STRUCTURES SUFFICIENT TO RESTRAIN EROSION.
5. PURSUANT TO N.C.G.S. 113A.-57(3)...PROVISIONS FOR A GROUND COVER SUFFICIENT TO RESTRAIN EROSION MUST BE ACCOMPLISHED WITHIN 15 WORKING DAYS OR 90 CALENDAR DAYS FOLLOWING COMPLETION OF CONSTRUCTION OR DEVELOPMENT, WHICHEVER IS SHORTER, EXCEPT AS PROVIDED IN 15A NCAC 4B .0124(e).
6. ADDITIONAL EROSION CONTROL MEASURES NOT SHOWN ON PLANS MAY BE REQUIRED IF STABILIZATION IS NOT ACHIEVED WITHIN SPECIFIED TIME LIMITS OR IF UNDUE SEDIMENTATION OCCURS.



CITY OF STATESVILLE

PUBLIC WORKS DEPARTMENT

WATER LINE

General Notes

DETAIL # **REVISED**

W-18 MAY 2010

SCALE: **SHEET #**

N.T.S. 1 OF 1